



83F TITWOOD ROAD

SHAWLANDS

www.corumproperty.co.uk



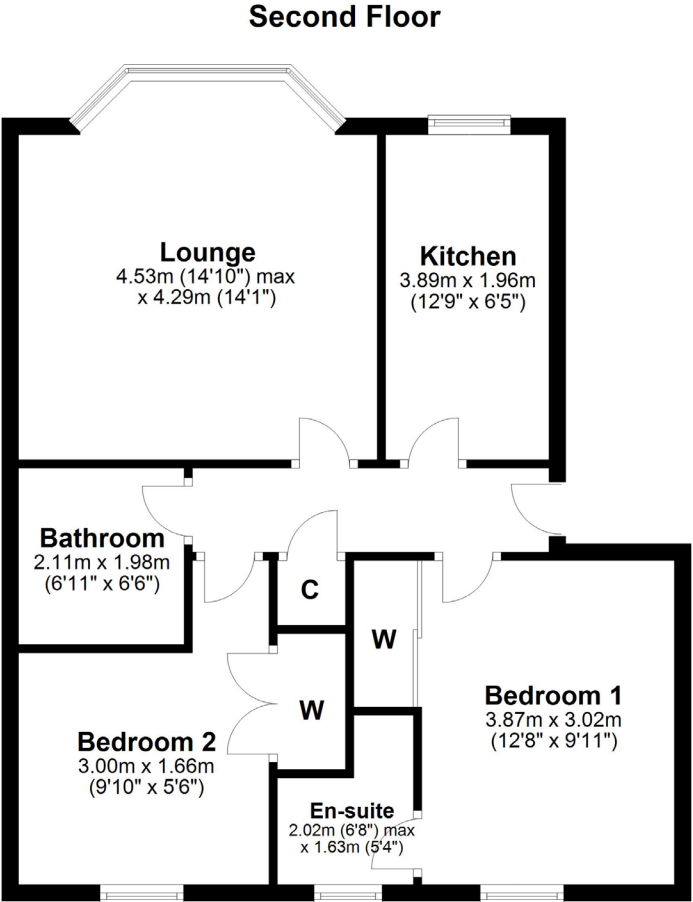
2 | BEDROOMS
2 | BATHROOMS
1 | PUBLIC ROOM

This bright second floor modern flat is presented in superb order and is nearby the numerous amenities of Shawlands and Strathbungo.

- Popular Cala Homes development
- Two double bedrooms
- Bathroom and en-suite
- Wonderful fitted storage
- Residents parking to rear
- Thriving amenities nearby

Amenities

83F Titwood Road is within walking distance of a diverse range of independent coffee shops, restaurants, bars and bakeries in Shawlands or Strathbungo. Queens Park is only 500 yards from the front door delivering a reptile house, green space, football pitches and tennis courts. Crossmyloof train station is also only 500 yards away connecting to Glasgow Central Station.



Sat Nav:
83F Titwood Road, Shawlands, G41 2DG

SS4113

*All measurements and distances are approximate.
Floorplans are for illustration purposes and may not be to scale.

For the full home report visit
www.corumproperty.co.uk



WE'RE **SOLD** ON
YOUR FUTURE



Corum Shawlands
247 Kilmarnock Road, Shawlands, G41 3JF

Tel: 0141 636 7588

Email: shawlands@corumproperty.co.uk

www.corumproperty.co.uk