



134 WELBECK CRESCENT

TROON

www.corumproperty.co.uk



c o r u m



2 | BEDROOMS

2 | BATHROOMS

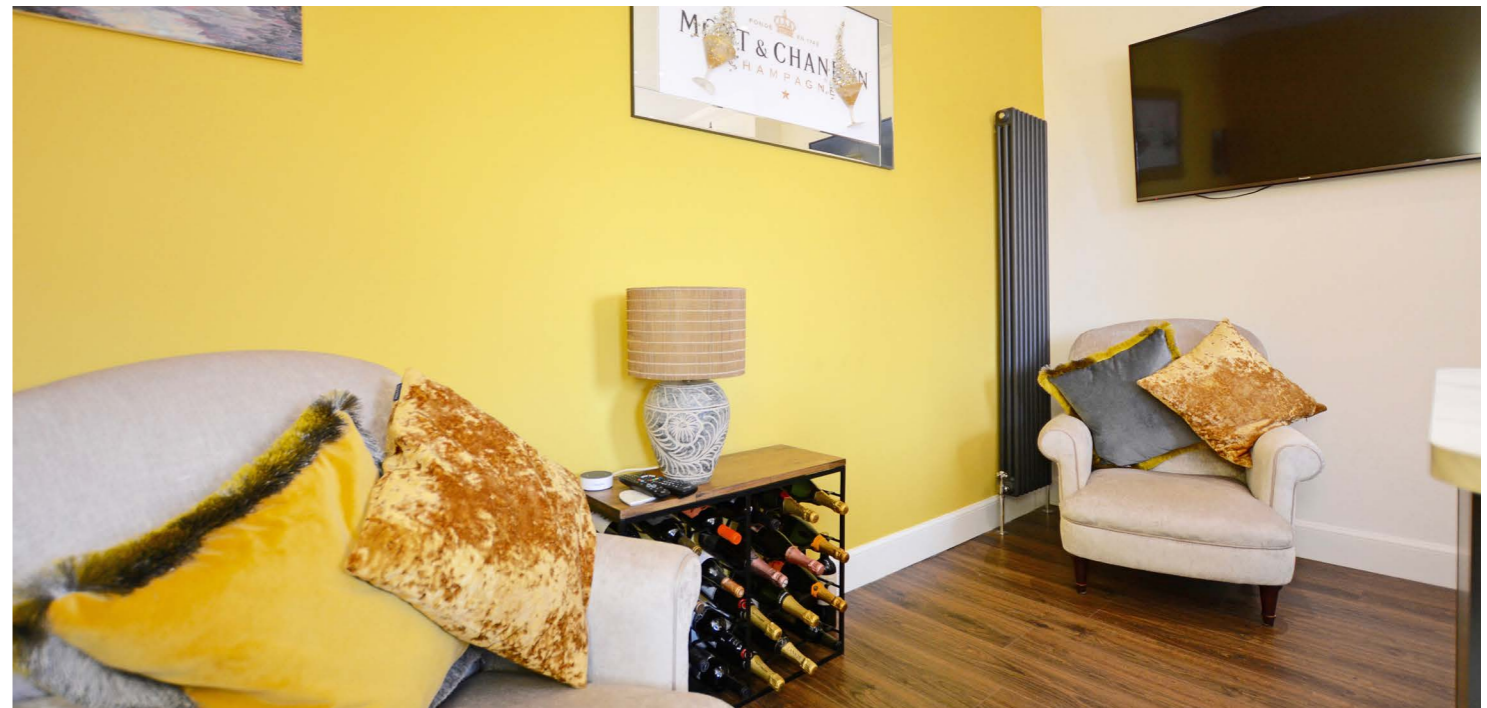
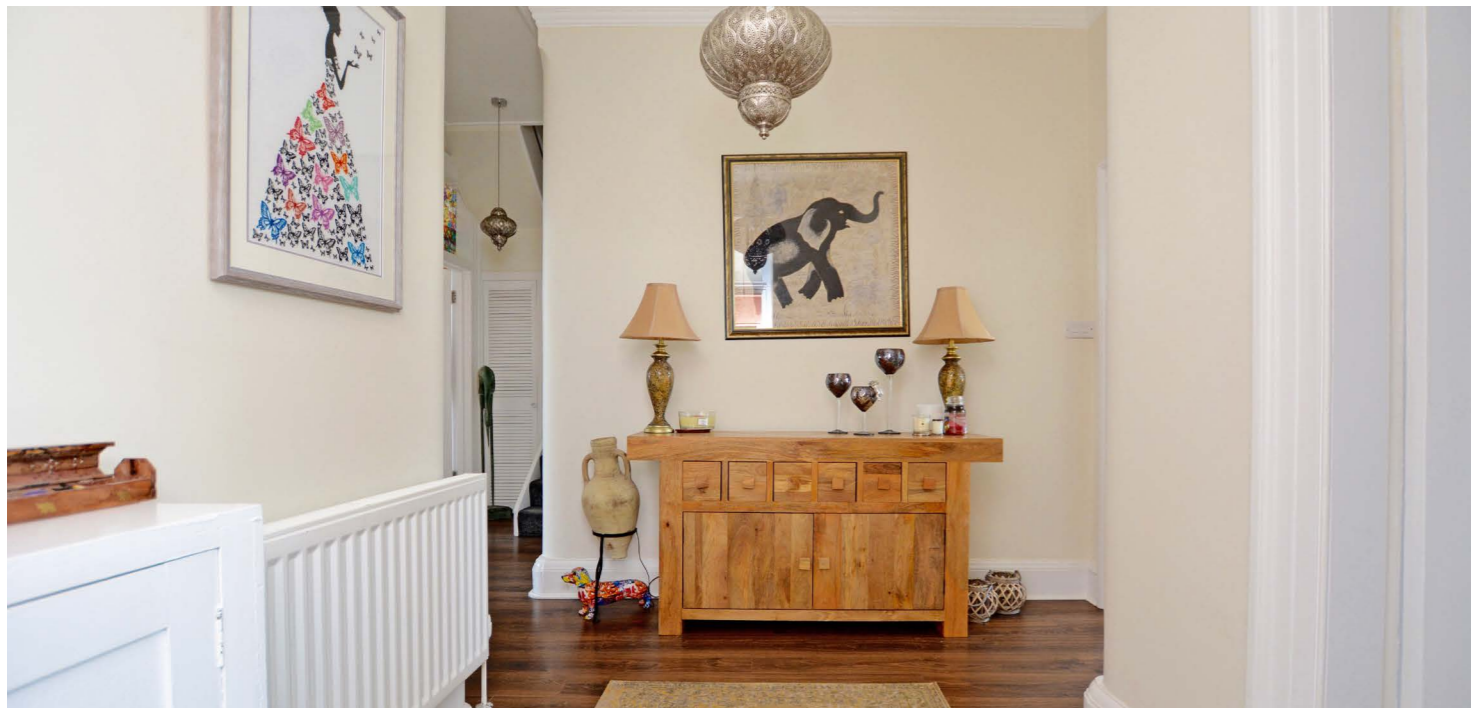
2 | PUBLIC ROOMS

An immaculate traditional upper conversion arranged over two levels and presented in very good decorative order with partial sea-view from the lounge and private rear garden.

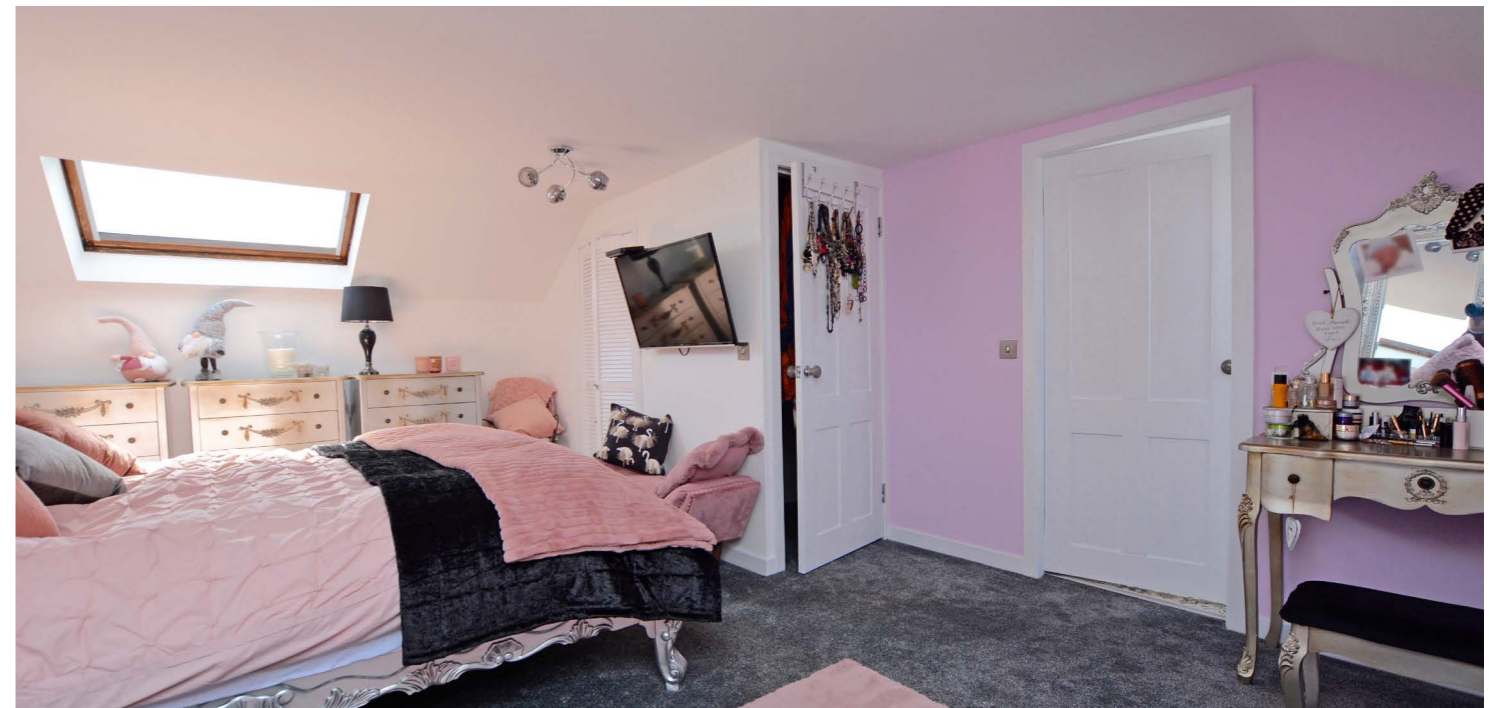
Number 134 is a beautifully presented traditional upper conversion which provides deceptively spacious accommodation over two levels with well proportioned apartments throughout. The property includes a modern fitted dining kitchen with centre island, quality sanitary ware, cornice work, double glazing, gas central heating and generous cupboard space.

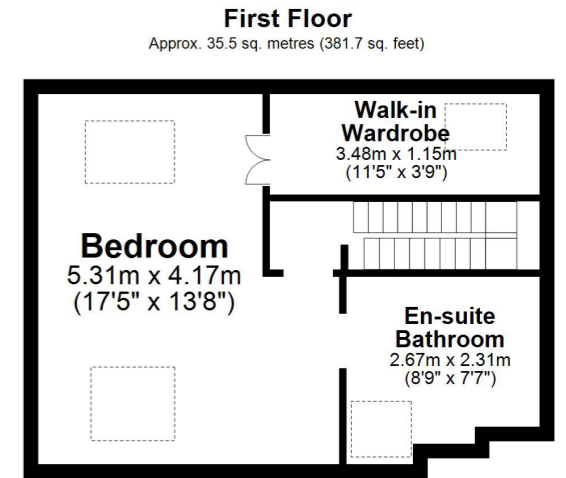
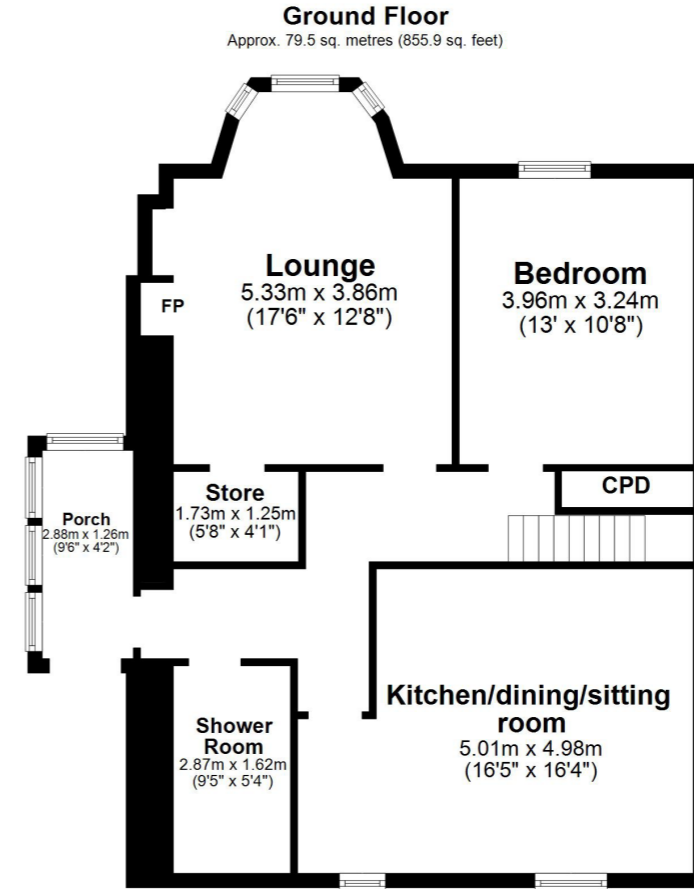
In summary the accommodation the accommodation extends to, on the first floor an entrance porch, welcoming reception hallway, front facing bay windowed lounge with partial sea-view, dining sized kitchen with sitting area, double bedroom and three piece shower room. On the second floor there is a further double bedroom with three piece en-suite bathroom and walk in wardrobe off.

Externally the enclosed garden is laid to artificial lawn with surrounding decorative chips. In addition there is an external store and communal drying area.









Welbeck Crescent is a popular residential address running from the centre of Troon to the seafront. Number is located at the far end around 50 yards from the seafront which offers lovely walks with the Isle of Arran providing an impressive back-drop. The town centre is within close proximity and provides a comprehensive range of amenities.

TR1520 | Sat Nav: 134 Welbeck Crescent, Troon, KA10 6AW

For the full home report visit www.corumproperty.co.uk

* All measurements and distances are approximate Floorplans are for illustration purposes and may not be to scale.



WE'RE **SOLD** ON
YOUR FUTURE



Corum Troon
29 Portland Street, Troon, KA10 6AA

Tel: 01292 310 010
Email: troon@corumproperty.co.uk

www.corumproperty.co.uk