



**EASTWOOD**

22 LONGHILL AVENUE, ALLOWAY

[www.corumproperty.co.uk](http://www.corumproperty.co.uk)





**4 | BEDROOMS**

**2 | BATHROOMS**

**2 | PUBLIC ROOMS**

**An impressive detached family home set on a substantial plot, with accommodation extending across six main apartments and situated within the highly regarded Alloway Primary School catchment area.**

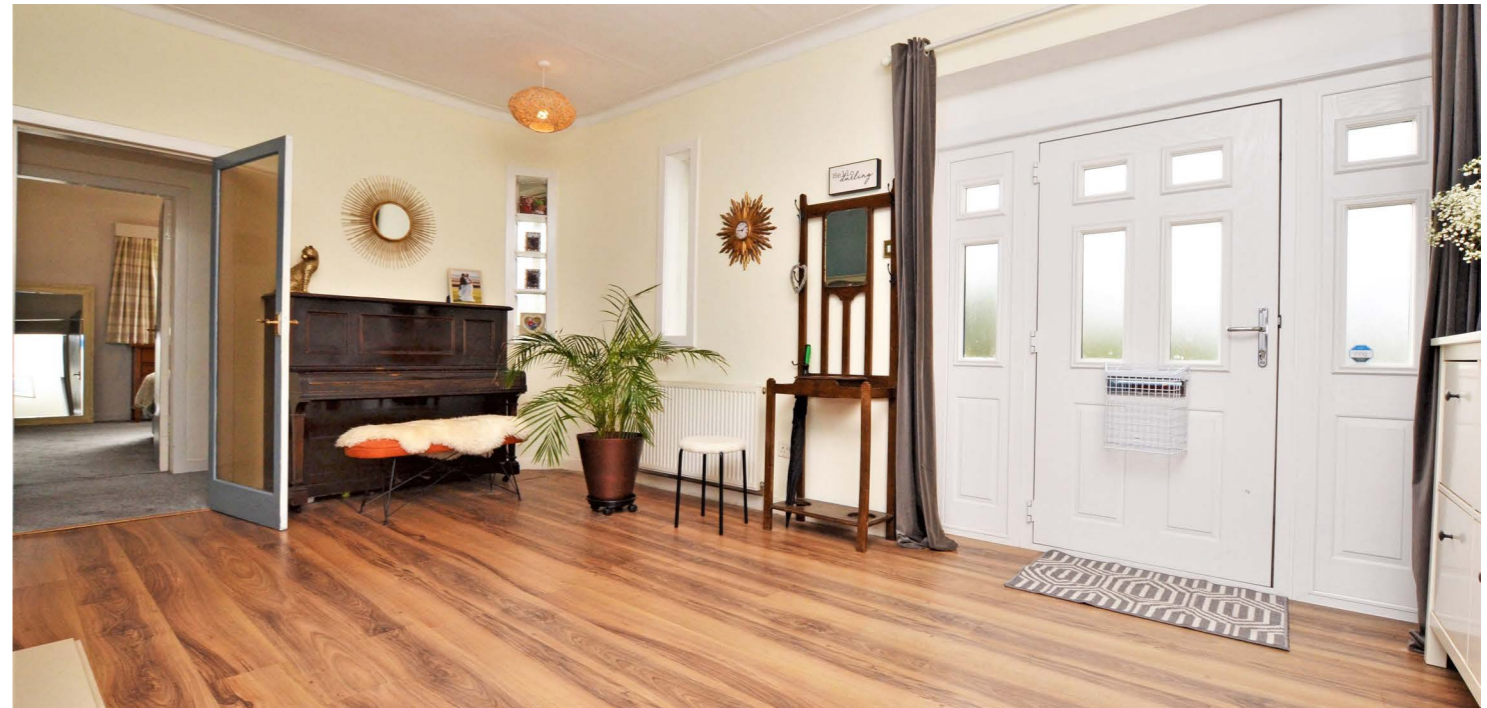
Longhill Avenue is a popular address linking the historic village of Alloway with Doonfoot and consisting predominantly of executive detached villas that are within the catchment of the renowned Alloway Primary School. 'Eastwood' is set in lovely mature gardens that are surrounded by mature woodland, which affords the property a high degree of privacy and access into woodland walks via a gate to the rear. This fantastic detached family home has a wealth of flexible accommodation across six main apartments over two floors, with the addition of master en suite shower room, a large reception hallway, a luxury downstairs shower room suite and ample storage throughout.

In more detail, the internal accommodation extends to a large reception hallway with a feature fireplace, a spacious lounge with a wood-burning stove, a large fitted kitchen with a central island and open plan into a dining room with a door to the rear garden, an inner hallway with a walk-in store, a downstairs luxury shower room suite and three large double bedrooms. On the upper floor there are three storage cupboards off the landing and a large master bedroom suite, with fitted storage, Velux windows and an en suite shower room. There is also an attached brick store/ workshop at the rear.

The extensive rear gardens are mostly laid to lawn and are sheltered by mature woodland, which offers a high degree of privacy and has pathways that give access to the river Doon. There is a large decked patio area, decorative shrubs and gated access to the front. The front garden has a horseshoe drive, laid with decorative aggregate, and a well-tended lawn.







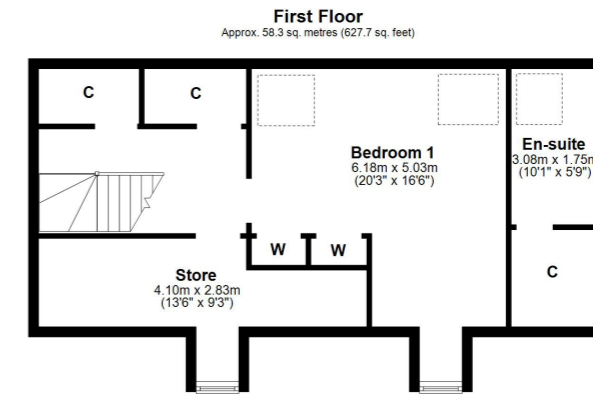
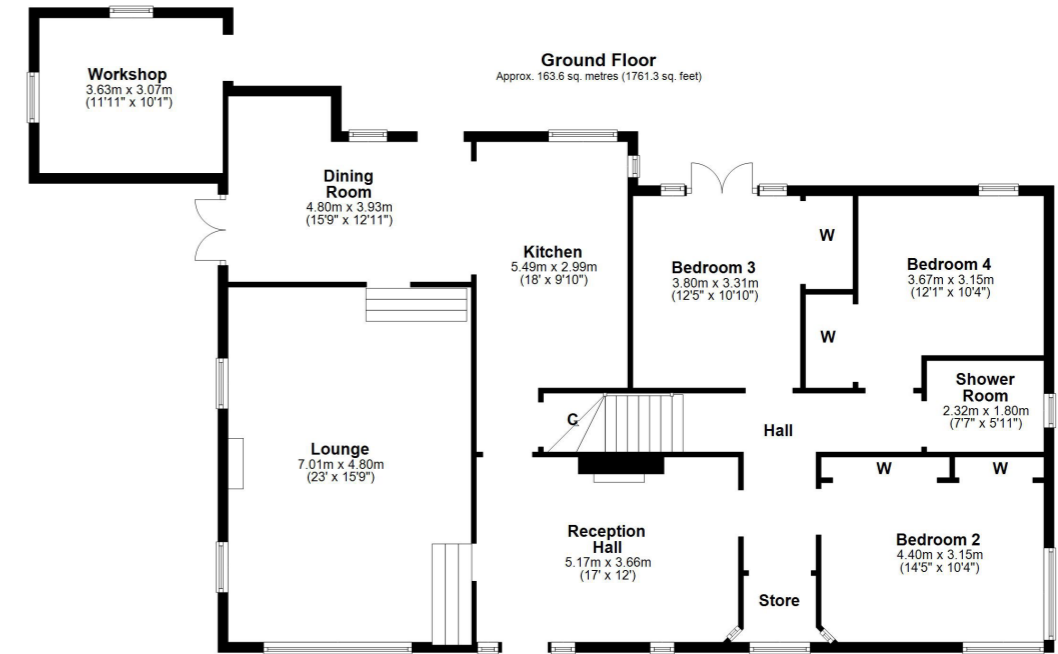












From Ayr proceed south on Carrick Road. Continue into Monument Road. On reaching Alloway continue through the village and pass Brig O Doon Hotel. Turn next right into Longhill Avenue and number 22 can be found on the right hand side.

AY4084 | Sat Nav: 22 Longhill Avenue, Alloway, KA7 4DY

For the full home report visit [www.corumproperty.co.uk](http://www.corumproperty.co.uk)

\* All measurements and distances are approximate Floorplans are for illustration purposes and may not be to scale.



WE'RE **SOLD** ON  
YOUR FUTURE



Corum Ayr  
14 Beresford Terrace, Ayr, KA7 2EG

**Tel:** 01292 880 888

**Email:** [ayr@corumproperty.co.uk](mailto:ayr@corumproperty.co.uk)

[www.corumproperty.co.uk](http://www.corumproperty.co.uk)