



11/2 WHISTLEFIELD COURT

BEARSDEN

www.corumproperty.co.uk





3 | BEDROOMS
2 | BATHROOMS
2 | PUBLIC ROOMS

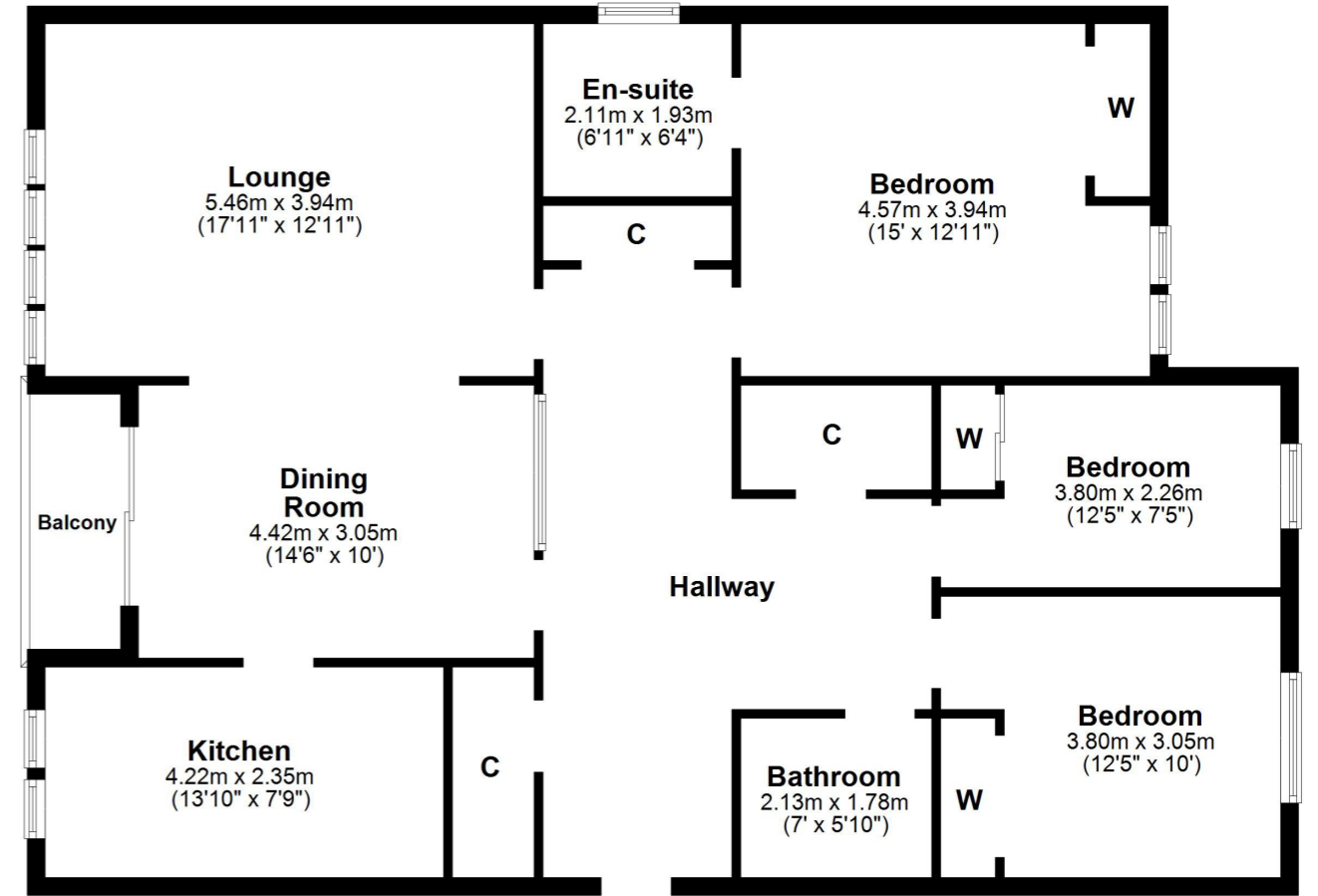
Situated in the highly desirable Whistlefield Court development, is a three bedroom apartment, in need of a degree of modernisation with private lock up and will sure to be popular amongst a wide range of buyers. Whistlefield court, is a small private development of luxury flats and a few townhouses built by Bovis in the early 1970's. The estate with its private grounds lead down to the southerly shore of St Germain's Loch and provides a lovely woodland retreat for the residents.

Accessed via a secure entry and situated on the first floor the accommodation comprises; large reception hall with three storage cupboards off, semi open plan lounge/ dining room, galley style kitchen and South facing balcony. To the rear, there are three bedrooms, the principle benefiting from an en-suite bathroom and finally there is a family bathroom off the hall.

In addition, there is residents' parking, double glazing and electric heating.

Please note: This is an Executry Sale and no warranties will be given regarding fixtures and services.





The suburb of Bearsden is one of Glasgow's most desired districts in which to reside. There are numerous highly acclaimed educational facilities at both Primary and Secondary levels and leisure facilities are plentiful with a choice of private and state gyms and clubs in abundance. Locally, there is an excellent selection of shops and services at Bearsden Cross along with restaurants, cafes and bars. There are excellent bus links nearby and train stations can be found at Hillfoot, Westerton and Bearsden providing regular services into Glasgow's West End and City Centre, including a service to Edinburgh. Glasgow Airport can be reached within twenty-five minutes off peak and, to the north of Bearsden is the world renowned Loch Lomond and The Trossachs National Park.

BD3406 | Sat Nav: Whistlefield Court, Bearsden, G61 1PX

For the full home report visit www.corumproperty.co.uk

* All measurements and distances are approximate Floorplans are for illustration purposes and may not be to scale.



WE'RE **SOLD** ON
YOUR FUTURE



Corum Bearsden
4 Canniesburn Toll, Bearsden, G61 2QU

Tel: 0141 942 5888

Email: sales@corumproperty.co.uk

www.corumproperty.co.uk