



15 EDMONT STREET

SHAWLANDS

www.corumproperty.co.uk



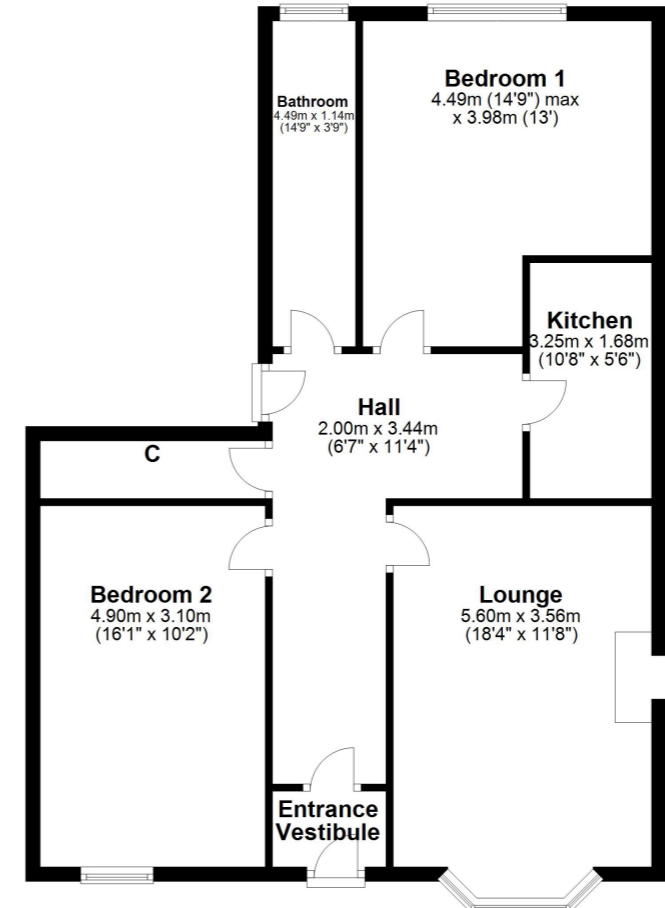
2 | BEDROOMS
1 | BATHROOM
1 | PUBLIC ROOM

A beautiful main door two bedroom flat situated in a highly popular address.

- Main Door
- Bay Window Lounge
- Two Double Bedrooms
- Modern Fitted Kitchen
- Large Dining Hall
- Bathroom
- Private South Facing Front Garden
- Communal Rear Garden

Amenities

Edgemont Street is a short walk from a wide range of local shops and amenities in Shawlands where popular restaurants, bars and delicatessens can be found. More extensive facilities are available at the Morrison store at Crossmyloof or Newlands, the Marks & Spencer store on Pollokshaws Road or the Silverburn shopping Centre at Pollok. The hugely popular Queen's Park is just around the corner where nature walks, football pitches, tennis courts and a fortnightly farmers market can be found.



Sat Nav:
15 Edgemont Street, Shawlands, G41 3EH

SS3785

*All measurements and distances are approximate.
Floorplans are for illustration purposes and may not be to scale.

For the full home report visit
www.corumproperty.co.uk



WE'RE **SOLD** ON
YOUR FUTURE



Corum Shawlands
247 Kilmarnock Road, Shawlands, G41 3JF

Tel: 0141 636 7588

Email: shawlands@corumproperty.co.uk

www.corumproperty.co.uk