



**1/2, 11 MILLWOOD STREET**

SHAWLANDS

[www.corumproperty.co.uk](http://www.corumproperty.co.uk)

  
C O R U M

1 | BEDROOM  
1 | BATHROOM  
1 | PUBLIC ROOM

An immaculate first floor flat presented in truly turnkey order.

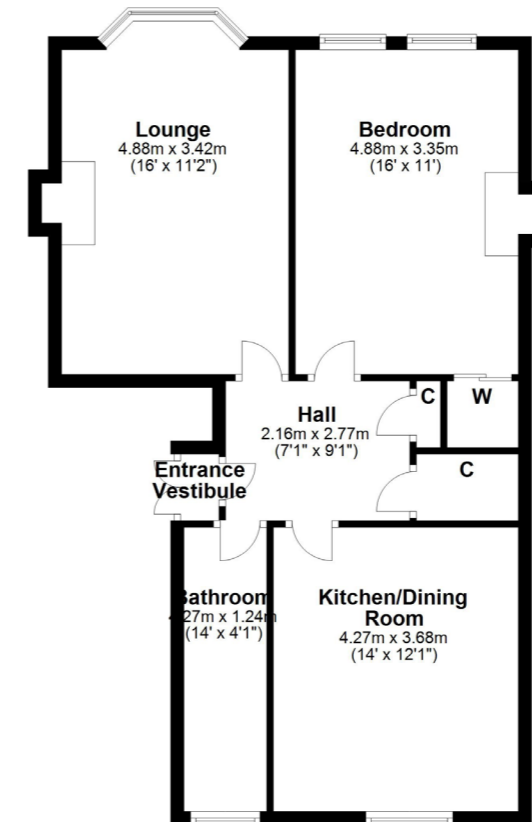
- Entrance vestibule, hallway
- Particularly bright main bay lounge overlooking quiet street setting
- Sizeable double bedroom
- Modern fitted kitchen and bathroom
- Gas central heating, double glazed & secure door entry
- Almost new condition!

**Amenities**

The property is located a stones throw from the Deanston Bakery (approx. 200 yards). Given the location on Millwood Street, the property is ideally positioned within walking distance of a broad range of amenities on Kilmarnock Road in Shawlands where coffee shops, bars, restaurants and delicatessens are found. More extensive amenities are available at the Marks and Spencer's store at Queens Park or Morrisons' store at Newlands, the Tesco store on Kilmarnock Road or the Silverburn Shopping Centre at Pollok, a short drive to the West.

The area is well served by way of recreational pursuits notably at Queens Park with nature walks, football pitches, tennis courts and a fortnightly farmers market.

Transport links are in close proximity with the local railway station approximately 300 yards walk and regular bus services on Kilmarnock Road.



Sat Nav:  
11 Millwood St, Shawlands, G41 3JY

SS4134

\*All measurements and distances are approximate.  
Floorplans are for illustration purposes and may not be to scale.

For the full home report visit  
[www.corumproperty.co.uk](http://www.corumproperty.co.uk)



WE'RE **SOLD** ON  
YOUR FUTURE



Corum Shawlands  
247 Kilmarnock Road, Shawlands, G41 3JF

**Tel:** 0141 636 7588

**Email:** [shawlands@corumproperty.co.uk](mailto:shawlands@corumproperty.co.uk)

[www.corumproperty.co.uk](http://www.corumproperty.co.uk)