



GARDEN FLAT, 20 MARYWOOD SQUARE

STRATHBUNGO

www.corumproperty.co.uk



C O R U M

2 | BEDROOMS

1 | BATHROOM

1 | PUBLIC ROOM

A superb and recently modernised garden conversion of a townhouse, set within the heart of the thriving Strathbungo community.

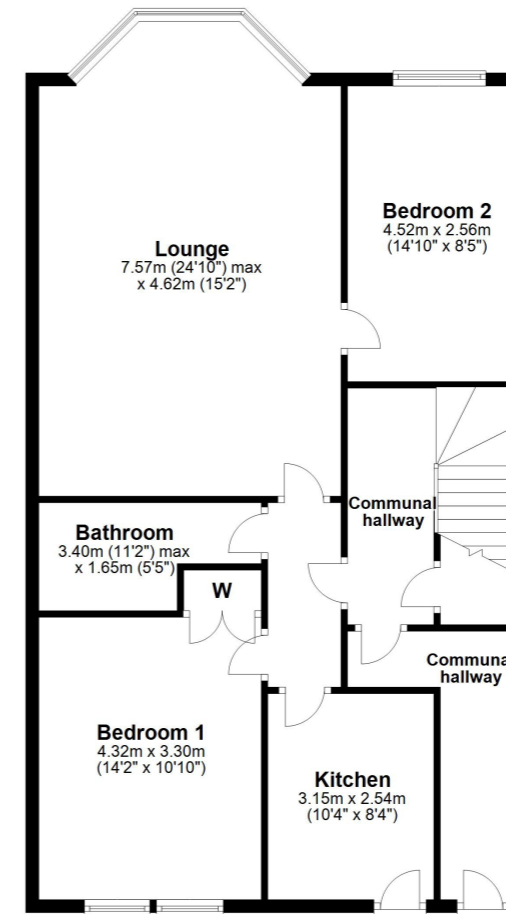
- Residents vestibule and lobby
- Entrance hallway, superb bay windowed lounge
- 2 double bedrooms (master with inbuilt wardrobe)
- Modern fitted kitchen with direct access to gardens
- Beautifully appointed shower-room
- Private front garden, shared rear garden, parking

Amenities

The property is positioned within walking distance of shops and amenities upon Pollokshaws Road and within central Strathbungo where thriving coffee shops, restaurants and delicatessens can be found at the Marks and Spencer's store at Queens Park, Sainsbury's Local on Darnley Road, the Morrisons store at Crossmyloof, Newlands or Giffnock, The Avenue shopping mall in Newton Mearns and the shopping mall at Silverburn Pollok which is a short drive to the South West.

Recreational pursuits are varied in nearby Queen's Park where nature walks/trails, all-weather football pitches and tennis courts, a Glasshouse and a fortnightly farmer's market can be found.

Frequent public transport provides rapid commuter access to the city centre. The local railway station is approximately 200 yards walk



Sat Nav:
20 Marywood Square, Strathbungo, G41 2BJ

SS4142

*All measurements and distances are approximate.
Floorplans are for illustration purposes and may not be to scale.

For the full home report visit
www.corumproperty.co.uk



WE'RE **SOLD** ON
YOUR FUTURE



Corum Shawlands
247 Kilmarnock Road, Shawlands, G41 3JF

Tel: 0141 636 7588

Email: shawlands@corumproperty.co.uk

www.corumproperty.co.uk