



27 STIRLING DRIVE

RUTHERGLEN

www.corumproperty.co.uk

C O R U M

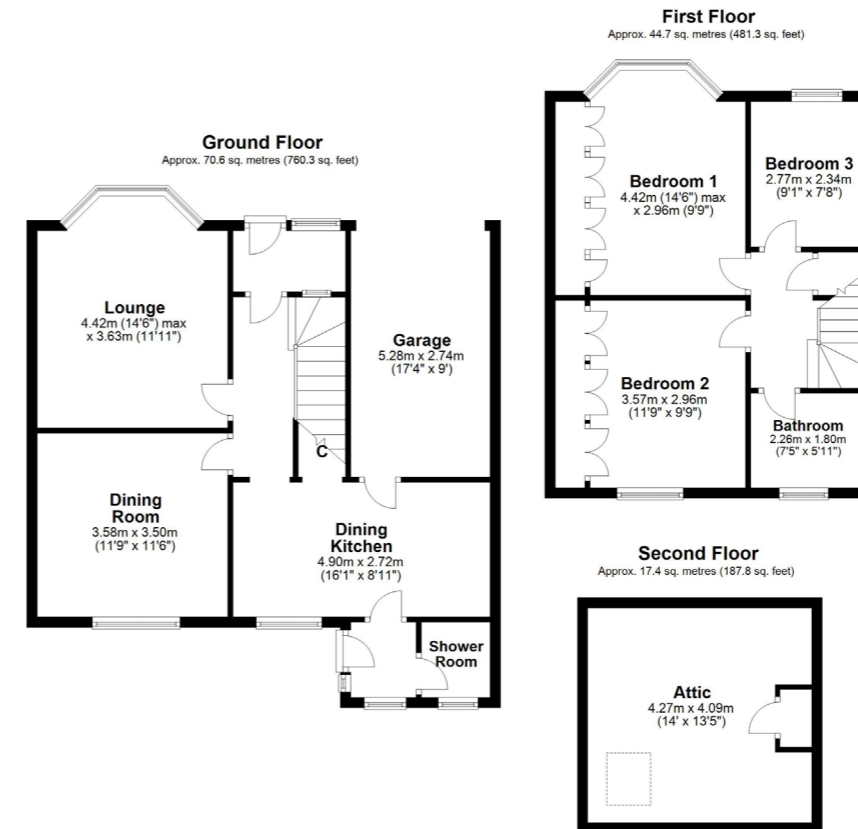
3 | BEDROOMS
2 | BATHROOMS
2 | PUBLIC ROOMS

A well presented red sandstone fronted semi-detached villa which has been extended to the side and rear of the original house and enjoys Southerly facing gardens.

- Sandstone fronted semi-detached villa
- 3 bedrooms, 2 public rooms
- Dining sized kitchen, 2 bathrooms
- Floored and lined attic
- Southerly facing rear garden
- Driveway and garage to side

Amenities

27 Stirling Drive is within walking distance of local shops and amenities on Burnside Road and Stonelaw Road whilst Burnside train station is only 500 yards away. Junction 2 of the M74 gives access to Scotland's motorway network.



Sat Nav:
 27 Stirling Drive, Rutherglen, G73 4JH

SS4147

*All measurements and distances are approximate. Floorplans are for illustration purposes and may not be to scale.

For the full home report visit www.corumproperty.co.uk



WE'RE **SOLD** ON
YOUR FUTURE



Corum Shawlands
247 Kilmarnock Road, Shawlands, G41 3JF

Tel: 0141 636 7588

Email: shawlands@corumproperty.co.uk

www.corumproperty.co.uk