



2/1, 5 KNOWEHEAD GARDENS

POLLOKSHIELDS

www.corumproperty.co.uk



3 | BEDROOMS
1 | BATHROOM
1 | PUBLIC ROOM

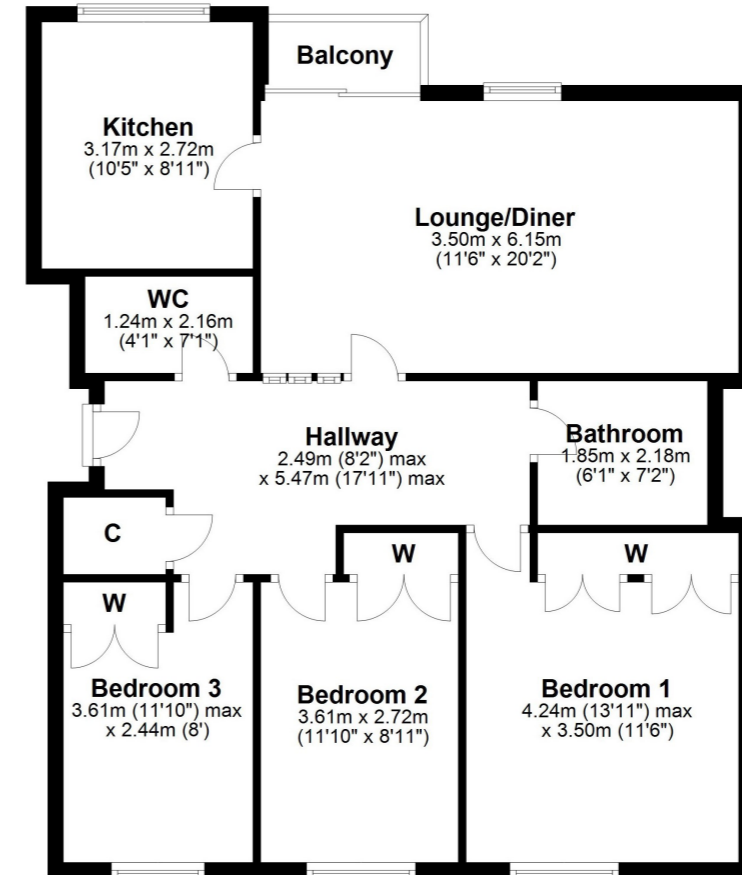
A well presented second floor flat set in this peaceful residential pocket with balcony and private lockup garage.

- Hallway with great storage
- Main lounge/diner with patio doors to private balcony
- Three flexible double bedrooms (all with storage)
- Generous kitchen
- Main bathroom and separate cloakroom with WC
- Electric heating, double glazing, door entry system, single garage

Amenities

The property is positioned within walking distance of shops and amenities upon Albert Drive, Nithsdale Road and Kildrostan Street where thriving coffee shops, restaurants and delicatessens can be found. More extensive amenities are available at the Marks and Spencer's store at Queens Park, the Sainsburys Local on Darnley Road, the Morrisons store at Crossmyloof, Giffnock or Newlands and the shopping mall at Silverburn is a short drive to the West.

Recreational pursuits are varied namely at Clydesdale Cricket Club, Titwood Bowling and Tennis Club, Haggs Castle & Pollok Golf Clubs, Maxwell Park, Pollok Country Park where Pollok House and the world famous Burrell collection can be found, also Bellahouston Park & its Ski and Sports centre.



Sat Nav:
2/1, 5 Knowehead Gardens, Pollokshields, G41 5RE

SS4158

*All measurements and distances are approximate.
 Floorplans are for illustration purposes and may not be to scale.

For the full home report visit
www.corumproperty.co.uk



WE'RE **SOLD** ON
YOUR FUTURE



Corum Shawlands
247 Kilmarnock Road, Shawlands, G41 3JF

Tel: 0141 636 7588

Email: shawlands@corumproperty.co.uk

www.corumproperty.co.uk