



**FLAT 2 20 DOWANSIDE ROAD**

DOWANHILL

[www.corumproperty.co.uk](http://www.corumproperty.co.uk)





2 | BEDROOMS

1 | BATHROOM

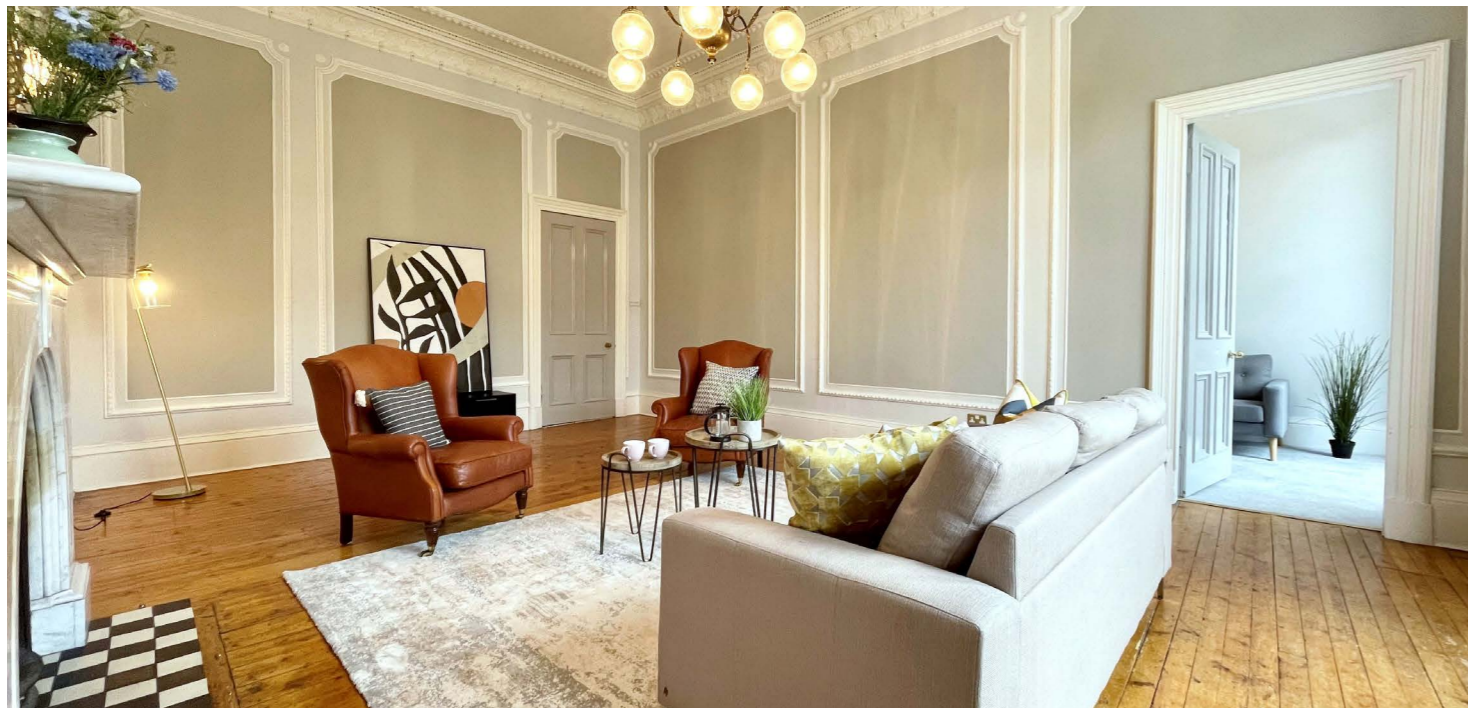
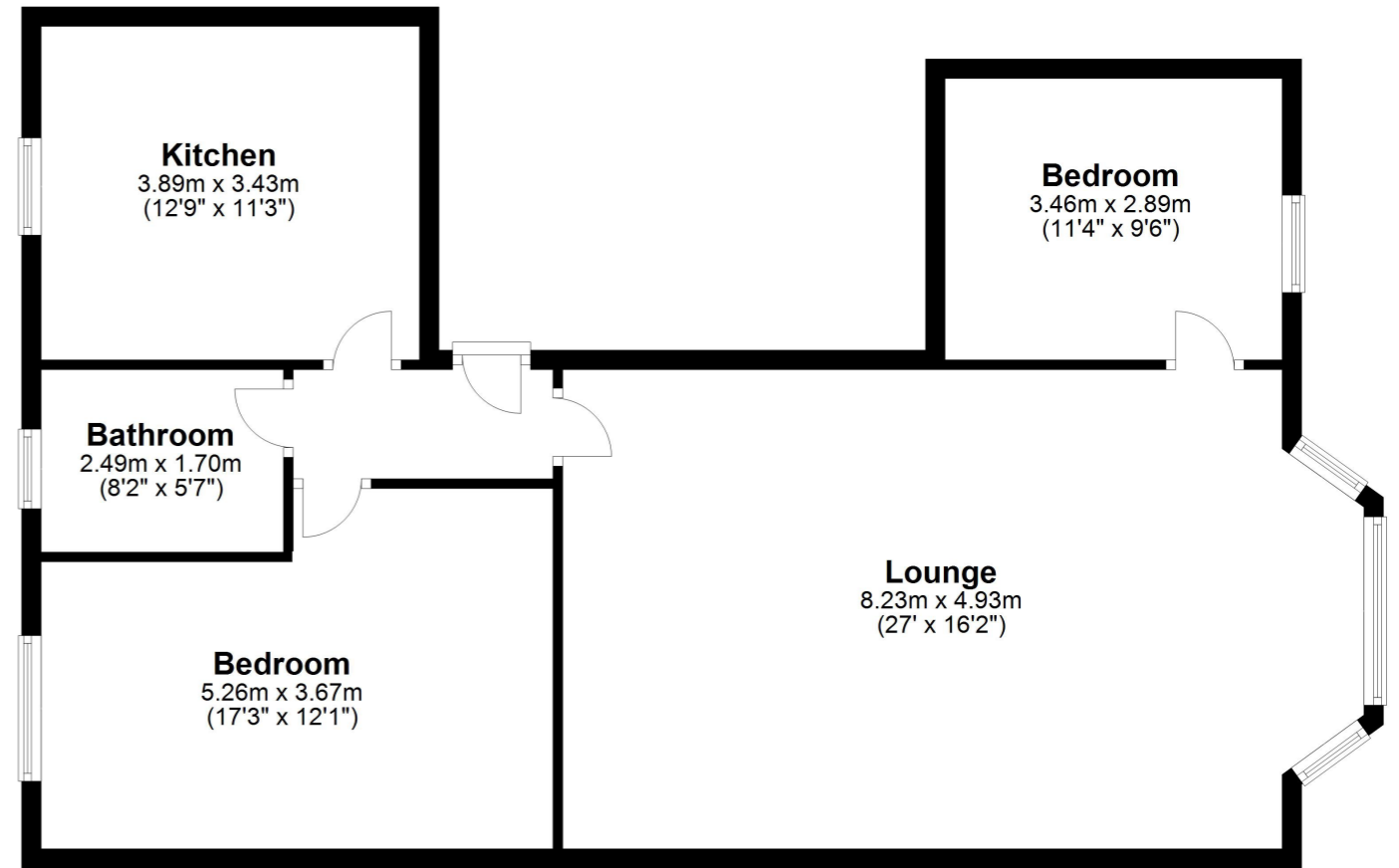
1 | PUBLIC ROOM

**Flat 2 20 Dowanside Road is a superb two-bedroom, first floor flat in a traditional sandstone townhouse, located in the heart of Glasgow's West End, just off Byres Road.**

The property is situated on the preferred first floor and the internal accommodation comprises: welcoming reception hall, stunning bay windowed sitting room with feature marble fire surround and beautiful cornicework, and a bright dining kitchen. There are two generous sized double bedrooms and finally, a modern family bathroom with over bath shower completes the accommodation on offer.

The property has gas central heating, well presented residents' communal hall and a secure entry system. On street parking permits are available on request via request to Glasgow City Council.





The leafy Dowanhill district is well placed for a wide selection of shops and amenities on both Hyndland Road and Byres Road. There are a number of bars, restaurants, cafes and delicatessens in the Hyndland Area, including Epicures and Jelly Hill. There are various supermarkets on Byres Road, including Waitrose, Marks & Spencer and a Tesco Metro. The famous Ashton Lane, just off Byres Road, offers a selection of bars, restaurants and the Grosvenor Cinema. At the top of Byres Road are the Botanic Gardens offering a beautiful green space in the city and greenhouses full of tropical plants.

**WE4566** | Sat Nav: 20 Dowanside Road, Dowanhill, Glasgow, G12 9DA

For the full home report visit [www.corumproperty.co.uk](http://www.corumproperty.co.uk)

\* All measurements and distances are approximate Floorplans are for illustration purposes and may not be to scale.



WE'RE **SOLD** ON  
YOUR FUTURE



Corum West End  
82 Hyndland Road, Glasgow, G12 9UT

Tel: 0141 357 1888

Email: [westendnq@corumproperty.co.uk](mailto:westendnq@corumproperty.co.uk)

[www.corumproperty.co.uk](http://www.corumproperty.co.uk)