



48 HAWTHORN ROAD

BUSBY

www.corumproperty.co.uk



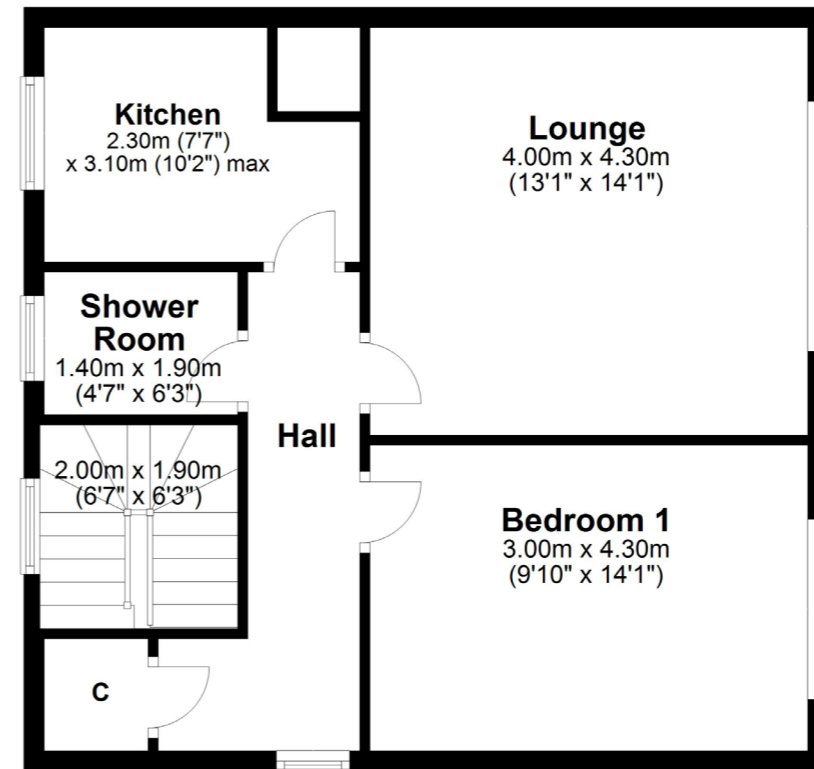
- 1 | BEDROOM
- 1 | BATHROOM
- 1 | PUBLIC ROOM

A spacious main door upper cottage flat with private garden grounds.

- Terrific ceiling heights and room proportions
- Modern kitchen and shower room
- Lovely open aspects
- Private garden
- Excellent location for transport and amenities

Amenities

The conservation village Busby enjoys a fantastic location, close by the vibrant suburbs of Clarkston and Giffnock but only a short drive from rolling countryside. There are plentiful outdoor pursuits found nearby in addition to excellent retail outlets and leisure clubs. There are many further amenities nearby including numerous golf courses and excellent high volume commuting links via road to the city centre, Lanarkshire and Ayrshire plus a direct rail link to the city centre. Pre-schooling, primary schooling and secondary schooling is found nearby and the property falls within the catchment for Busby Primary School, Williamwood High School, St Joseph's Primary School and St Ninian's High School.



Sat Nav:
48 Hawthorn Road, Busby, G76 8EH

CC0591

*All measurements and distances are approximate.
Floorplans are for illustration purposes and may not be to scale.

For the full home report visit
www.corumproperty.co.uk



WE'RE **SOLD** ON
YOUR FUTURE


C O R U M

Corum Clarkston & Netherlee
5 Helena Place, Clarkston, G76 7RB

Tel: 0141 648 6000

Email: clarkston@corumproperty.co.uk

www.corumproperty.co.uk