



**28 DOONVALE AVENUE**

DALRYMPLE

[www.corumproperty.co.uk](http://www.corumproperty.co.uk)







**4 | BEDROOMS**

**2 | BATHROOMS**

**3 | PUBLIC ROOMS**

**A beautifully presented modern detached villa ideally suited to the family market with spacious accommodation, gardens and garage within a quiet residential cul-de-sac.**

The property is an impressive detached villa built by renowned local builders Hope Homes. The property provides well proportioned accommodation over two leaves with six principal apartments and a conservatory to the rear. The apartments are bright and spacious with a high level of fixture and finish throughout including a quality kitchen (integrated appliances) with matching utility room, three piece bathroom and three piece en-suite shower room to the master bedroom.

In summary the accommodation extends to, on the ground floor, a welcoming reception hallway with cloaks/wc off, formal lounge with feature fireplace, dining room, conservatory and a modern fitted kitchen with useful utility room off. Upstairs there are four bedrooms (three with fitted wardrobes and a master with three piece en-suite shower room off). Completing the accommodation is a three piece family bathroom.

Externally the front garden has a large area of block paved parking with a decorative border to the side. The rear garden is fully enclosed with an artificial lawn and feature patio. The attached garage has an up and over door and power and lighting.



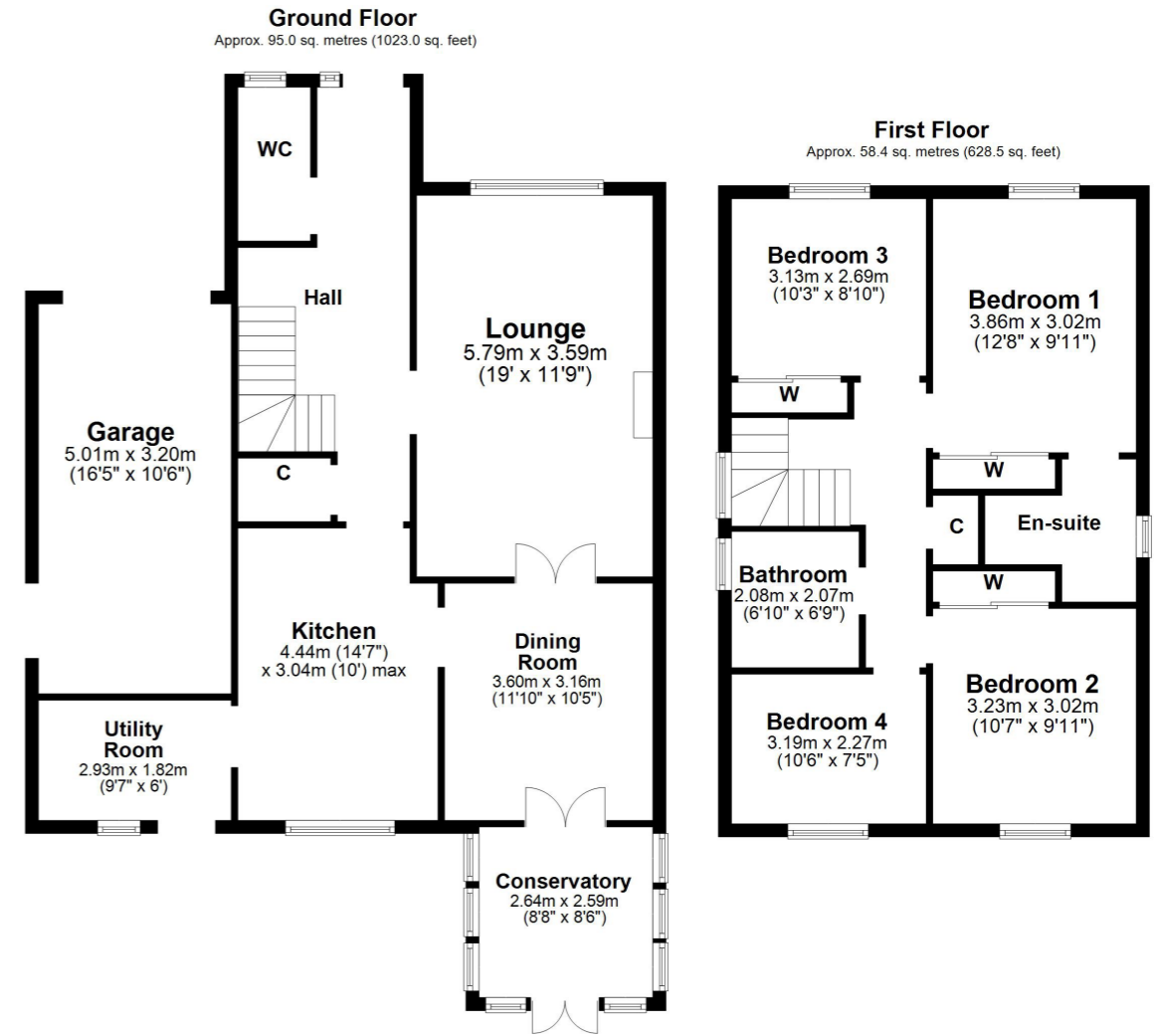
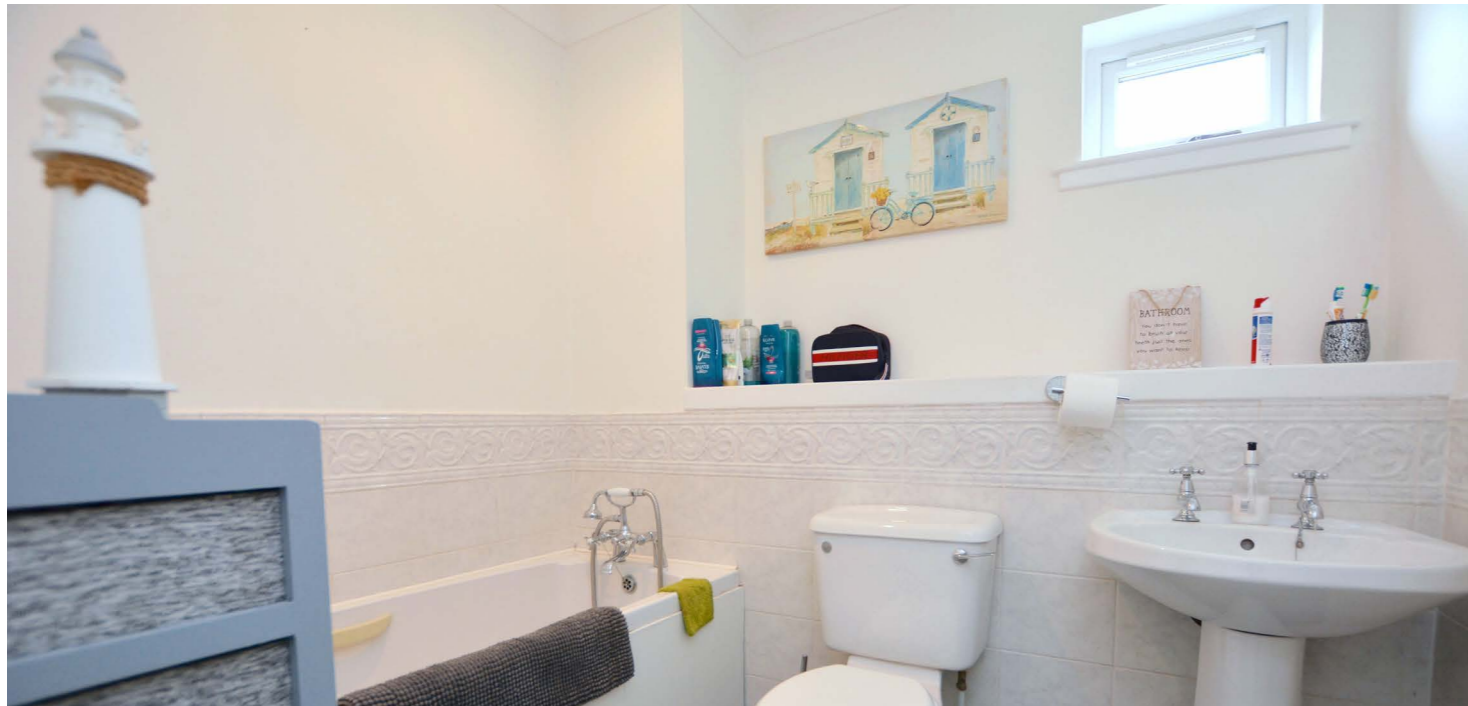
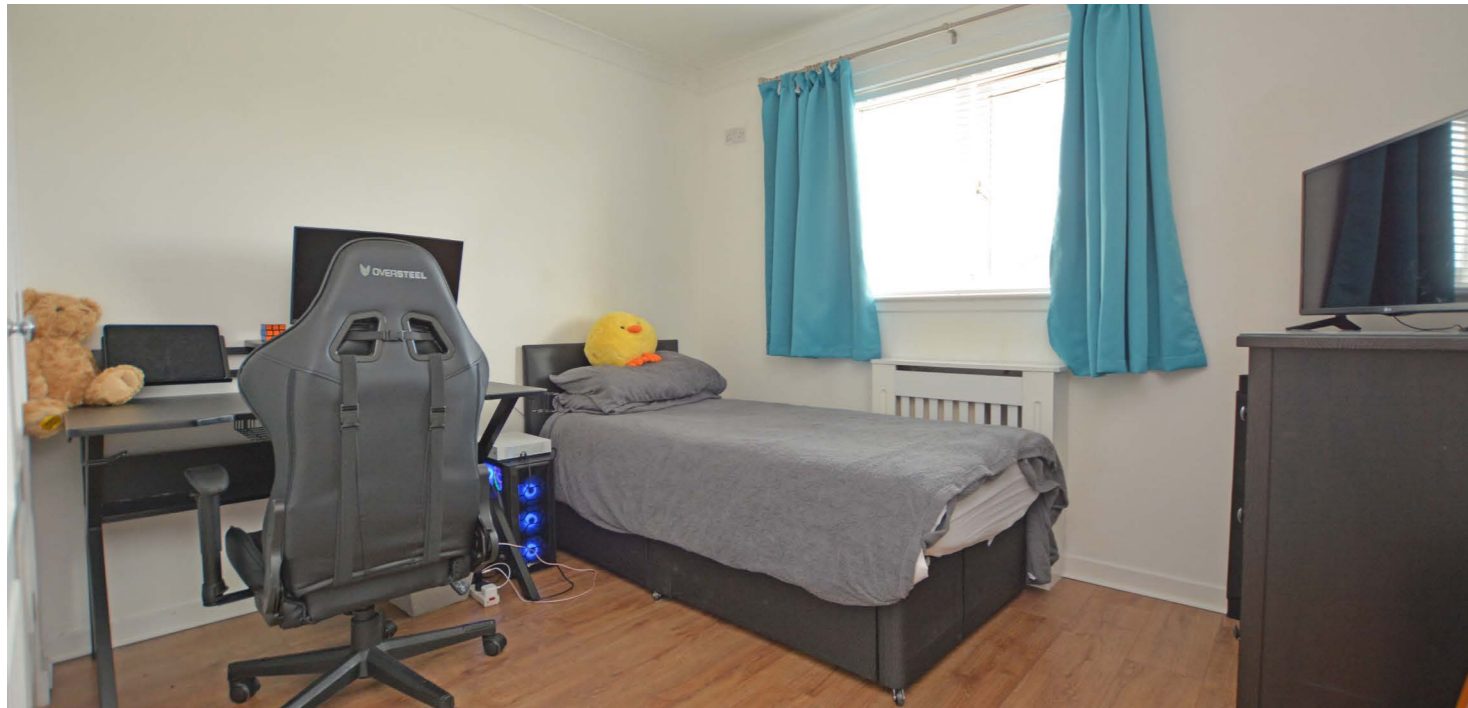












Doonvale Avenue forms part of a stylish residential development by messrs Hope Homes, renowned locally for the quality of their workmanship and standard of finish. The property is located within a quiet residential cul-de-sac on the edge of this popular village with a range of local amenities and just 5 miles from Ayr town centre.

AY4134 | Sat Nav: 28 Doonvale Avenue, Dalrymple, KA6 6GZ

For the full home report visit [www.corumproperty.co.uk](http://www.corumproperty.co.uk)

\* All measurements and distances are approximate Floorplans are for illustration purposes and may not be to scale.





WE'RE **SOLD** ON  
YOUR FUTURE



Corum Ayr  
14 Beresford Terrace, Ayr, KA7 2EG

Tel: 01292 880 888

Email: [ayr@corumproperty.co.uk](mailto:ayr@corumproperty.co.uk)

[www.corumproperty.co.uk](http://www.corumproperty.co.uk)