



**5E BERESFORD LANE**  
AYR

[www.corumproperty.co.uk](http://www.corumproperty.co.uk)

  
c o r u m





3 | BEDROOMS

2 | BATHROOMS

2 | PUBLIC ROOMS

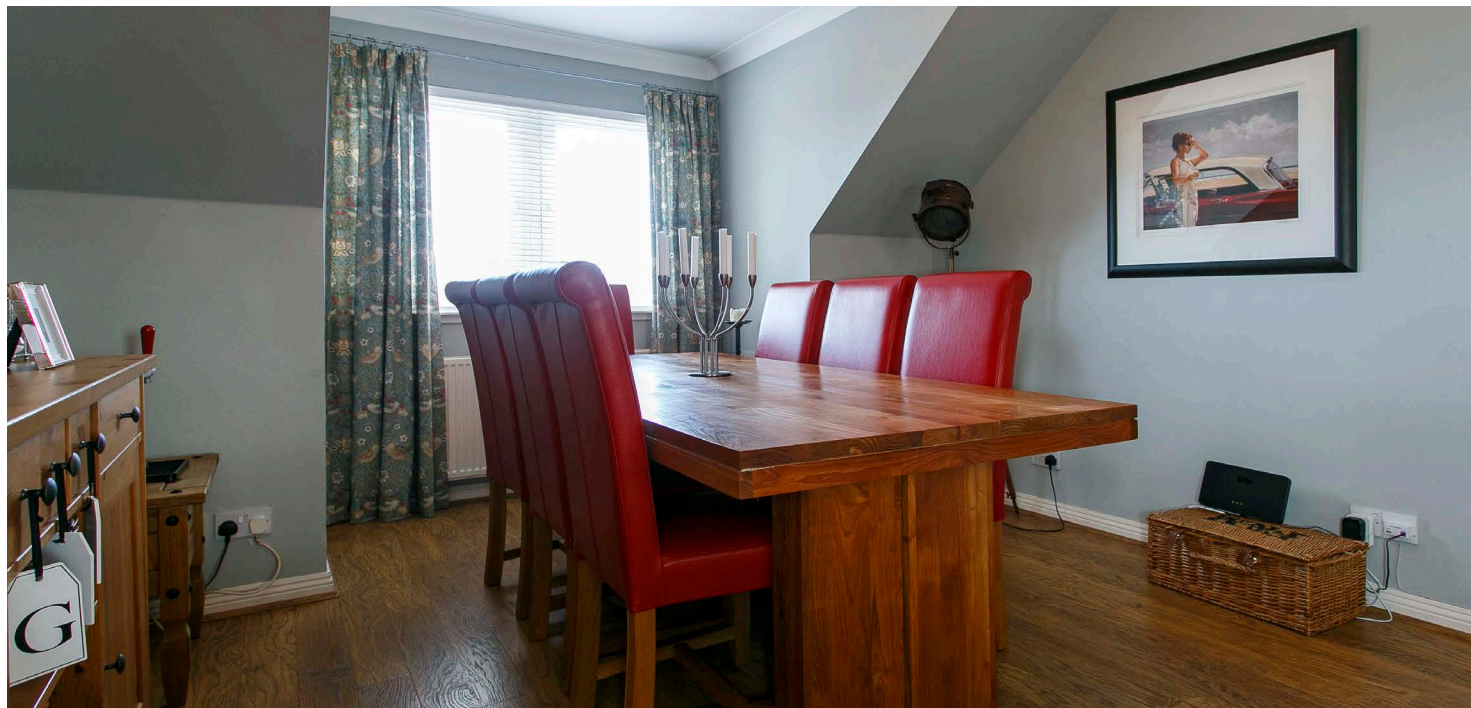
**An immaculate and impressive executive top floor apartment perfectly situated on the fringe of Ayr town centre and close to the seafront.**

This delightful, modern executive development enjoys immediate access to all the town's amenities, just a short walk from the mainline railway station, the bus station, retail shopping, parkland walks and the popular seafront.

Number 5e occupies the whole top floor of the apartment building and offers to the market a wealth of accommodation that will suit a range of potential purchasers. There are elevated rooftop views across the town of Ayr, including partial views of Arran, while there are many modern conveniences that are so sought-after, including a separate dining area, an en suite shower room, ample storage and three bedrooms. It is presented to the market in first class condition throughout and includes private designated parking and secure controlled entry, which makes it an ideal property for a variety of buyers.

In more detail, the accommodation extends to a security controlled entrance with a private landing, an entrance hallway with two storage cupboards, a spacious lounge with space for dining and triple aspect windows, a dining area off the hallway, a modern fitted kitchen with ample wall and base units, a modern fitted bathroom suite, two large double bedrooms with fitted wardrobes, including one with an en suite shower room suite, and a third bedroom, currently utilised as a home office. There are hard landscaped garden grounds surrounding the property, mainly utilised as private parking.





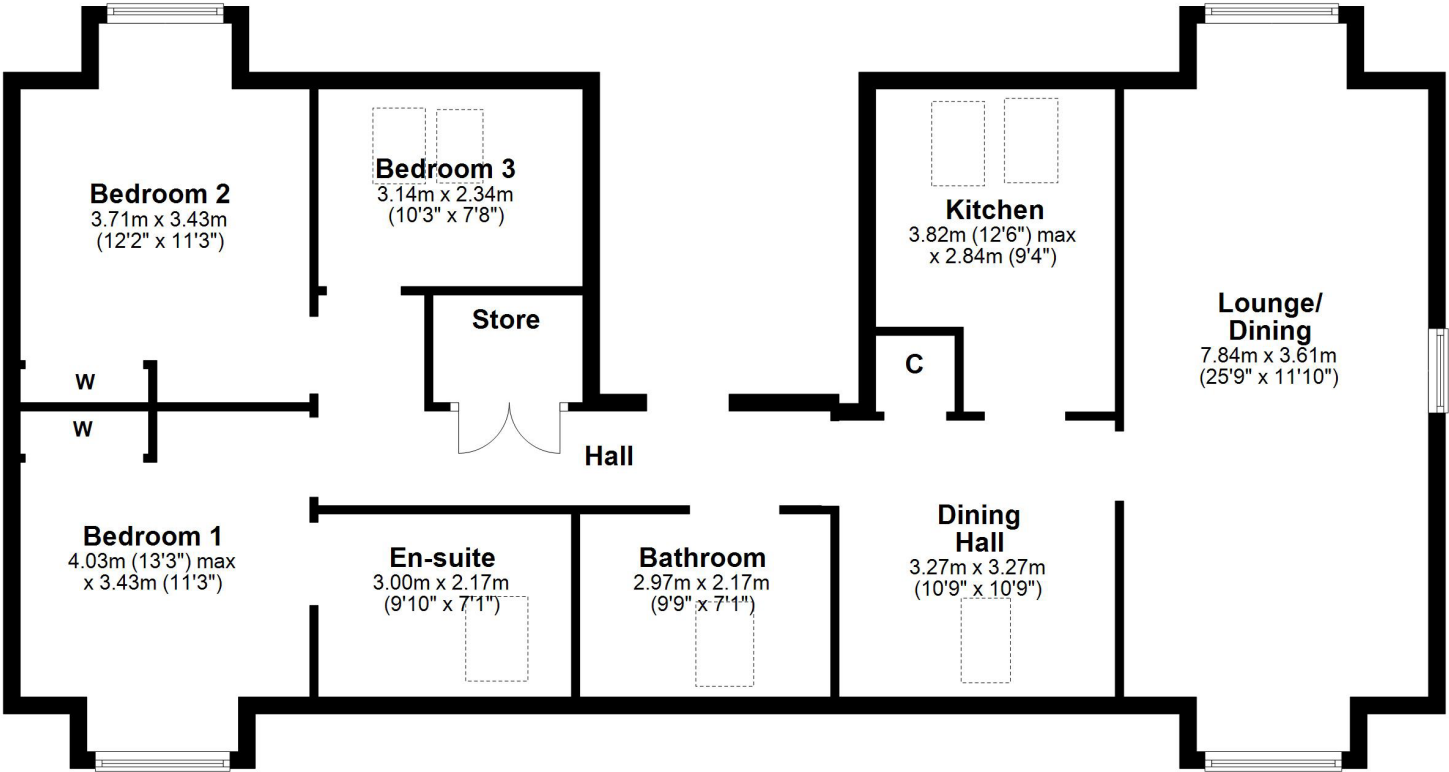












Beresford Lane is perfectly situated for access to the town centre where you will find a range of local amenities including shops, supermarkets, schools, transport links and leisure facilities. Ayr links to Glasgow and beyond via Ayr train station and via the A77/M77 road network.

AY4139 | Sat Nav: 5E Beresford Lane, Ayr, KA7 2DW

For the full home report visit [www.corumproperty.co.uk](http://www.corumproperty.co.uk)

\* All measurements and distances are approximate Floorplans are for illustration purposes and may not be to scale.

WE'RE **SOLD** ON  
YOUR FUTURE



Corum Ayr  
14 Beresford Terrace, Ayr, KA7 2EG

**Tel:** 01292 880 888

**Email:** [ayr@corumproperty.co.uk](mailto:ayr@corumproperty.co.uk)

[www.corumproperty.co.uk](http://www.corumproperty.co.uk)