



43 OBREE AVENUE
PRESTWICK

www.corumproperty.co.uk





2 | BEDROOMS

1 | BATHROOM

1 | PUBLIC ROOM

An immaculate modern semi-detached villa with an excellent level of fixture and finish and positioned in a highly sought after residential locale with a large, westerly facing rear garden.

Number 43 is a modern semi-detached villa within the ever popular Kings Meadow development and internally is presented in true walk-in condition with accommodation suited to a variety of potential purchasers.

Features and benefits include a modern fitted kitchen with integrated appliances, luxury bathroom with shower above the bath, gas central heating, quality floor coverings, mirrored wardrobes in both bedrooms and neutral decoration.

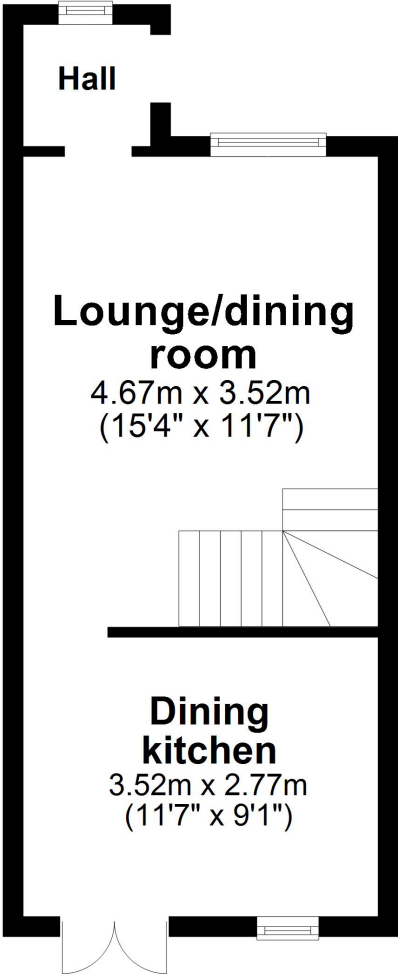
In summary the accommodation extends to, on the ground floor, an entrance hall, front facing lounge and open plan dining kitchen with double doors to the rear garden. Upstairs there are two double bedrooms and a three piece bathroom with large storage cupboard off.

Externally the front garden is laid to lawn with private driveway parking to the side. The westerly facing rear garden is fully enclosed and predominantly laid to lawn with patio areas, deck, play area, shrubbery borders and garden shed.

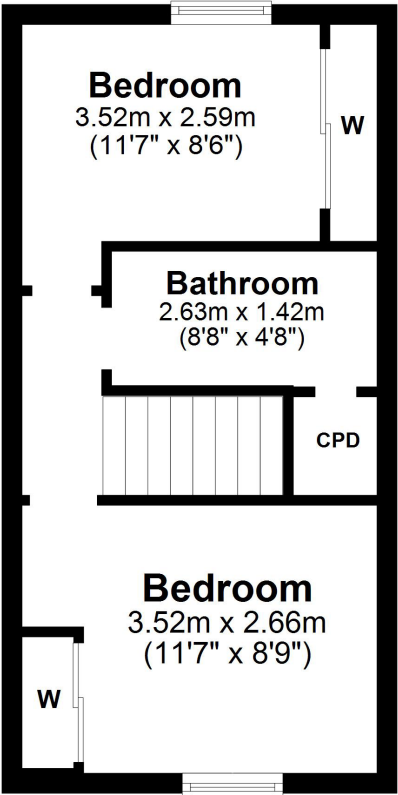




Ground Floor



First Floor



Obree Avenue is a quiet residential address within the popular Kings Meadow development on the fringes of Prestwick and ideally placed for excellent schooling and access to the A77/M77 bypass linking to Glasgow. Prestwick town centre provides a plethora of boutique shops, restaurants and bars and mainline rail link.

AY4153 | Sat Nav: 43 Obree Avenue, Prestwick, KA9 2NN

For the full home report visit www.corumproperty.co.uk

* All measurements and distances are approximate Floorplans are for illustration purposes and may not be to scale.



WE'RE **SOLD** ON
YOUR FUTURE



Corum Ayr
14 Beresford Terrace, Ayr, KA7 2EG

Tel: 01292 880 888

Email: ayr@corumproperty.co.uk

www.corumproperty.co.uk