



**6 BEAGLE CRESCENT**  
DOONFOOT

[www.corumproperty.co.uk](http://www.corumproperty.co.uk)







**4 | BEDROOMS**

**2 | BATHROOMS**

**3 | PUBLIC ROOMS**

**An utterly charming detached villa located a short distance from Greenan foreshore and seafront.**

This immaculate property enjoys a quiet position located just a stones throw from Greenan foreshore and beach front. The property benefits from enclosed landscaped gardens and sits on a large corner plot which is accessed from both Beagle Crescent and Greenan Road.

It is a substantial home with accommodation laid out across two levels comprising three public rooms and four bedrooms. There is a separate garage and the delightful enclosed gardens retain a high degree of privacy.

The subjects are presented to the market in excellent condition and given the facility of bedrooms and bathroom located on the ground floor it would suit the family market as well as those clients downsizing and requiring enough space for extended family and grandchildren etc.

In more detail the accommodation comprises entrance hall, formal lounge with feature fireplace, dining room with patio doors, modern fitted kitchen with breakfast area, utility, upstairs family/tv room, four good bedrooms, en suite shower room, downstairs family bathroom, double glazing, gas central heating.

The enclosed mature gardens are well laid out with extensive lawn and mature borders. The sheltered rear garden is landscaped for ease of maintenance and leads to a garage which has a driveway with private parking for two vehicles and access to Greenan Road.













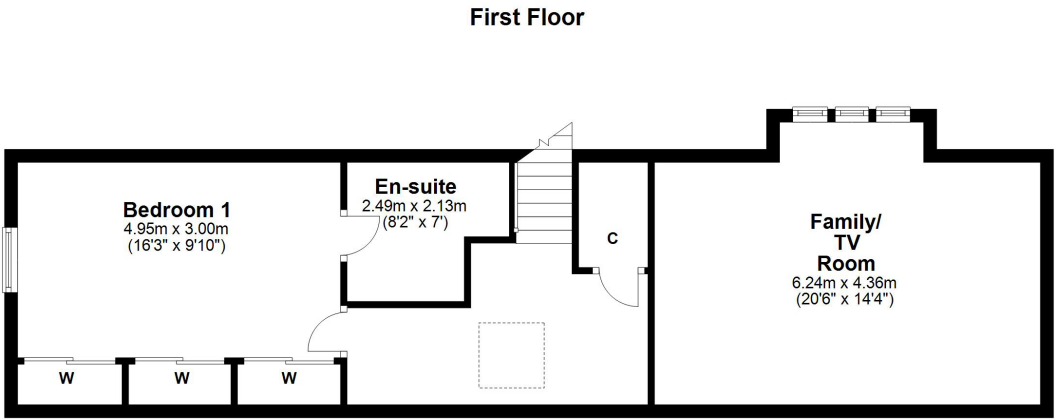
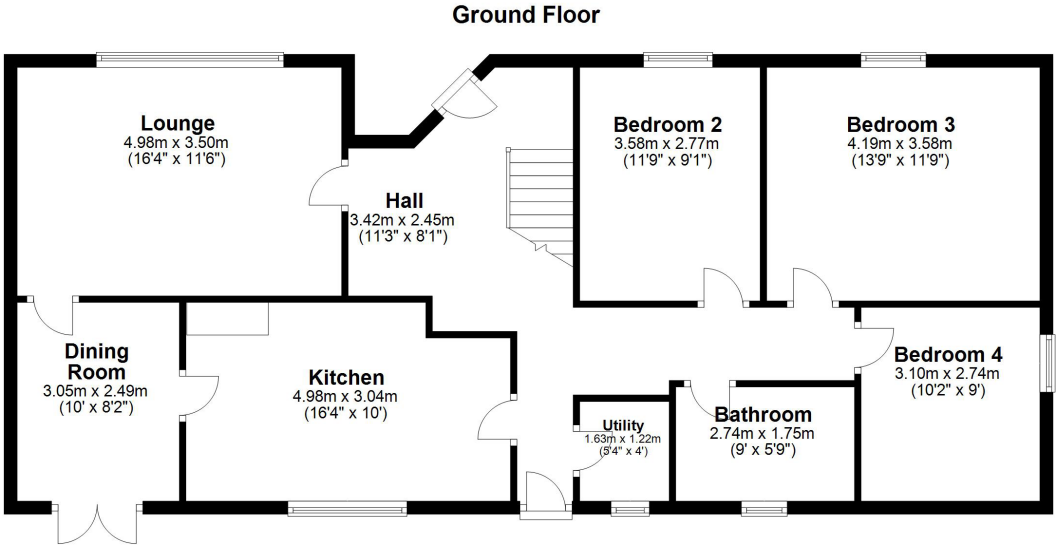












Beagle Crescent lies a short distance from Greenan foreshore and beach front. It is a first class residential area with excellent local amenities including Doonfoot Primary School, Co Op mini supermarket, hot food take away and Priya Indian restaurant.

**AY4157** | Sat Nav: 6 Beagle Crescent, Doonfoot, KA7 4EX

For the full home report visit [www.corumproperty.co.uk](http://www.corumproperty.co.uk)

\* All measurements and distances are approximate Floorplans are for illustration purposes and may not be to scale.





WE'RE **SOLD** ON  
YOUR FUTURE



Corum Ayr  
14 Beresford Terrace, Ayr, KA7 2EG

**Tel:** 01292 880 888

**Email:** [ayr@corumproperty.co.uk](mailto:ayr@corumproperty.co.uk)

[www.corumproperty.co.uk](http://www.corumproperty.co.uk)