



FLAT 0/1, 1 GOUROCK ROPEWORKS

BAY STREET, PORT GLASGOW

www.corumproperty.co.uk



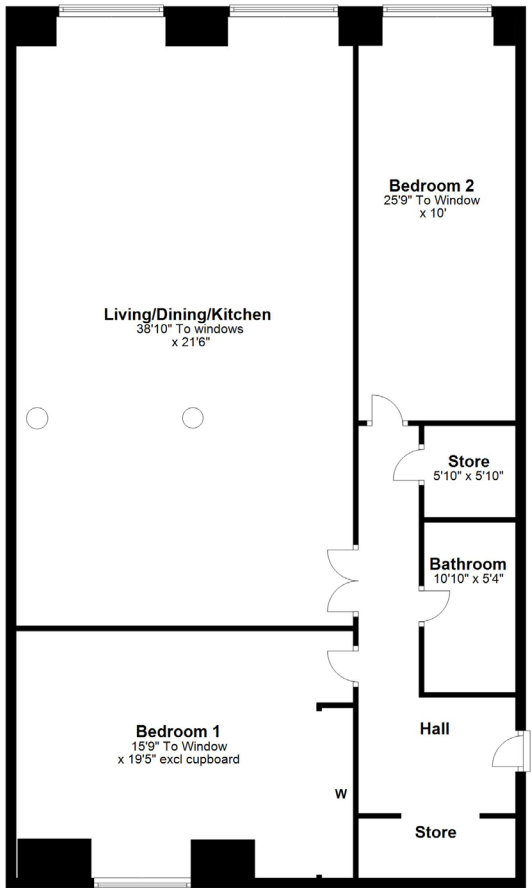
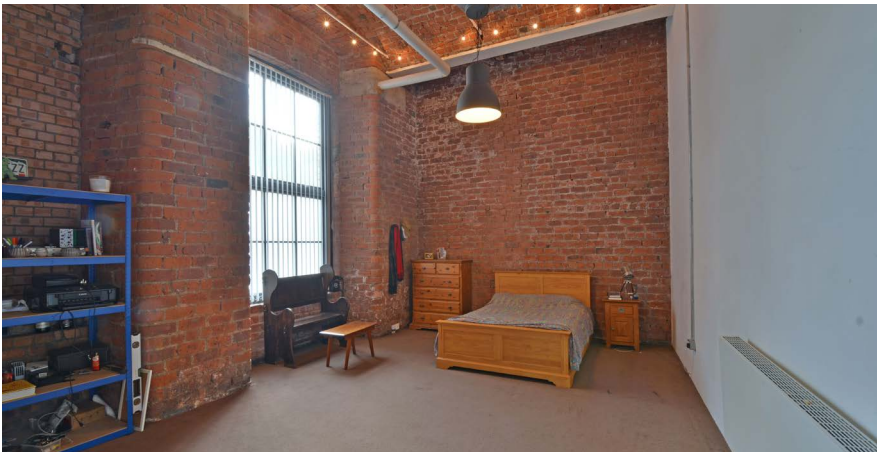
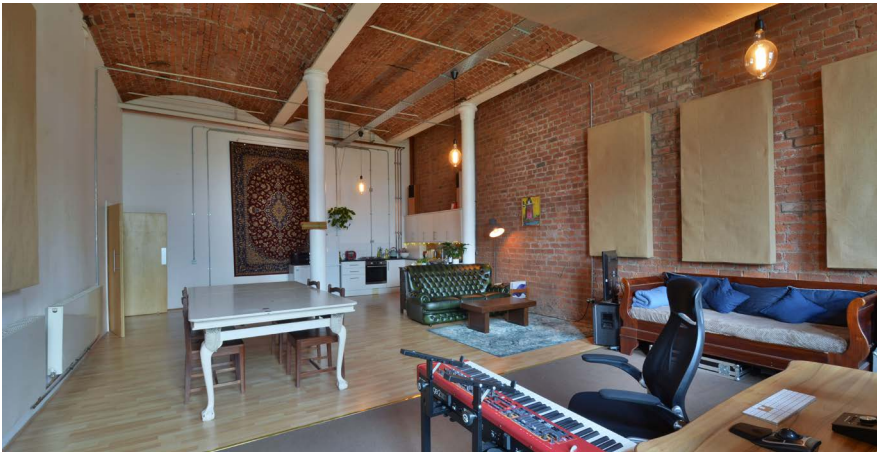
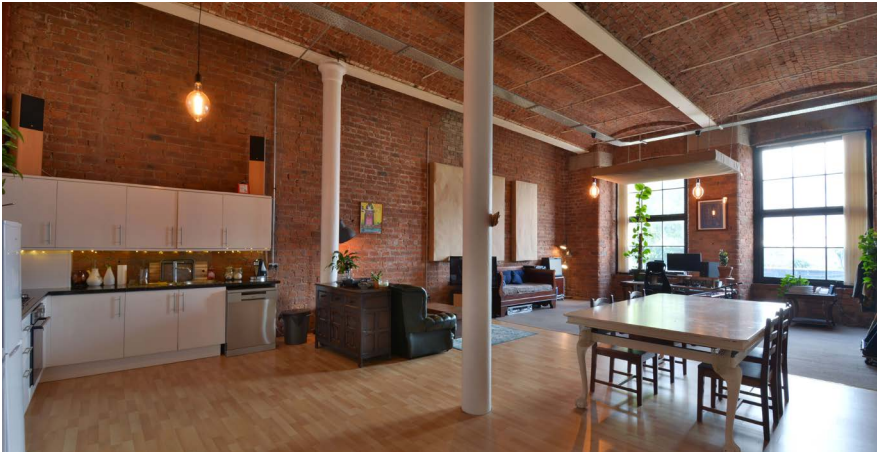
2 | BEDROOMS
1 | BATHROOM
1 | PUBLIC ROOM

A stylish ground floor loft style apartment positioned within the unique A listed Gourock Ropeworks building that offers characterful and spacious accommodation.

- Ground floor loft style apartment
- A listed former industrial building converted in approximately 2005 into apartments
- Communal residents’ gardens and two allocated parking spaces
- Features include exposed brick walls, pillars, beams and double height ceilings
- Reception hallway with two store cupboards, stunning open plan living dining and kitchen space
- Two large double bedrooms, bathroom
- Gas central heating, double glazing, security entry system, lift and stair access

Amenities

Gourock Ropeworks is positioned on Bay Street opposite the Ferguson shipyard works and landscaped shorefront with Newark Castle. There is access to the A8 dual carriageway leading onto the M8 motorway network as well as Port Glasgow town centre and the adjacent retail park with supermarket facilities. The property has convenient access to Glasgow International Airport being approximately a 15 minute drive away. Port Glasgow railway station has a regular service leading to Glasgow Central and there are a wide range of retail and leisure facilities within the local area. Port Glasgow is positioned on the southern banks of the river Clyde and there are various watersport facilities within the Inverclyde area including the marina at Inverkip and Gourock Royal Yacht Club. There is established local schooling at primary and secondary levels.



Sat Nav:
1 Gourock Ropeworks, Bay Street Port Glasgow, PA14 5EN

BW2086

*All measurements and distances are approximate.
Floorplans are for illustration purposes and may not be to scale.

For the full home report visit
www.corumproperty.co.uk



WE'RE **SOLD** ON
YOUR FUTURE



Corum Bridge Of Weir
2 Windsor Place, Main Street, Bridge Of Weir, PA11 3AF

Tel: 01505 691 400

Email: bridgeofweir@corumproperty.co.uk

www.corumproperty.co.uk