



**35 QUARRY STREET**

COATBRIDGE

[www.corumproperty.co.uk](http://www.corumproperty.co.uk)

  
c o r u m

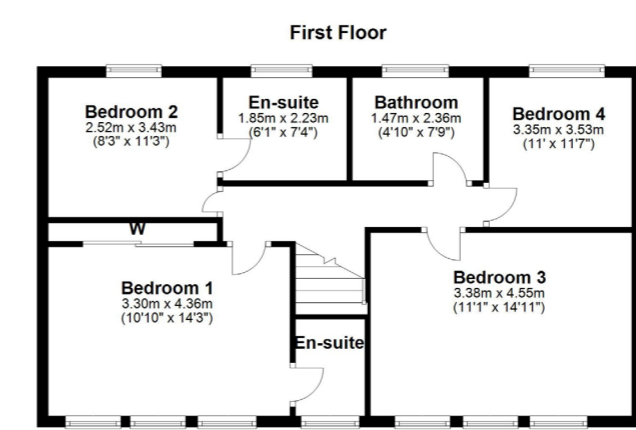
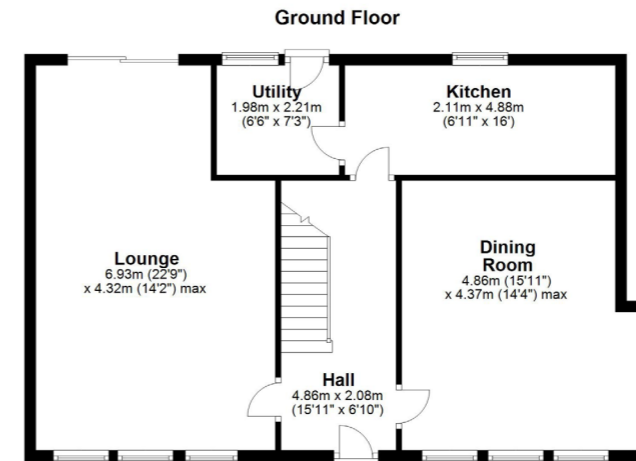
**4 | BEDROOMS**  
**3 | BATHROOMS**  
**2 | PUBLIC ROOMS**

A comprehensively remodelled extended 4 bedroom semi-detached villa, set in sweeping corner grounds.

- Hallway, 2 large public rooms
- Modern fitted kitchen, dedicated utility room
- 4 good bedrooms 2 with ensuite
- Main family bathroom
- Gas central heating, double glazing, double garage
- An excellent family home!

**Amenities**

The property is positioned within walking distance of shops and amenities, more extensive facilities can be found at the nearby Asda store approximately 500 yards. The area is well serviced, local schooling at Primary and Secondary level, well maintained municipal parks, golf courses both public and private.



**Sat Nav:**  
 35 Quarry Street, Coatbridge, ML5 3PY

**SS4180**

\*All measurements and distances are approximate. Floorplans are for illustration purposes and may not be to scale.

For the full home report visit  
[www.corumproperty.co.uk](http://www.corumproperty.co.uk)





WE'RE **SOLD** ON  
YOUR FUTURE



C O R U M

Corum Shawlands  
247 Kilmarnock Road, Shawlands, G41 3JF

**Tel:** 0141 636 7588

**Email:** [shawlands@corumproperty.co.uk](mailto:shawlands@corumproperty.co.uk)

[www.corumproperty.co.uk](http://www.corumproperty.co.uk)