



**125D WELBECK CRESCENT**  
TROON

[www.corumproperty.co.uk](http://www.corumproperty.co.uk)





**3 | BEDROOMS**

**2 | BATHROOMS**

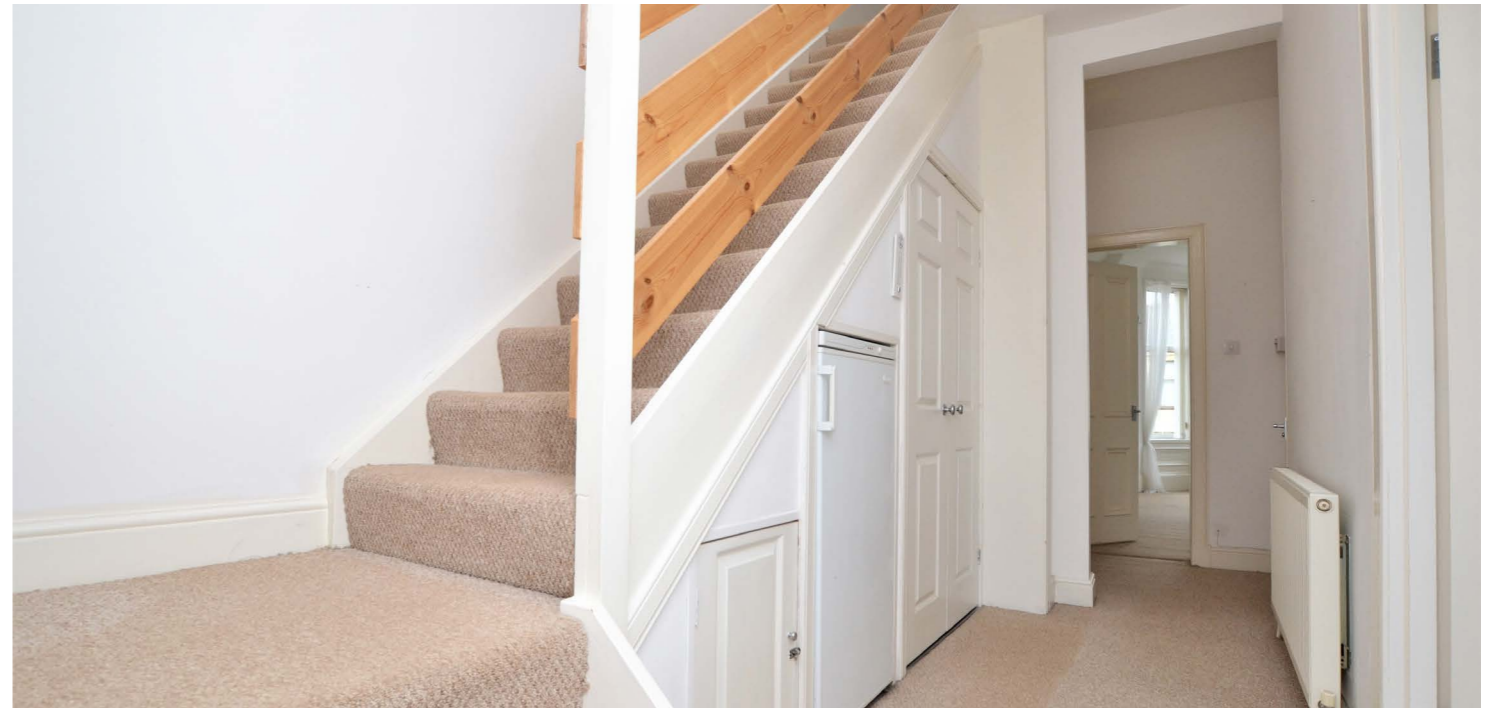
**1 | PUBLIC ROOM**

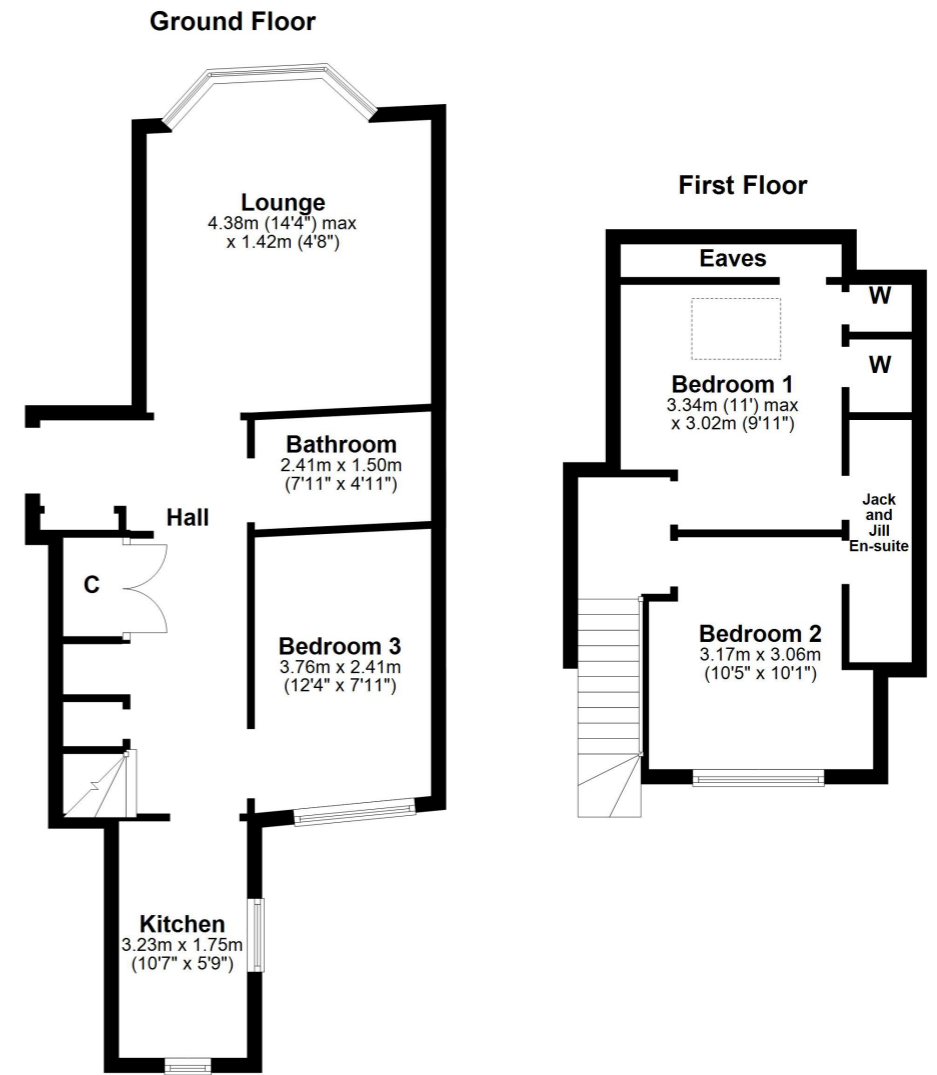
**An immaculately presented traditional upper apartment just a short walk from both Troon town centre and the popular seafront, with accommodation set across two floors, low maintenance south-facing garden grounds and elevated partial sea views.**

125d Welbeck Crescent is a truly pristine example of a spacious upper apartment, combining all the traditional period features one would expect from a sandstone property with luxury, modern fixtures and fittings. Renovations to the property have now created a fantastic home in walk-in condition, with extended accommodation into the original attic space, set close to both the seafront and Troon town centre. There are partial sea views from both the kitchen and rear bedrooms and ample storage throughout the property, with generous cupboard space and additional access into the eaves. The south-facing rear garden has been laid with low maintenance in mind and there is also a communal drying area laid mainly with lawn.

In more detail, the internal accommodation extends to a bright entrance hallway with ample under stairs storage, a spacious bay-windowed lounge to the front, a modern fitted kitchen, a downstairs double bedroom and a modern fully-tiled family bathroom suite. On the upper floor there are two large double bedrooms that share a fully tiled en suite shower room. The rear bedroom has elevated partial views out to sea.

Externally there is a hard-landscaped private section of garden to the rear and a large communal south-facing garden laid mainly with lawn.





Welbeck Crescent is well-positioned for access to the delightful seafront and all the main amenities offered by Troon town centre, including schools, shops, restaurants and bars, transport links to Glasgow and beyond, supermarkets and leisure facilities. There are a number of first class golf courses locally, including Royal Troon, which recently hosted the Open Championship and Prestwick International Airport flies to a number of destinations throughout Europe.

**TR1545** | Sat Nav: 125 Welbeck Crescent, Troon, KA10 6AR

For the full home report visit [www.corumproperty.co.uk](http://www.corumproperty.co.uk)

\* All measurements and distances are approximate. Floorplans are for illustration purposes and may not be to scale.



WE'RE **SOLD** ON  
YOUR FUTURE



C O R U M

Corum Troon  
29 Portland Street, Troon, KA10 6AA

**Tel:** 01292 310 010

**Email:** [troon@corumproperty.co.uk](mailto:troon@corumproperty.co.uk)

[www.corumproperty.co.uk](http://www.corumproperty.co.uk)