



41 MCLAREN COURT

GIFFNOCK

www.corumproperty.co.uk



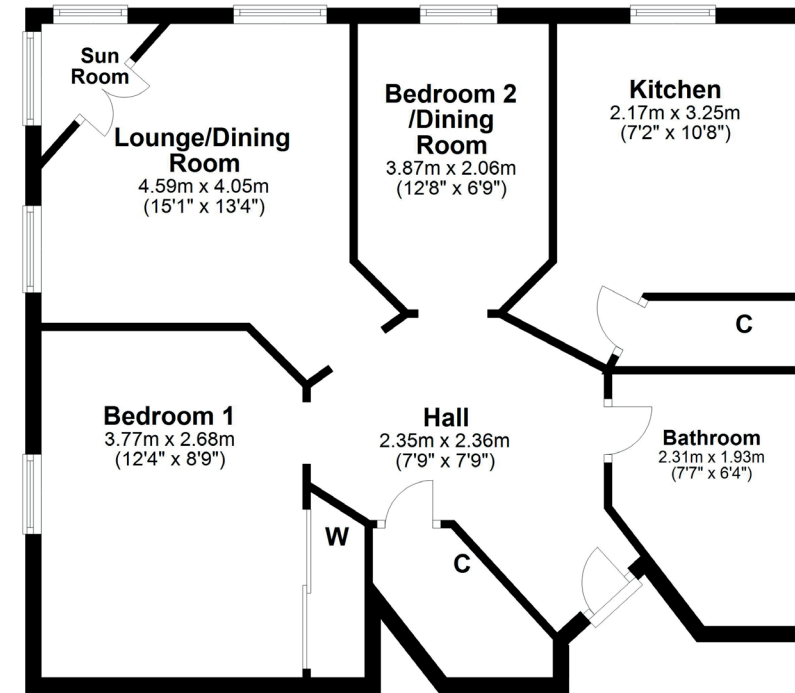
2 | BEDROOMS
1 | BATHROOM
1 | PUBLIC ROOM

Bright and spacious retirement apartment in a prominent Giffnock location.

- Beautifully upgraded kitchen and bathroom.
- New carpets and neutral décor throughout.
- An iconic modern development central to all of Giffnock amenities.
- Purpose built for independent retirement living.
- Spacious lounge with feature sunroom boasting terrific views.
- Manicured residents' gardens.
- Private residents' parking.

Amenities

Giffnock continues to be one of the most desirable residential suburbs on Glasgow's south side with excellent transport links via bus and train close at hand, in addition to local motorway links (M77/M8) providing swift access to the city centre and Ayrshire. There are two train stations within close proximity, Whitecraigs Train Station and Giffnock Train Station. There are numerous independent shops, restaurants and delicatessens only a short walk away. An abundance of sports and leisure facilities are available within East Renfrewshire including David Lloyd Sports Club, Nuffield Health Gym, Whitecraigs Golf Club, Giffnock and Whitecraigs Tennis Clubs and Rouken Glen Park which was voted UK's Best Park of 2016.



Sat Nav:
41 McLaren Court, Giffnock, G46 6UF

NM3879

*All measurements and distances are approximate. Floorplans are for illustration purposes and may not be to scale.

For the full home report visit
www.corumproperty.co.uk



WE'RE **SOLD** ON
YOUR FUTURE



Corum Newton Mearns
134 Ayr Road, Newton Mearns, G77 6EG

Tel: 0141 639 5888

Email: n.mearns@corumproperty.co.uk

www.corumproperty.co.uk