



## 2 UNDERWOOD COTTAGES

AUCHINLECK ROAD, CUMNOCK

[www.corumproperty.co.uk](http://www.corumproperty.co.uk)



c o r u m





**3 | BEDROOMS**

**1 | BATHROOM**

**2 | PUBLIC ROOMS**

**A charming semi-detached chalet bungalow providing deceptively spacious accommodation and set in mature, well stocked gardens close to the town centre.**

Number 2 Underwood Cottages is a semi-detached chalet bungalow which provides flexible accommodation over two levels suited to both the family market and indeed those clients seeking all on the level accommodation.

The property represents a rare opportunity to acquire a lovely home set amidst lovely gardens within close proximity to the town centre.

Internally features and benefits include a modern fitted kitchen, large conservatory with space for both dining and relaxing, three-piece bathroom, double glazing, gas central heating, quality floor covering and neutral decoration.

In summary the accommodation extends to, on the ground floor, a reception hallway, front facing lounge with open coal fire and feature fireplace, fitted kitchen, conservatory, double bedroom and three piece bathroom. Upstairs there are two further double bedrooms.

Externally, the gardens are a credit to the current owners with well-stocked shrubbery borders, mature plants and trees and areas of lawn. A block paved driveway continues to the side of the property and culminates in the detached garage with power and lighting installed.





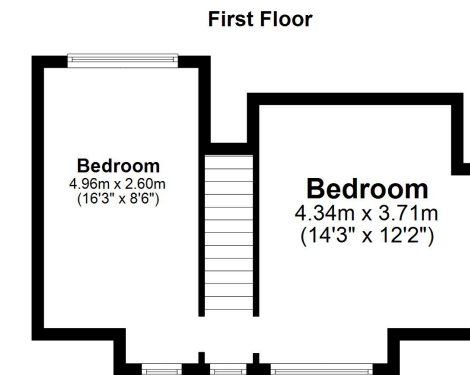
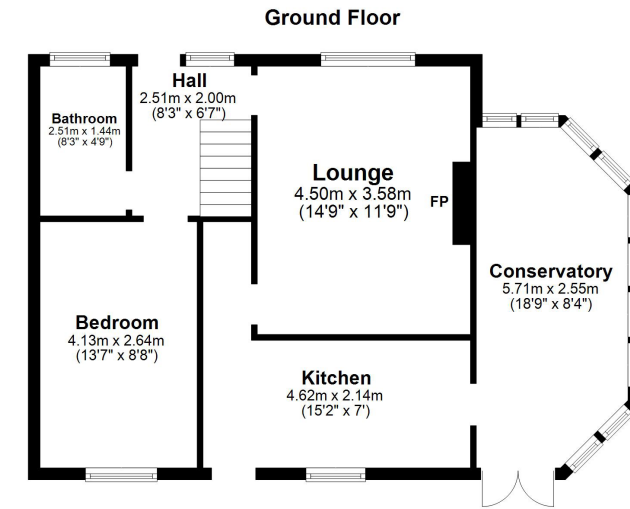












The property is located within close proximity to the centre of Cumnock which offers a range of amenities including supermarket and retail shopping, bars, restaurants, transport links, recreational facilities and both excellent primary and secondary schooling. In addition there is easy access to a riverside walk leading to Dumfries House estate.

AY4140 | Sat Nav: 2 Underwood Cottages, Auchinleck Road, Cumnock, KA18 1RS

For the full home report visit [www.corumproperty.co.uk](http://www.corumproperty.co.uk)

\* All measurements and distances are approximate Floorplans are for illustration purposes and may not be to scale.

WE'RE **SOLD** ON  
YOUR FUTURE



c o r u m

Corum Ayr  
14 Beresford Terrace, Ayr, KA7 2EG

**Tel:** 01292 880 888

**Email:** [ayr@corumproperty.co.uk](mailto:ayr@corumproperty.co.uk)

[www.corumproperty.co.uk](http://www.corumproperty.co.uk)