



# 4 WHITEFAULDS QUADRANT

## MAYBOLE

[www.corumproperty.co.uk](http://www.corumproperty.co.uk)





**3 | BEDROOMS**

**1 | BATHROOM**

**1 | PUBLIC ROOM**

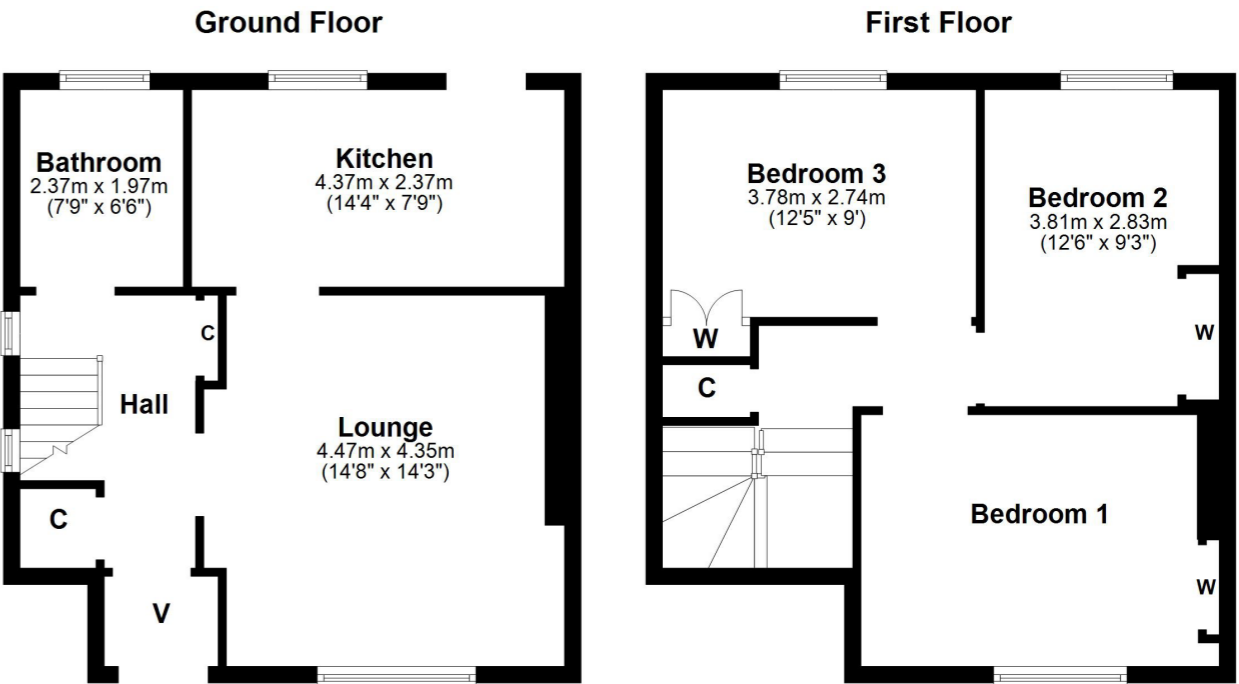
**A well-presented and spacious semi detached family villa set on a preferred corner plot, with flexible generous accommodation and hard-landscaped gardens with ample parking facility.**

4 Whitefaulds Quadrant is a fantastic example of a spacious semi detached family villa, with landscaped gardens and within walking distance of local schooling. The property is set on a preferred corner plot with an incredible amount of hard-landscaped parking and the interior is well-presented with a wealth of living space. There is ample storage, gas central heating, double glazing, attic space and quality flooring throughout. This superb home will appeal to a range of potential buyers and viewing is absolutely essential.

In more detail, the internal accommodation extends to an entrance vestibule, a hallway with stairs leading to the upper floor and under stairs storage, a spacious lounge with a door leading through to the fitted kitchen, with a door to the rear garden, and a downstairs shower room suite. On the upper floor there is loft access, a storage cupboard off the landing and three double bedrooms with fitted storage.

Externally there are generous gated gardens to the front, side and rear that are laid with monoblock, allowing off road parking for a number of vehicles and a drying area.





Maybole is a popular town, with a range of local amenities, located just 7 miles from the market town of Ayr, which offers a comprehensive range of amenities including excellent schooling, retail shopping and leisure facilities. The A77 links via the M77 to Glasgow and Whitefaulds Quadrant is within walking distance of Maybole train station, which also links to Ayr, Glasgow and beyond. South Ayrshire is home to some of the world's finest golf courses and resorts, including the nearby Trump Turnberry and Royal Troon, both hosts of the Open Championship. Prestwick International Airport is only 16 miles away, with flights to many destinations throughout Europe.

**AY4169** | Sat Nav: 4 Whitefaulds Quadrant, Maybole, KA19 8AU  
For the full home report visit [www.corumproperty.co.uk](http://www.corumproperty.co.uk)

\* All measurements and distances are approximate Floorplans are for illustration purposes and may not be to scale.



WE'RE **SOLD** ON  
YOUR FUTURE



Corum Ayr  
14 Beresford Terrace, Ayr, KA7 2EG

**Tel:** 01292 880 888

**Email:** [ayr@corumproperty.co.uk](mailto:ayr@corumproperty.co.uk)

[www.corumproperty.co.uk](http://www.corumproperty.co.uk)