



**29 ANNFIELD ROAD**

PRESTWICK

[www.corumproperty.co.uk](http://www.corumproperty.co.uk)







**2 | BEDROOMS**

**1 | BATHROOM**

**1 | PUBLIC ROOM**

**An exceptionally spacious and beautifully presented terraced bungalow, with private south-facing gardens and perfectly located within walking distance of Prestwick town centre and the popular seafront.**

Annfield Road is nestled in a quiet cul-de-sac within Prestwick, ideally situated equidistant from the heart of the town and the seafront. Number 29 is a charming and spacious terraced bungalow that offers an excellent amount of on-the-level living space, with a large attic space extending to around 50m<sup>2</sup> that is prime for conversion into additional accommodation to create a substantial family home, subject to the normal planning consents. There is a fitted kitchen and modern bathroom suite, with original period doors, quality floor coverings and neutral decor throughout. This fantastic home also benefits from a private south-facing garden at the rear and ample on street parking.

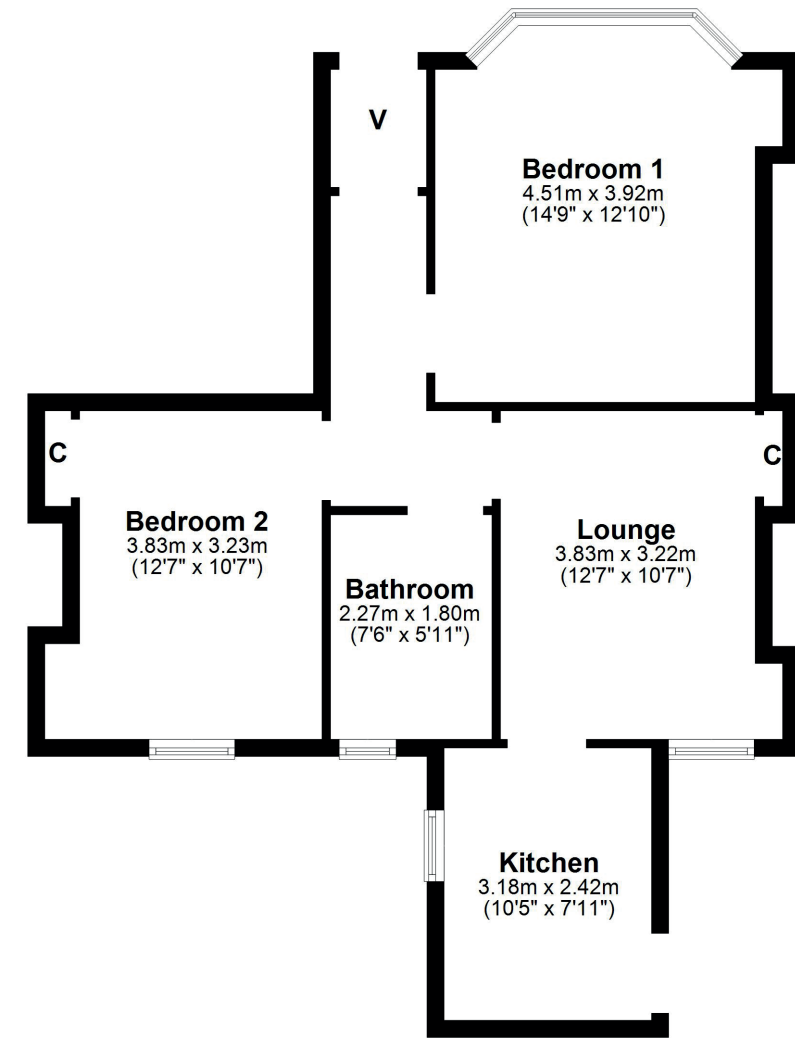
In more detail, the internal accommodation extends to an entrance vestibule, a hallway with loft access, a spacious lounge to the rear leading through to a fitted kitchen with a door to the rear garden, a modern family bathroom suite with a shower over the bath, a bright, bay-windowed bedroom to the front and a second double bedroom to the rear.

Externally there are gated, hard landscaped gardens to the front and the south-facing rear garden is enclosed, with access for bins, and laid mainly with lawn, a pave pathway and a patio area.









The property is located within close proximity to the bustling town centre of Prestwick, which provides a plethora of boutique shops, bars and restaurants. In addition the seafront/promenade is close by and there are excellent road and rail links to Glasgow and surrounding areas.

AY4193 | Sat Nav: 29 Annfield Road, Prestwick, KA9 1PP

For the full home report visit [www.corumproperty.co.uk](http://www.corumproperty.co.uk)

\* All measurements and distances are approximate Floorplans are for illustration purposes and may not be to scale.





WE'RE **SOLD** ON  
YOUR FUTURE



Corum Ayr  
14 Beresford Terrace, Ayr, KA7 2EG

**Tel:** 01292 880 888

**Email:** [ayr@corumproperty.co.uk](mailto:ayr@corumproperty.co.uk)

[www.corumproperty.co.uk](http://www.corumproperty.co.uk)