



CLIFTON, MAIN STREET
GARTOCHARN

www.corumproperty.co.uk





2 | BEDROOMS

1 | SHOWER ROOM

1 | PUBLIC ROOMS

Set in the beautiful picturesque village of Gartocharn, this quaint, two bedroom, detached cottage has been cherished by its current family for circa 70 years.

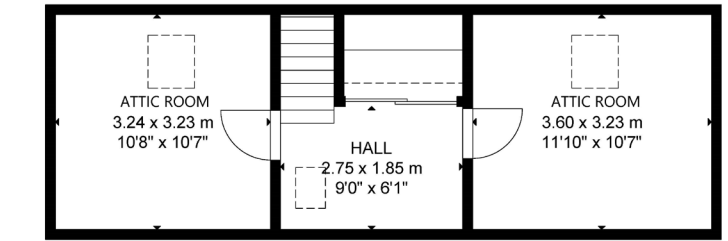
One of the first houses to be built in the village, this charming stone built cottage retains an array of original features and sits proudly in a fantastic plot with beautiful garden grounds and views to the surrounding countryside and across to Ben Lomond.

Whilst requiring upgrading and modernisation, this delightful home offers all on the level accommodation comprising; entrance hallway, two, excellently proportioned, front facing, bay windowed rooms, one of which is currently utilised as bedroom and formal lounge, a further bedroom, a well-proportioned, dual aspect kitchen with excellent storage and original Aga cooker which warms the home and a contemporary shower room completes the accommodation on offer. Upstairs, there are two good-sized attic rooms which are flooded by natural light via Velux windows.

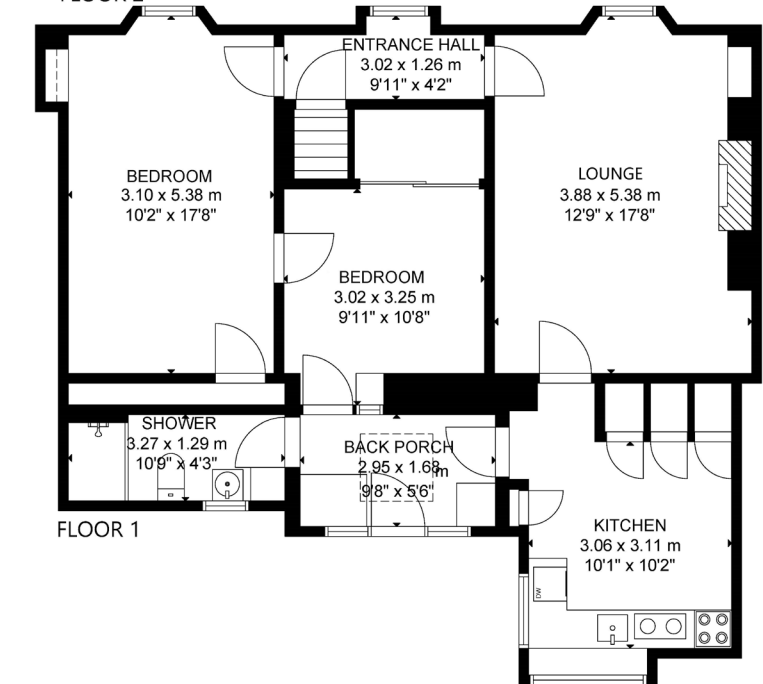








FLOOR 2



FLOOR 1

Gartocharn is situated within the Loch Lomond and Trossachs National Park, yet is within only 40 minutes drive of Glasgow city centre and 30 minutes from Glasgow International Airport. The world renowned Loch Lomond Golf Club, venue for The Scottish Open, is ten and a half miles away on the Westerly side of Loch Lomond with two other golf courses nearby at Drymen. There's a variety of water sports available on the loch and the whole area provides outstanding country and hill walks.

Within Gartocharn there is a village store, an excellent school and a restaurant/bar. Neighbouring Drymen and Balloch provide further amenities with Drymen's Buchanan Arms hotel having a leisure club with swimming pool and the 5* Cameron House Hotel and Country Club with its leisure complex together with a wonderful golf course and spa at The Carrick are both just beyond Balloch.

BD3429 | Sat Nav: Clifton, Main Street, Gartocharn, G83 8RX

For the full home report visit **www.corumproperty.co.uk**

* All measurements and distances are approximate Floorplans are for illustration purposes and may not be to scale.



WE'RE **SOLD** ON
YOUR FUTURE



Corum Bearsden
4 Canniesburn Toll, Bearsden, G61 2QU

Tel: 0141 942 5888

Email: sales@corumproperty.co.uk

www.corumproperty.co.uk