



2 WOOD PLACE

BLANEFIELD

www.corumproperty.co.uk



- 1 | BEDROOM
- 1 | BATHROOM
- 1 | PUBLIC ROOM

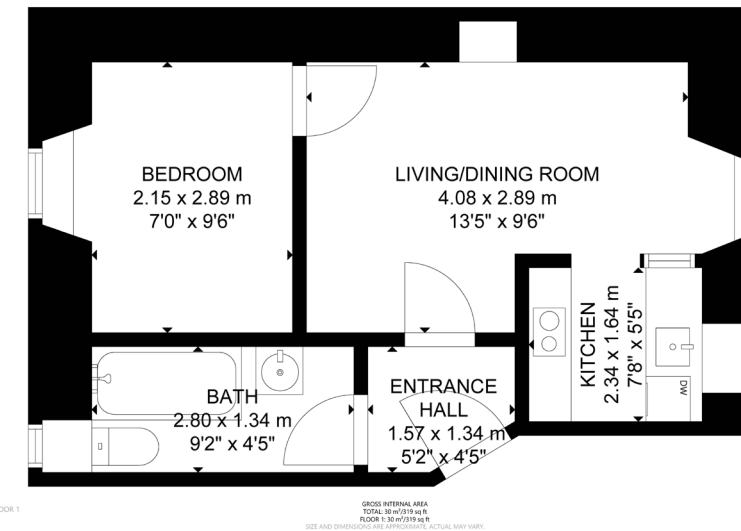
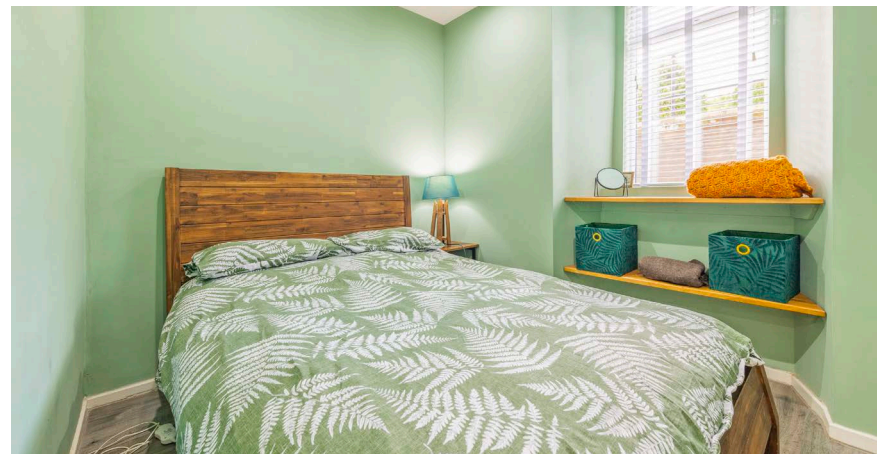
Set within a small cul-de-sac, close to the heart of both Blanefield and Strathblane, this cosy, one bedroom, ground floor flat, is likely to appeal to first time buyers, downsizers and investors alike.

The property is initially entered via a communal entranceway, shared with only one other flat. The accommodation on offer extends to:- entrance hallway, charming living/dining room, with kitchenette off, bedroom and bathroom, with three piece suite.

Outside, there are small areas of garden ground at the front of the flat, which are hard landscaped. There is also residents' parking.

Amenities

The villages of Strathblane and Blanefield are well served by local amenities. The village itself offers an excellent range of amenities including a GP practice / health centre, restaurants, hotels and village pub. There is a Spar, Co-Op, and a number of other independent stores. For clients who enjoy the outdoors, the villages are located in the foot hills of the Campsie Fells and there are many pleasant walks to be enjoyed, especially at nearby Mugdock Country Park. There is also excellent access to The West Highland Way.



Sat Nav:
2 Wood Place, Blanefield, G63 9HZ

BD3431

*All measurements and distances are approximate. Floorplans are for illustration purposes and may not be to scale.

For the full home report visit
www.corumproperty.co.uk



WE'RE **SOLD** ON
YOUR FUTURE


C O R U M

Corum Bearsden
4 Canniesburn Toll, Bearsden, G61 2QU

Tel: 0141 942 5888

Email: sales@corumproperty.co.uk

www.corumproperty.co.uk