



## **PLOT 2, REDGATE**

MAUCHLINE

[www.corumproperty.co.uk](http://www.corumproperty.co.uk)





A fantastic plot extending to around 1510 square metres, with a stunning rural setting between the Burn O’Need and the Cessnock Water and close to the popular village of Sorn and the bustling town of Mauchline.

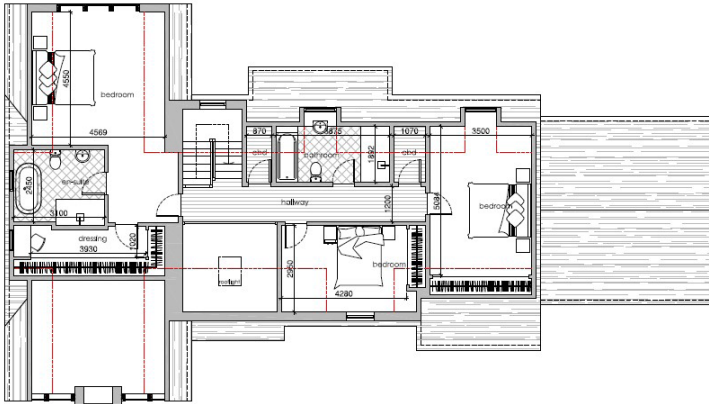
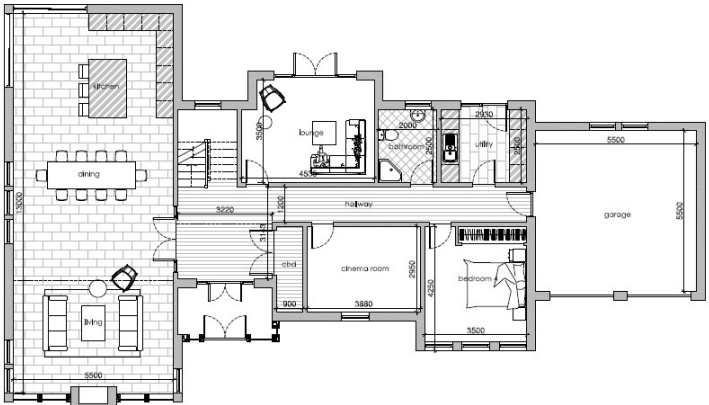
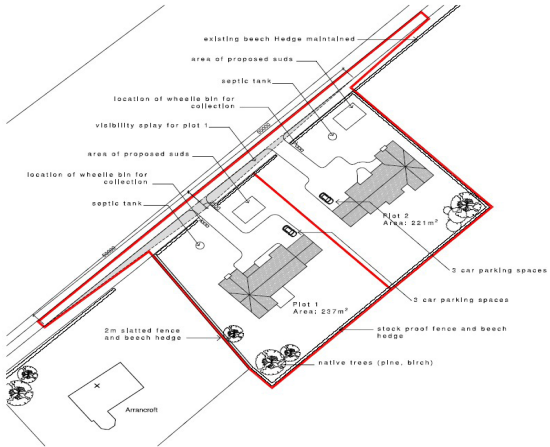
Redgate is set just off the B743, between the popular town of Mauchline and the picturesque village of Sorn. Surrounded by open country views, the small hamlet of luxury homes is set between the Burn O’Need and the Cessnock Water and offers swift commuting to Glasgow via the A76/M77 road network or via Galston.

Plot 2 extends to around 1510 square metres and is set adjacent to open countryside with a south-east facing aspect to the rear. There is planning permission for a one and a half storey four bedroom detached home, with a range of executive features designed by renowned local architect firm ‘Thomas Hunter Architects’.

This plot offers an excellent opportunity to build a wonderful executive home in a stunning setting close to local amenities.

Amenities

Mauchline is a popular town, steeped in history with links to Scotland’s National Bard, Rabbin Burns. There are number of local amenities, including local shops and a primary school, while a more comprehensive range of amenities can be found in the market town of Kilmarnock, where there are also excellent transport links to Glasgow and surrounding districts.



Sat Nav:  
Plot 2, Redgate, Mauchline, KA5 6HL

TR1550

\*All measurements and distances are approximate.  
Floorplans are for illustration purposes and may not be to scale.

For the full home report visit  
[www.corumproperty.co.uk](http://www.corumproperty.co.uk)



FRONT ELEVATION  
SCALE 1/100



REAR ELEVATION  
SCALE 1/100

WE'RE **SOLD** ON  
YOUR FUTURE



Corum Troon  
29 Portland Street, Troon, KA10 6AA

**Tel:** 01292 310 010

**Email:** [troon@corumproperty.co.uk](mailto:troon@corumproperty.co.uk)

[www.corumproperty.co.uk](http://www.corumproperty.co.uk)