



**FLAT 2/1, 5 MILLBRAE CRESCENT**

LANGSIDE

[www.corumproperty.co.uk](http://www.corumproperty.co.uk)







3 | BEDROOMS

2 | BATHROOMS

1 | PUBLIC ROOM

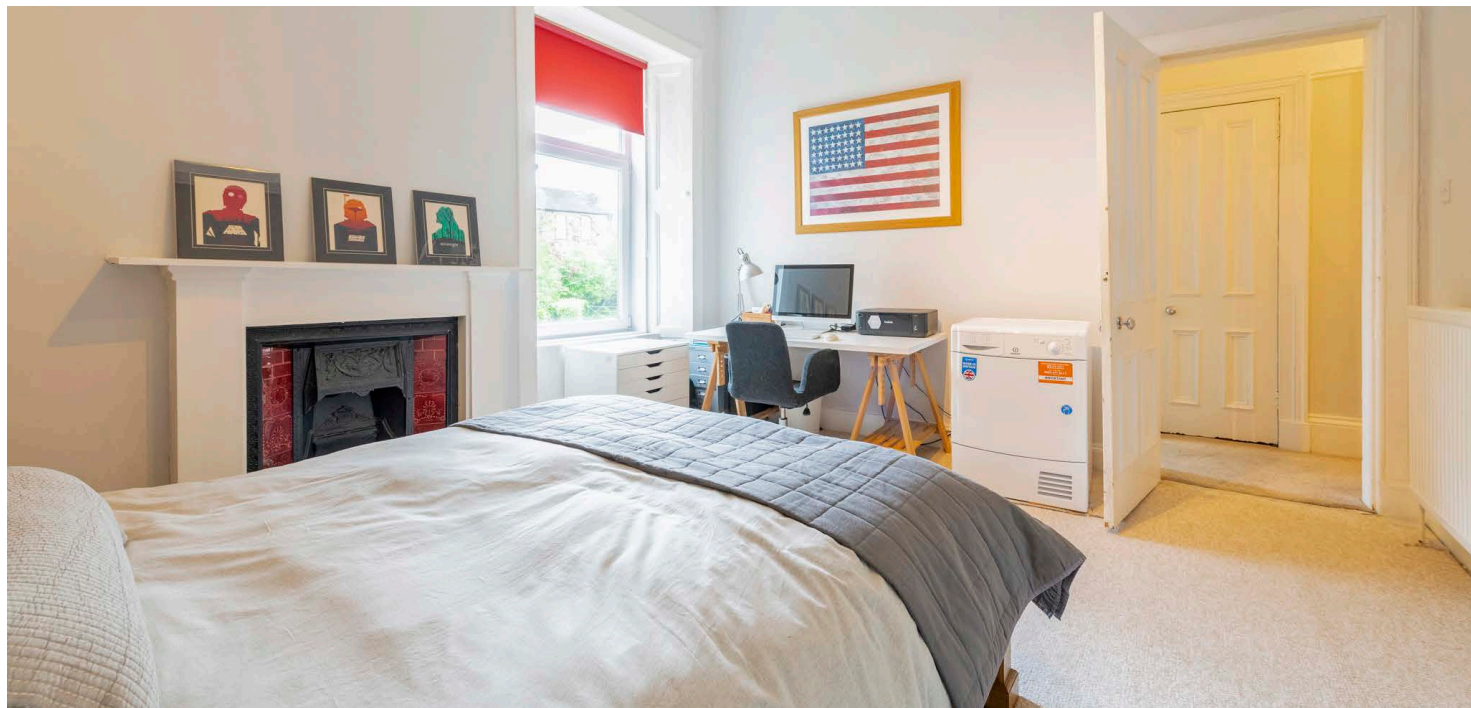
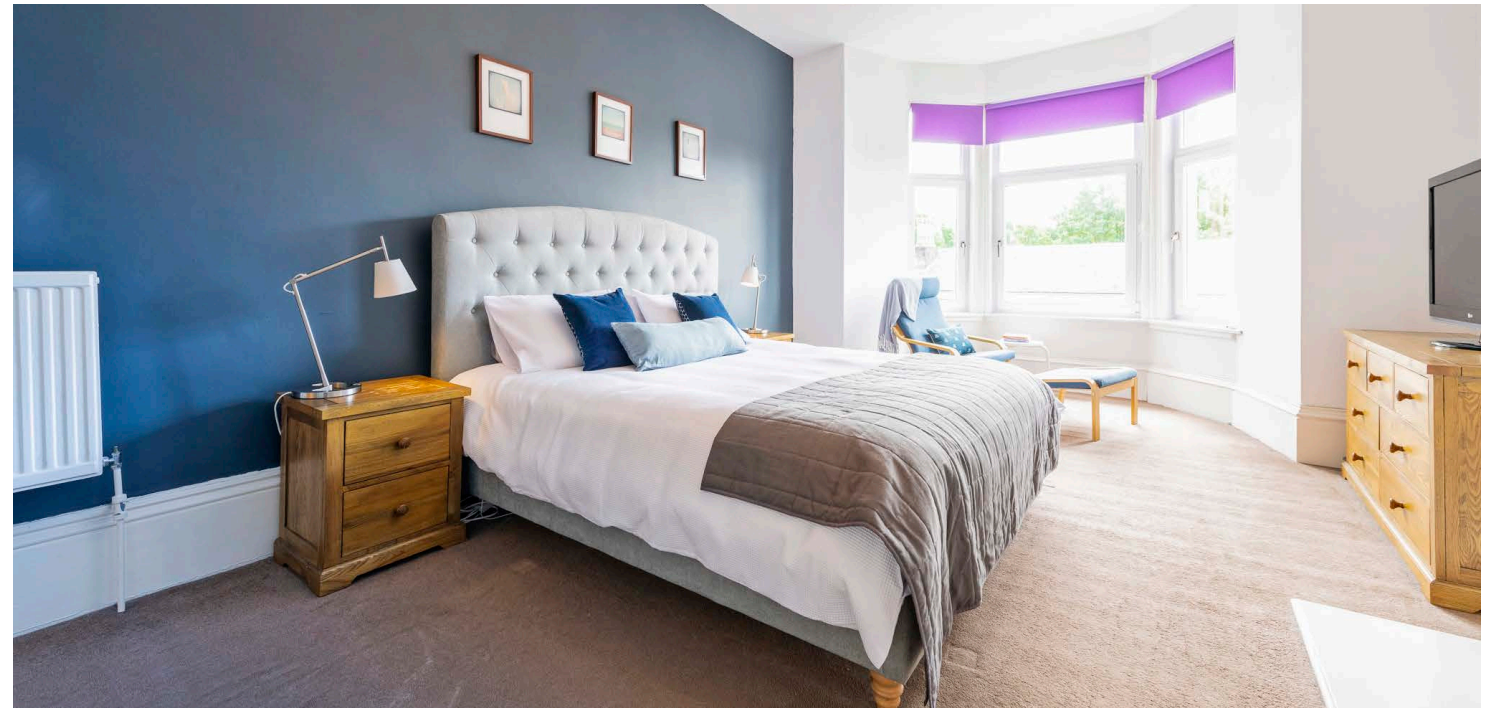
**A particularly bright top floor townflat with outstanding privacy in the Millbrae conservation area of Langside.**

Set within the Millbrae conservation area and presented to market in excellent order, this full three bedroom townflat sits in a maintained sandstone building.

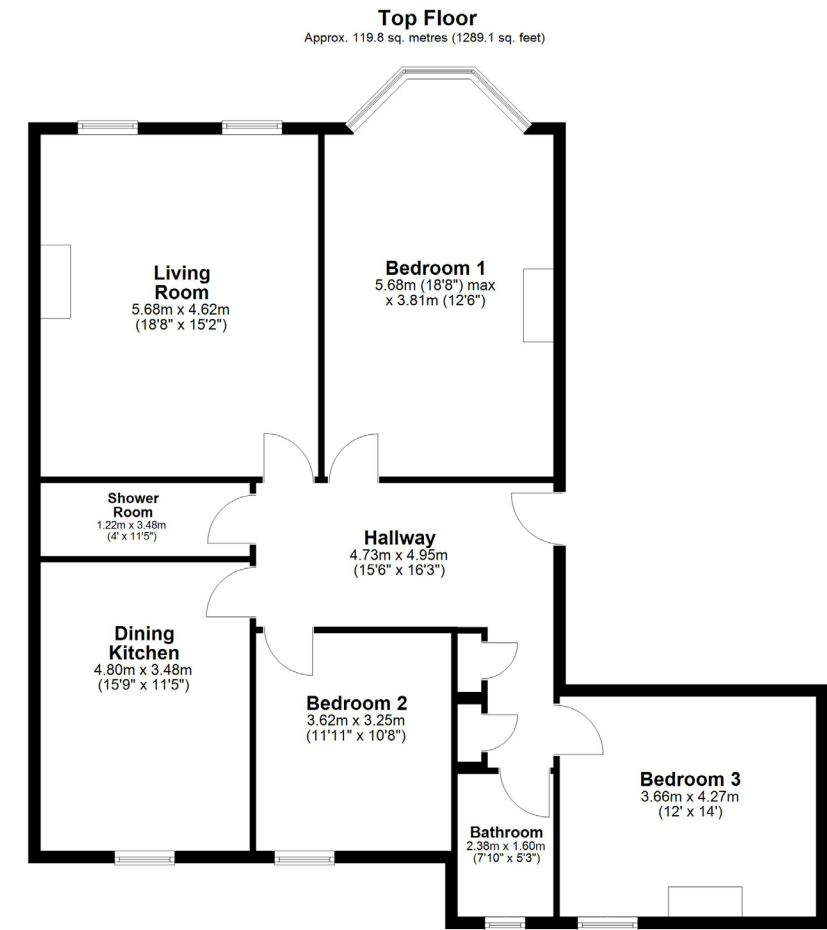
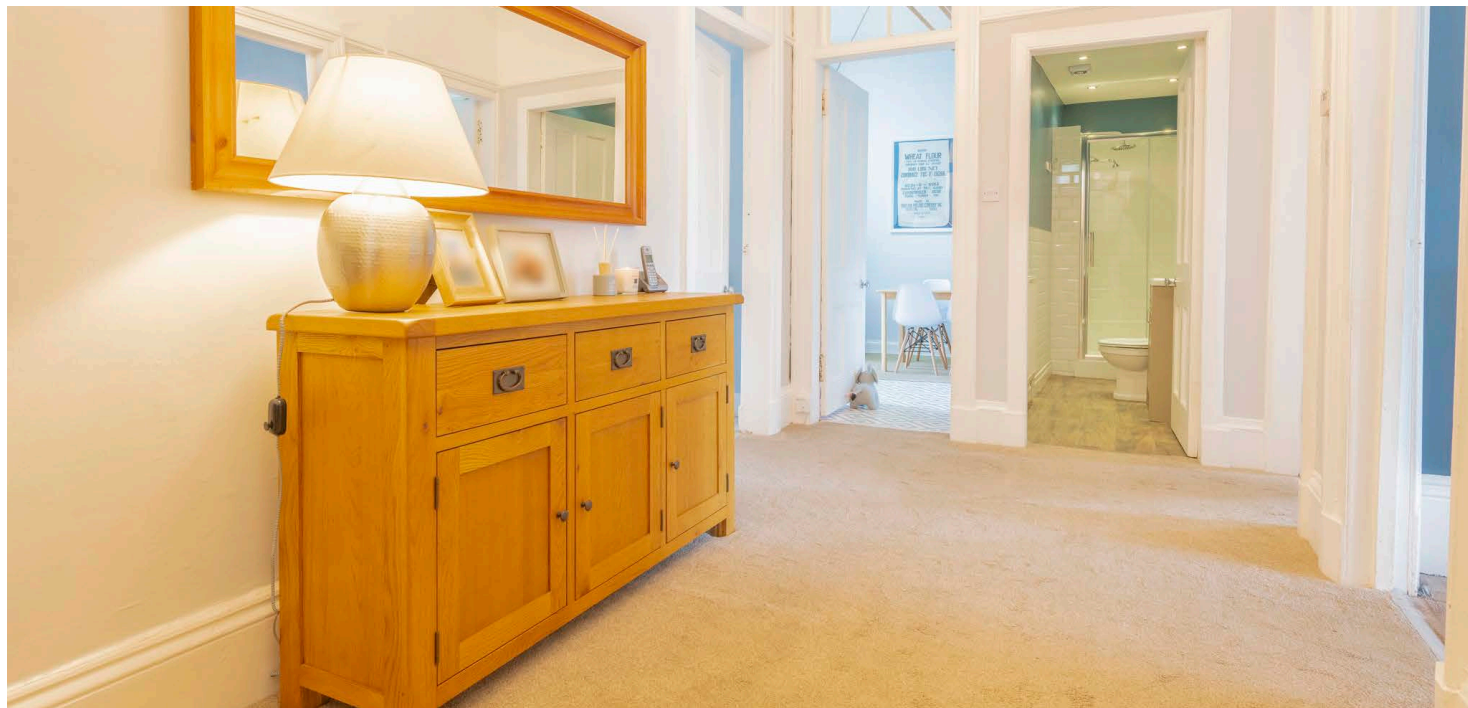
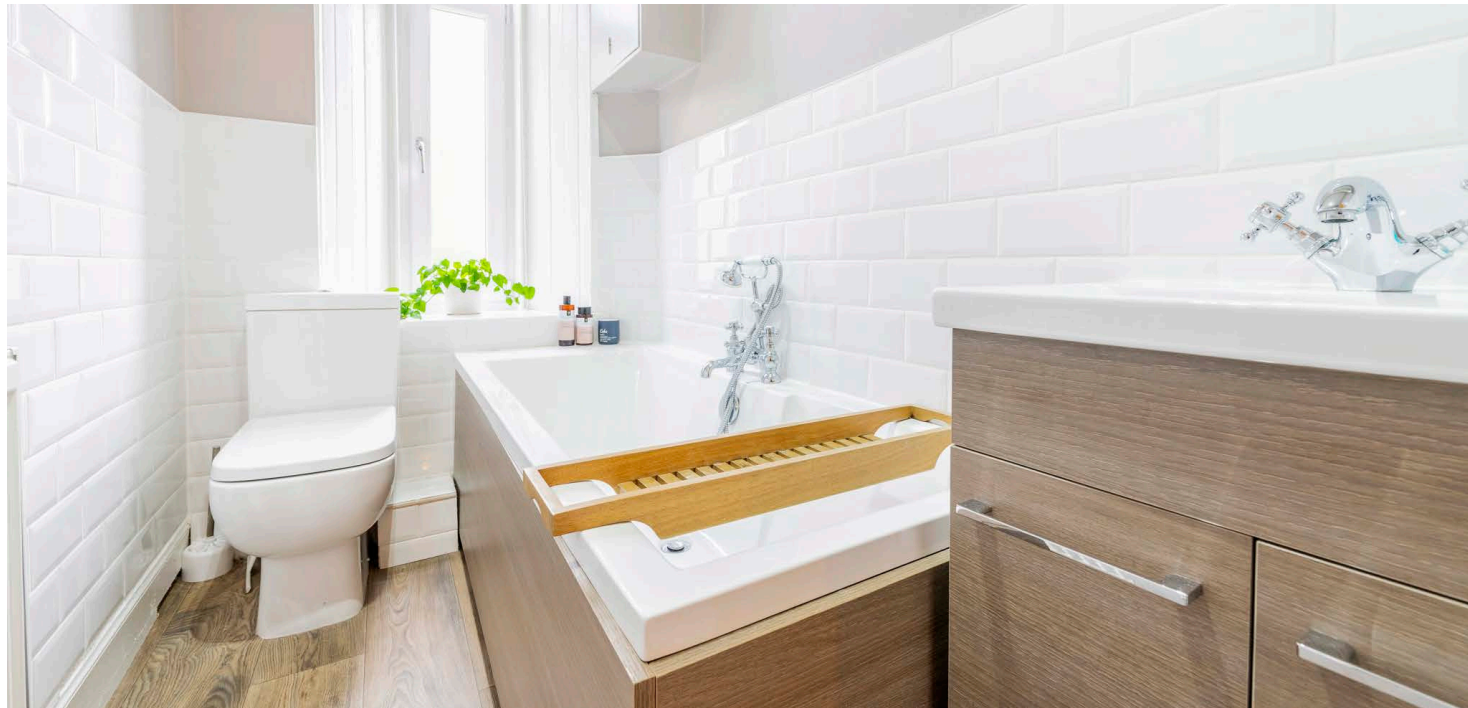
The accommodation includes; resident's stairwell to second floor, reception hall with storage cupboards adjacent and a comfortable living room including decorative fire surround. There are three versatile double bedrooms (two with decorative fireplaces), a three piece bathroom suite and a separate shower room/WC. A fitted dining kitchen to the rear of the building has floor/wall mounted units and ample space for table/chairs as well as a useful ceiling pulley.

The specification delivers gas central heating, double glazed windows and an audio door entry system. To the rear of the terrace is a communal garden providing drying green and bin storage. The building is factored by Hacking & Paterson of 1 Newton Terrace in Glasgow.









Total area: approx. 119.8 sq. metres (1289.1 sq. feet)

5 Millbrae Crescent is within walking distance of an abundance of amenities whilst Newlands Park and Queens Park are within one mile of the front door. The local railway station at Langside is on the Cathcart Circle line, a 5 stop journey into Central Station. The M77 and M74 both connect the Southside of Glasgow to Scotland's motorway network.

SS4192 | Sat Nav: Flat 2/1, 5 Millbrae Crescent, Langside, G42 9UW

For the full home report visit [www.corumproperty.co.uk](http://www.corumproperty.co.uk)

\* All measurements and distances are approximate Floorplans are for illustration purposes and may not be to scale.





WE'RE **SOLD** ON  
YOUR FUTURE



Corum Shawlands  
247 Kilmarnock Road, Shawlands, G41 3JF

**Tel:** 0141 636 7588

**Email:** [shawlands@corumproperty.co.uk](mailto:shawlands@corumproperty.co.uk)

[www.corumproperty.co.uk](http://www.corumproperty.co.uk)