



50A MARYWOOD SQUARE

STRATHBUNGO

www.corumproperty.co.uk


c o r u m

- 1 | BEDROOM
- 1 | BATHROOM
- 1 | PUBLIC ROOM

This well-proportioned townhouse conversion in Strathbungo has its own strip of South West facing garden.

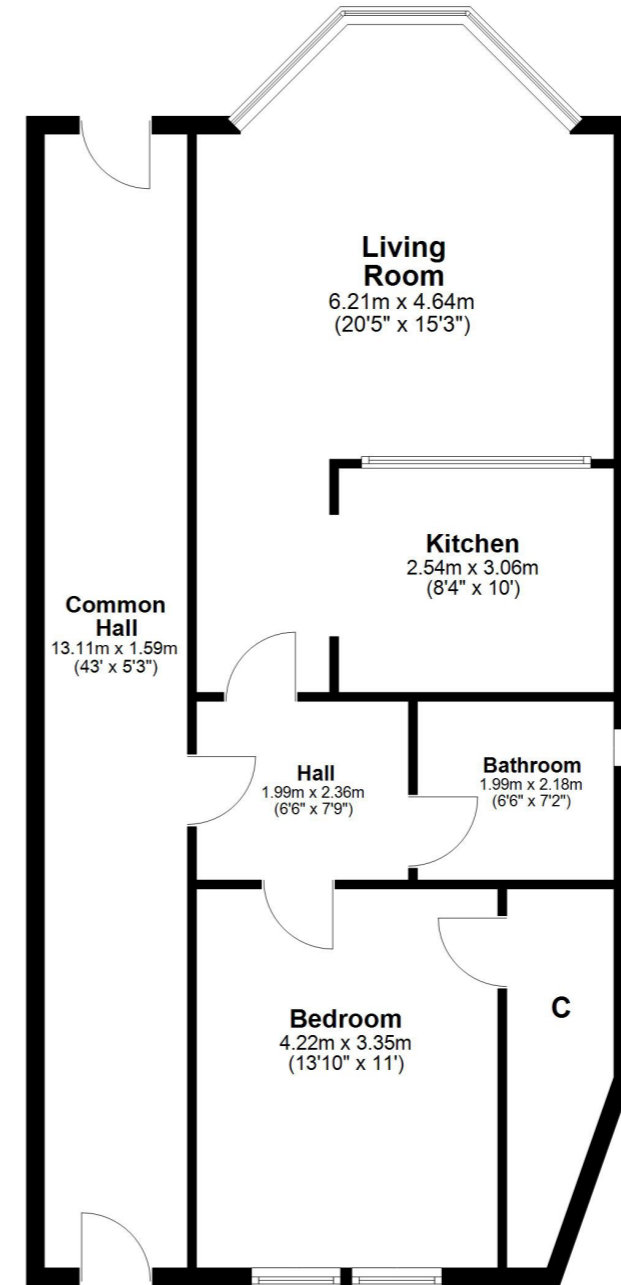
Positioned at garden level in an end of terrace townhouse, this lovely conversion is found in the Strathbungo conservation district. The building was split some years ago to house four dwellings on the doorstep of numerous amenities and regular public transport options.

Access is gained via a common hallway shared with one other flat. The property has its own entrance hall, a bay windowed living room open plan to a professionally fitted kitchen, a three piece bathroom suite (shower over the tub) and a double sized bedroom with a convenient walk-in cupboard. The living room window has working wooden shutters aiding privacy and a storage cupboard in the common hallway belongs to the property for sale. It is also worthy to note that there are entry doors (both private) at the front and the rear of the property.

The specification includes gas central heating, double glazing (except the bathroom) and neutral/tasteful décor. A section of the front garden belongs to the flat for sale and provides a terrific space for prolonged sunny periods in the summer months. To the rear of the building is an area reserved for parking accessed via the lane behind the terrace.



Garden Floor
Approx. 80.8 sq. metres (869.4 sq. feet)



Total area: approx. 80.8 sq. metres (869.4 sq. feet)

Sat Nav:
50A Marywood Square, Strathbungo, G41 2BJ
SS4193

*All measurements and distances are approximate. Floorplans are for illustration purposes and may not be to scale.

For the full home report visit www.corumproperty.co.uk



WE'RE **SOLD** ON
YOUR FUTURE



Corum Shawlands
247 Kilmarnock Road, Shawlands, G41 3JF

Tel: 0141 636 7588

Email: shawlands@corumproperty.co.uk

www.corumproperty.co.uk