



**1/2, 108 CAMPHILL AVENUE**

LANGSIDE

[www.corumproperty.co.uk](http://www.corumproperty.co.uk)



**c o r u m**

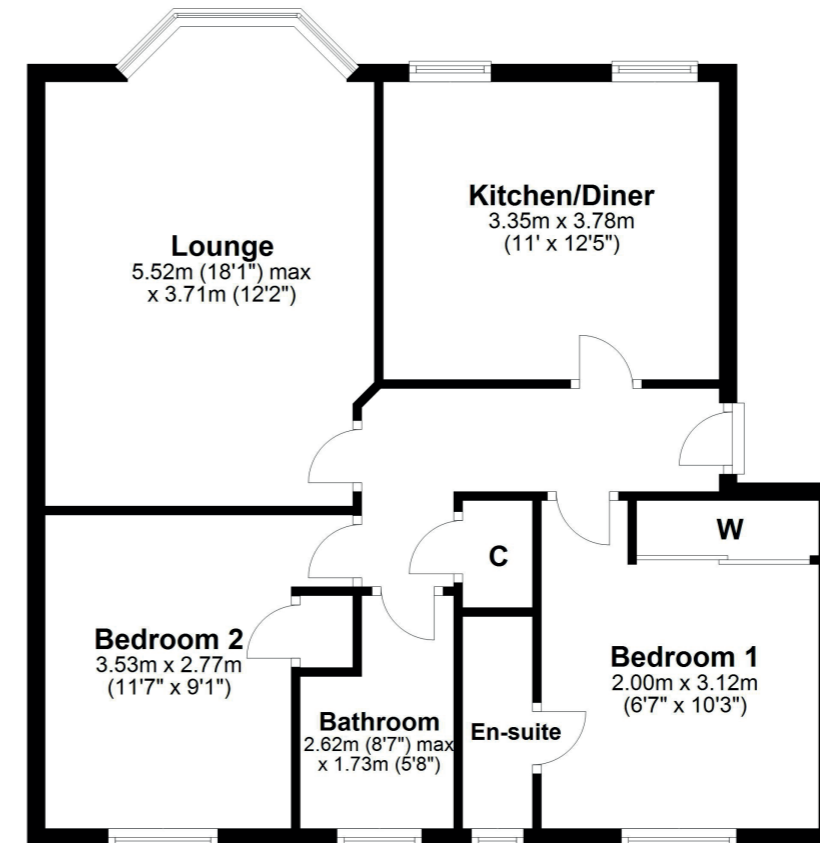
2 | BEDROOMS  
2 | BATHROOMS  
1 | PUBLIC ROOM

Occupying a first floor position in this desirable modern development, this flat offers good proportions, modern specification and private garage to the rear.

- Popular Southside address
- Modern development
- Large lounge and dining kitchen
- 2 double bedrooms
- Bathroom and En-suite shower room
- GCH, DG, secure entry system
- Residents parking to rear and private garage

#### Amenities

108 Camphill Avenue is within one mile of popular shops, bars, coffee houses, bakeries, and restaurants. A Morrisons, Co-op, Tesco and an M&S store are within one mile of the property. Queens Park hosts recreational space; tennis courts and football pitches are readily available. Shawlands Civic Square is also nearby, designed to offer a destination for markets, dance, craft events, speakers, and debate.



Sat Nav:  
108 Camphill Avenue, Langside, G41 3DU

SS4200

\*All measurements and distances are approximate. Floorplans are for illustration purposes and may not be to scale.

For the full home report visit  
[www.corumproperty.co.uk](http://www.corumproperty.co.uk)



WE'RE **SOLD** ON  
YOUR FUTURE



Corum Shawlands  
247 Kilmarnock Road, Shawlands, G41 3JF

**Tel:** 0141 636 7588

**Email:** [shawlands@corumproperty.co.uk](mailto:shawlands@corumproperty.co.uk)

[www.corumproperty.co.uk](http://www.corumproperty.co.uk)