



**152 QUEEN DRIVE**

BARASSIE

[www.corumproperty.co.uk](http://www.corumproperty.co.uk)



c o r u m



2 | BEDROOMS

1 | BATHROOM

1 | PUBLIC ROOM

**An impressive executive first floor apartment nestled within a popular residential area of Barassie, with south-facing communal gardens, resident's parking and close to mainline rail links and the seafront.**

Queens Drive is a popular and quiet residential area of Barassie, close to the amenities of Troon town centre, first class golf courses, the seafront and rail links to Glasgow City Centre. Number 152 is a fantastic upper apartment that is presented to the market in truly walk-in condition throughout, with neutral decor and modern fixtures and fittings. There is ample storage, including loft access and built-in wardrobes in both double bedrooms. The immaculate interior is complimented by a communal low-maintenance rear garden and resident's parking to the front.

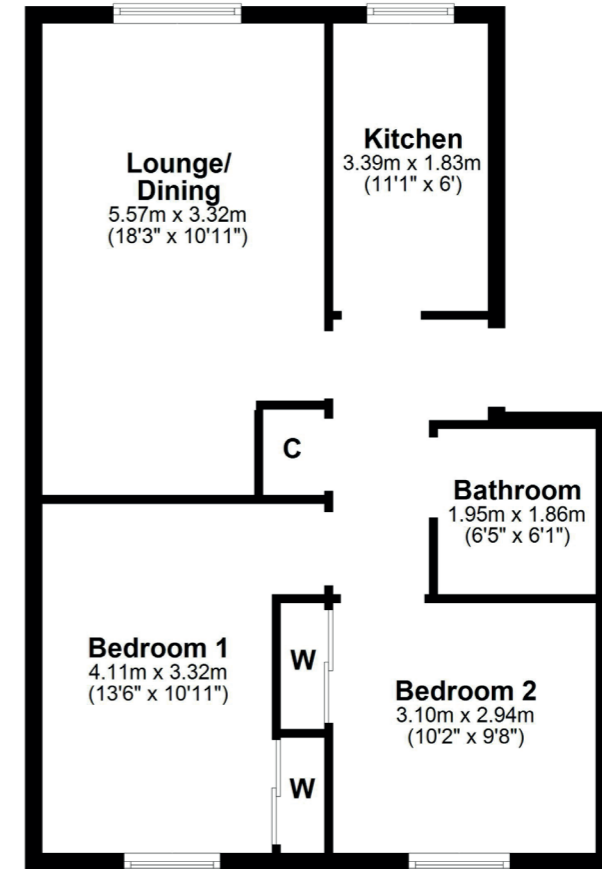
In more detail, the internal accommodation extends to an entrance hallway with loft access and a storage cupboard, a spacious lounge with space for dining, a modern fitted kitchen, a family bathroom suite with a shower over the bath and two double bedrooms, both with fitted wardrobes.

Externally the front of the property is laid mainly with monoblock for allocated parking, with paved pathways. The rear garden is south-facing and laid mainly with lawn. There is excellent privacy with mature trees and open green space at the rear.





### Floor Plan



Queens Drive is a virtually traffic free residential address comprising of similarly styled modern properties within close proximity to Barassie railway station and Golf Club. This is a highly sought after locale close to the seafront and around 1.5 miles from Troon town centre, which provides a more comprehensive range of amenities including supermarket and retail shopping.

TR1565 | Sat Nav: 152 Queen Drive, Barassie, KA10 6SR

For the full home report visit [www.corumproperty.co.uk](http://www.corumproperty.co.uk)

\* All measurements and distances are approximate Floorplans are for illustration purposes and may not be to scale.



WE'RE **SOLD** ON  
YOUR FUTURE



Corum Troon  
29 Portland Street, Troon, KA10 6AA

Tel: 01292 310 010

Email: [troon@corumproperty.co.uk](mailto:troon@corumproperty.co.uk)

[www.corumproperty.co.uk](http://www.corumproperty.co.uk)