



2/1 48 CECIL STREET
HILLHEAD

www.corumproperty.co.uk


c o r u m



2 | BEDROOMS

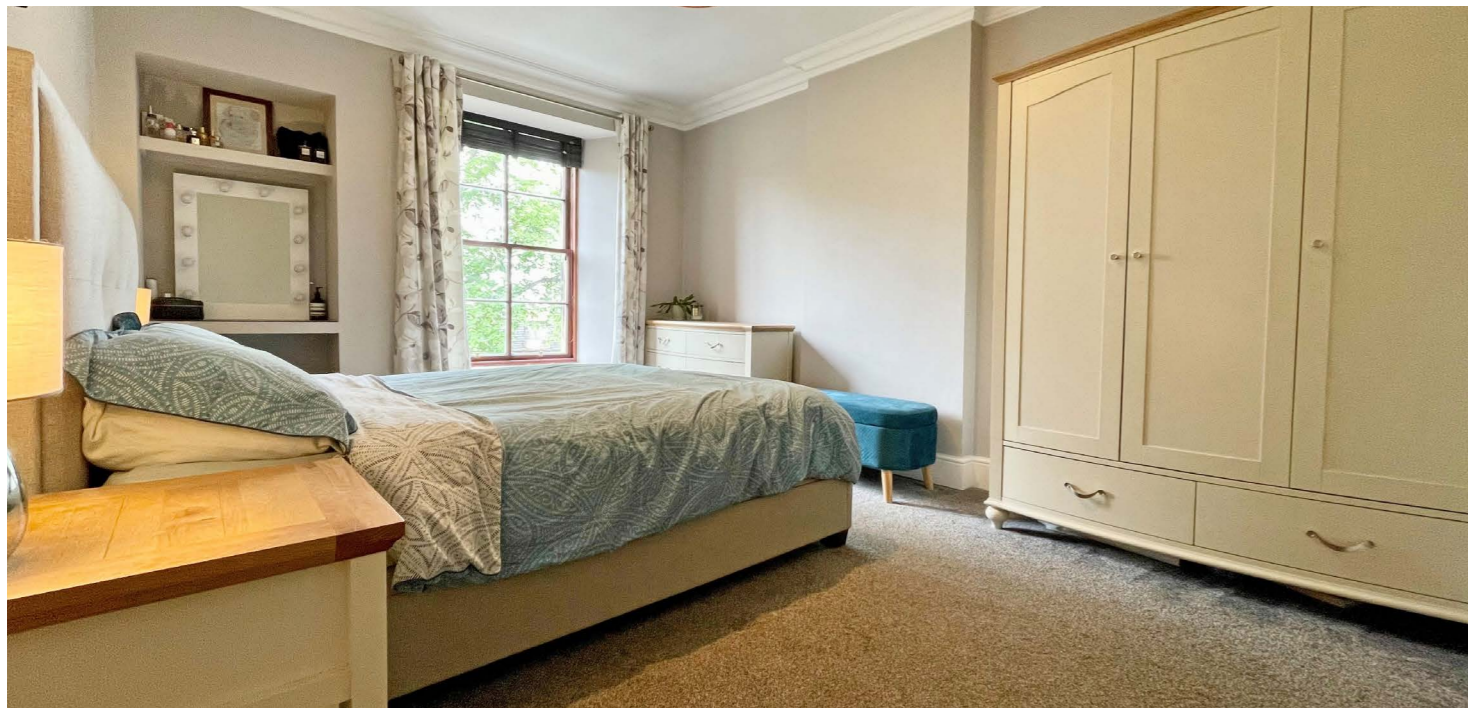
1 | BATHROOM

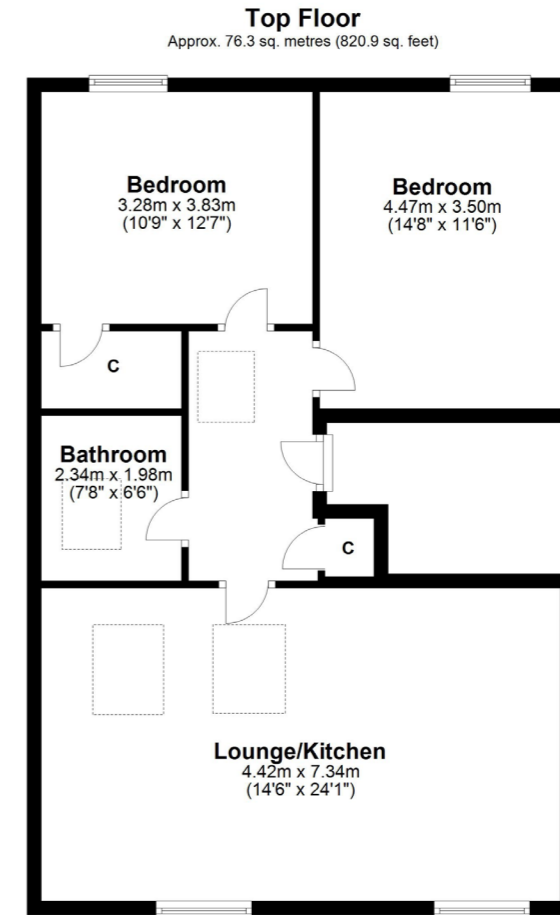
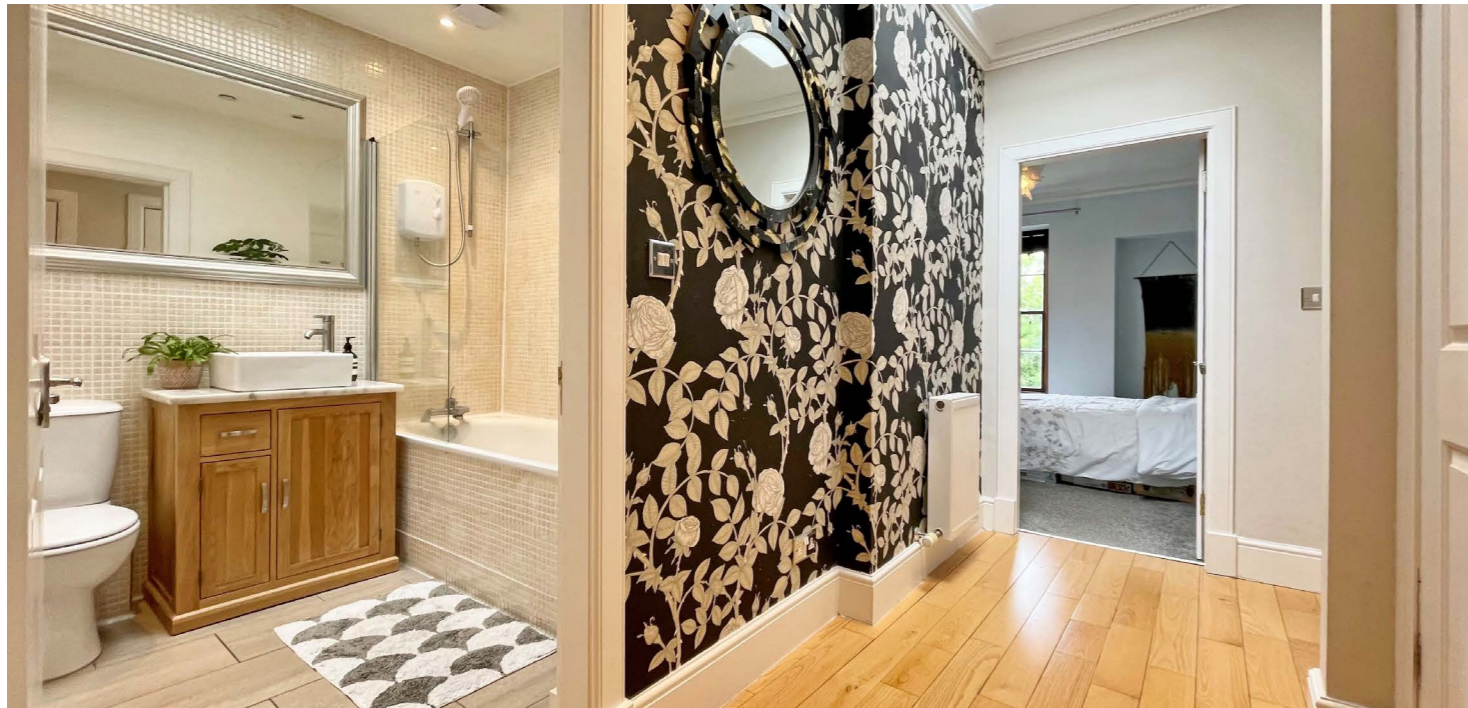
1 | PUBLIC ROOM

Occupying the entire top floor at 48 Cecil Street is this superb two bedroom flat in a townhouse conversion in the highly sought after Hillhead area, with private parking to the rear. The property is initially accessed via a secure entry system leading to a well-kept residents' communal hall.

The internal accommodation comprises; welcoming reception hall with storage cupboard off and a fantastic, spacious open plan lounge and recently installed Wren kitchen, ideal for entertaining, and further enhanced with skylights flooding the room with natural light. There are two excellent sized double bedrooms, one with built in storage, and a modern family bathroom with over bath shower. The bathroom and hall also benefit from skylights.

The flat has gas central heating, a secure entry system, well-kept communal rear gardens, and as previously mentioned, a private parking space to the rear of the building. On street permit parking is also available via request from Glasgow City Council.





Total area: approx. 76.3 sq. metres (820.9 sq. feet)

Hillhead is centrally located within the West End, close to Glasgow University. The main street, Byres Road, offers a wide selection of shops, cafés and supermarkets including Tesco Metro, Marks & Spencer and Waitrose. The famous Ashton Lane is situated just off Byres Road offering various bars, restaurants and the Grosvenor Cinema.

The recently refurbished Hillhead Underground on Byres Road provides swift access to Glasgow City Centre and regular bus services operate on Byres Road and Great Western Road. There are also good road links to the motorway network and Glasgow International Airport. Glasgow University is situated on University Avenue and provides world class further education. The location is extremely popular for students, first time buyers and young professionals.

WE4620 | Sat Nav: 2/1 48 Cecil Street, Hillhead, Glasgow, G12 8RJ

For the full home report visit www.corumproperty.co.uk

* All measurements and distances are approximate Floorplans are for illustration purposes and may not be to scale.



WE'RE **SOLD** ON
YOUR FUTURE



Corum West End
82 Hyndland Road, Glasgow, G12 9UT

Tel: 0141 357 1888

Email: westendenq@corumproperty.co.uk

www.corumproperty.co.uk