



6 PENCIL VIEW

LARGS

www.corumproperty.co.uk





2 | BEDROOMS

2 | BATHROOMS

3 | PUBLIC ROOMS

Number 6 Pencil View sits within an exclusive residential cul de sac on the south side of the popular coastal town of Largs, enjoying close proximity to Kelburn Castle and Largs Golf Course.

This generously proportioned all on the level detached bungalow has two bedrooms, three public rooms and early viewing is recommended as these types of property, in this location, are rarely available in this current market.

Set within easily maintained garden grounds, with a large pavior driveway to the side, leading to a detached garage, the internal accommodation comprises; an entrance porch, a reception hall with two storage cupboards, a spacious lounge with a semi open plan dining room complete with two sets of French doors that open to both the lounge and the conservatory, a fitted kitchen with plenty of space for a dining table and chairs has integrated appliances and a doorway leading through to the aforementioned conservatory. The generous conservatory is a lovely place to sit and relax in offering plenty of space for a suite, a table and chairs and comes with fitted blinds. There are two double sized bedrooms, both with fitted wardrobes, the master bedroom has an en suite shower room complete with walk in shower. The family bathroom has a three-piece suite, shower over bath.

There is a large loft hatch with ladder which provides excellent internal storage space.

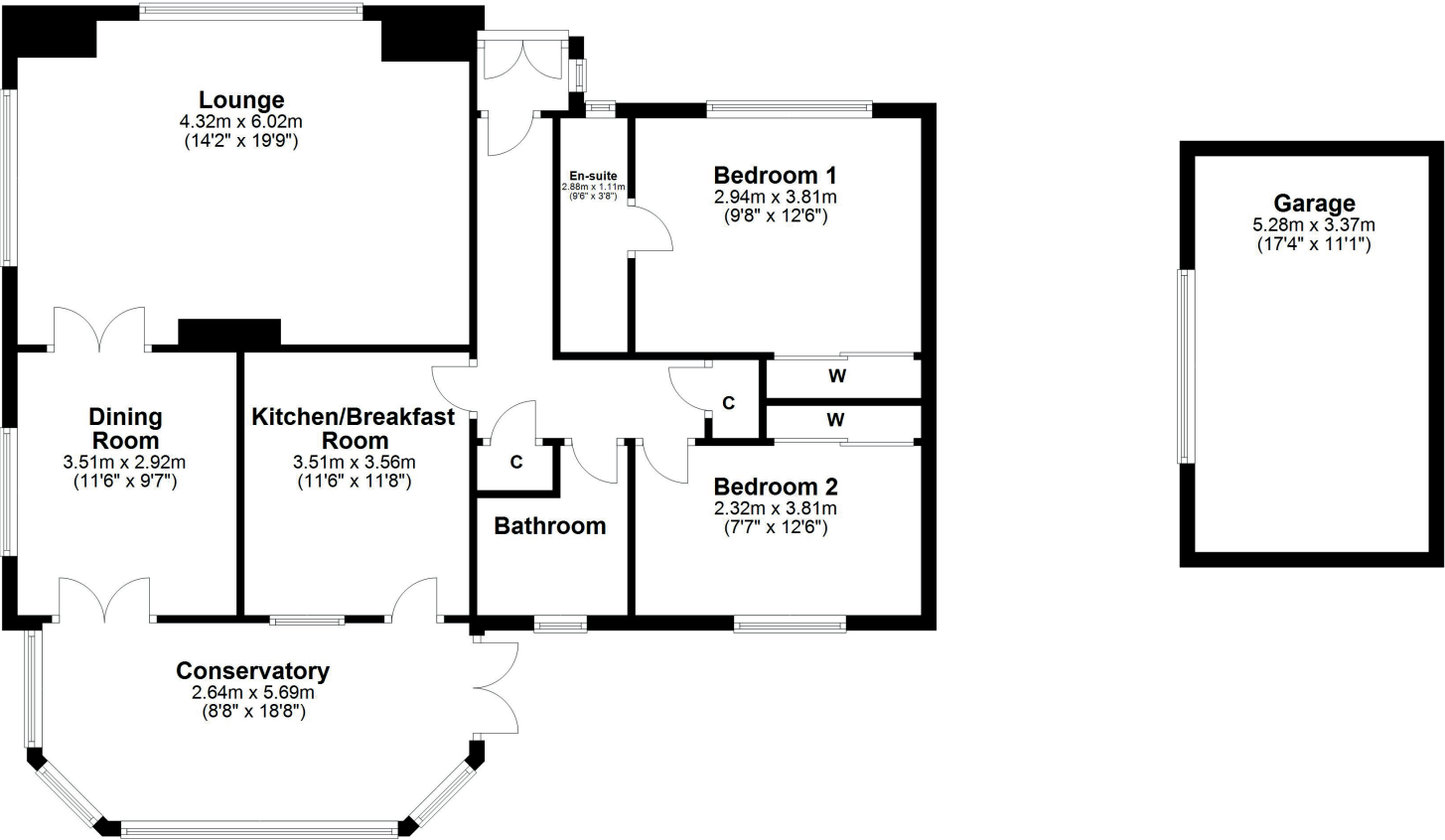
The rear landscaped gardens are fully enclosed and are an absolute delight; suitable for al fresco dining and spring/summer BBQs in the sunshine.

The present owners have created a versatile and impressive home, just ready to be moved into and enjoyed, with generous sized rooms throughout and plenty of storage, in a first-class address.









Largs is a popular holiday destination and is becoming increasingly popular for those looking for a seaside home in a town with a good range of amenities and recreational facilities. The Largs Academy Campus (built 2018) incorporates Early Years Learning, Largs Primary and St Mary's Primary as well as the highly regarded Largs Academy. Inverclyde, Scotland's National Sport's centre has also recently been refurbished. The area has excellent travel links including Largs railway station, bus routes and easy access to the major road networks. There are many restaurants and hotels in the area, with the yacht marina and seafront being an attraction for many. Prestwick and Glasgow Airport offer regular flights throughout Britain, Ireland and Europe.

LA1821 | Sat Nav: 6 Pencil View, Largs, KA30 8JZ

For the full home report visit www.corumproperty.co.uk

* All measurements and distances are approximate Floorplans are for illustration purposes and may not be to scale.



WE'RE **SOLD** ON
YOUR FUTURE



Corum Largs
66 Main Street, Largs, KA30 8AL

Tel: 01475 675 001

Email: largs@corumproperty.co.uk

www.corumproperty.co.uk