

B1, 92 QUEENS DRIVE

QUEEN'S PARK

www.corumproperty.co.uk



2 | BEDROOMS
1 | BATHROOM
1 | PUBLIC ROOM

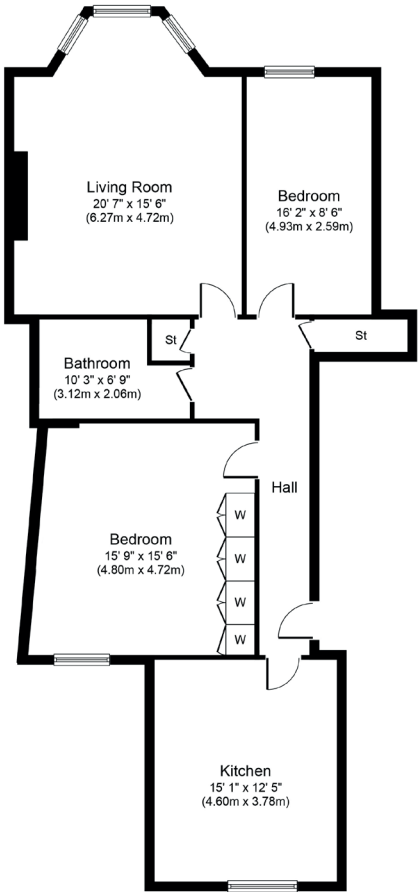
Set on Balmoral Terrace, opposite Queens Park, this garden level flat is sure to appeal to a wide range of buyers.

- Renowned sandstone building
- Garden level townflat
- Impressive room dimensions
- Plentiful storage provision
- Modern fitted dining kitchen
- Excellent local amenities

Amenities

92 Queens Drive is within walking distance of shops and amenities upon Victoria Road or Pollokshaws Road where thriving coffee shops, restaurants, bars, and delicatessens can be found. More extensive amenities are available at the Marks & Spencer store at Queens Park, the Morrison's store at Crossmyloof or the Silverburn Shopping Centre at Pollok.

Recreational pursuits within the area are found across the road at Queens Park including nature trails, all weather football pitches and tennis courts. Regular public transport services (both bus and rail) provide commuter access to the city centre. The local railway station is approximately 300 yards walk from the front door.



Sat Nav:
92 Queens Drive, Queens Park, G42 8BJ

SS4477

*All measurements and distances are approximate.
Floorplans are for illustration purposes and may not be to scale.

For the full home report visit
www.corumproperty.co.uk



WE'RE **SOLD** ON
YOUR FUTURE



Corum Shawlands
247 Kilmarnock Road, Shawlands, G41 3JF

Tel: 0141 636 7588
Email: shawlands@corumproperty.co.uk

www.corumproperty.co.uk