



MENTEITH LODGE

PORT OF MENTEITH

www.corumproperty.co.uk





2 | BEDROOMS

2 | BATHROOMS

1 | PUBLIC ROOM

Menteith Lodge is a fabulous two bedroom country cottage, with handsome stone façade, idyllically situated in the village of Port of Menteith. Built circa. 2006, the property has uninterrupted views to the front over farmland and, to the rear, over a field, towards the Lake of Menteith and its island of Inch-mahome.

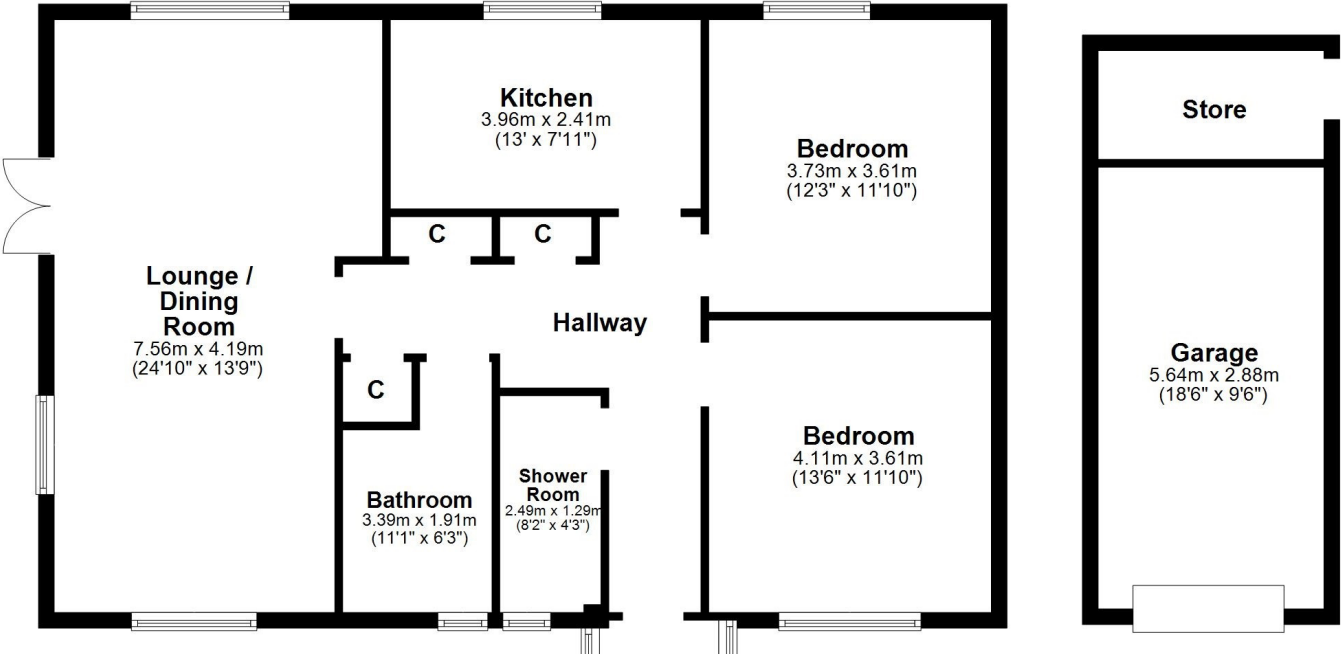
The accommodation comprises:- entrance porch, hallway, with excellent storage, substantial lounge / dining room with French doors onto decking and dining kitchen. There are two well-proportioned double bedrooms, a bathroom and separate wet room. The property benefits from oil central heating, timber framed double glazed windows, mains smoke detectors and an alarm. In addition, there is off street driveway parking and a detached single garage and integral store.

Situated close by the Lake Hotel of the Lake of Menteith and within the Loch Lomond & Trossachs National Park, the property provides a delightful rural escape for those seeking a permanent home, those seeking a holiday home or for those looking to make an investment purchase to lease.









Port of Menteith has its own local primary school, with secondary schooling at McLaren High School in Callander. It is situated just a few miles east of Aberfoyle – the gateway to The Trossachs.

BD3394 | Sat Nav: Menteith Lodge, Port of Menteith, FK8 3RA

For the full home report visit www.corumproperty.co.uk

* All measurements and distances are approximate Floorplans are for illustration purposes and may not be to scale.



WE'RE **SOLD** ON
YOUR FUTURE



Corum Bearsden
4 Canniesburn Toll, Bearsden, G61 2QU

Tel: 0141 942 5888

Email: sales@corumproperty.co.uk

www.corumproperty.co.uk