



61 CASTLEBAY COURT

LARGS

www.corumproperty.co.uk





3 | BEDROOMS

1 | BATHROOM

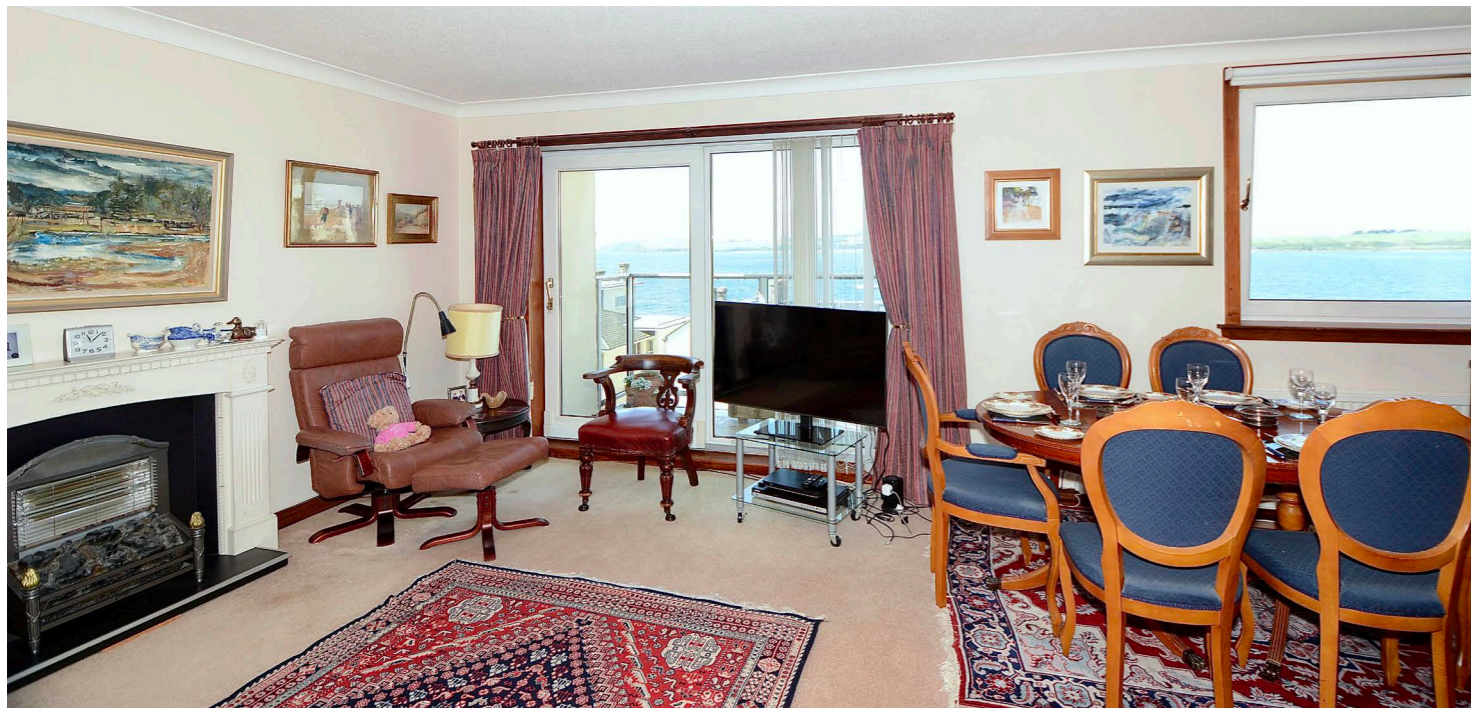
1 | PUBLIC ROOM

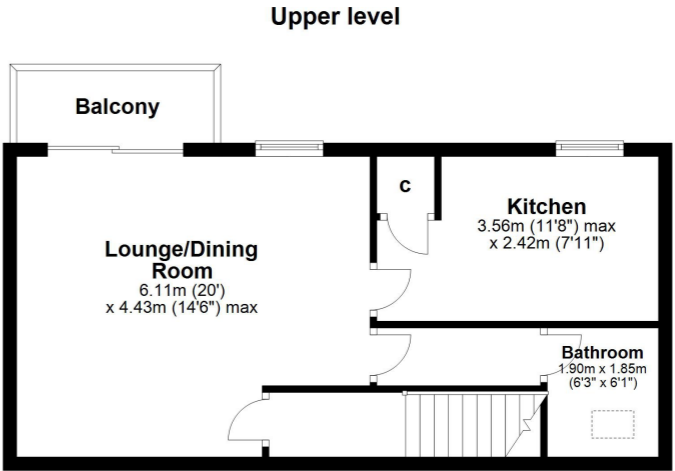
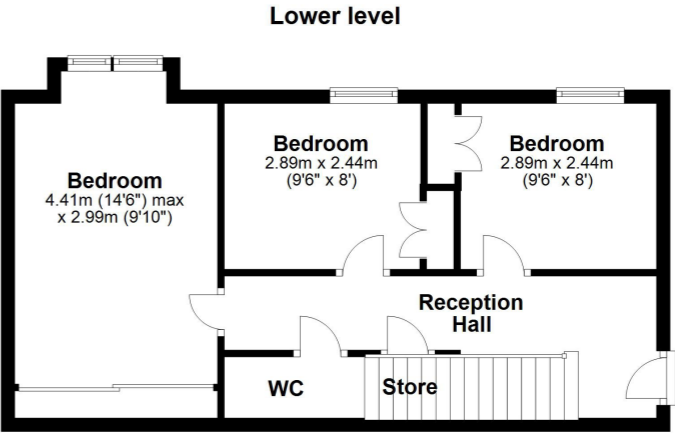
Located in the more recent section of the iconic Castlebay Court development of shoreline apartments and offering fabulous, elevated views of the Firth of Clyde, Cumbrae and Arran in the west from the lounge/dining room, kitchen, external balcony and all bedrooms, 61 Castlebay Court is a spacious duplex apartment which will hold broad appeal. The development itself is close to the waterline and the town centre with its wide range of amenities is within easy reach.

The accommodation comprises a communal entrance hallway entered via secure entry phone system which give both stair and lift access to the apartment.

Upon entering, a lower reception hallway gives access to three bedrooms all with built in wardrobe storage. All the bedrooms enjoy Firth of Clyde views. There is a WC cloakroom and storage cupboard on this level. A stairway gives access to a bright, spacious open plan lounge/dining room. The lounge has a set of sliding patio doors which open to an external balcony with superb, elevated, panoramic Firth of Clyde views. The kitchen is accessed from the dining area and is fitted with a range of wall and base units with free standing cooker, dish washer, fridge/freezer and washing machine that may be included in the sale. The kitchen also enjoys water views. The inner hallway to the rear of the lounge leads into the bathroom.

In addition to the above the property has double glazing, gas central heating, stairlift which may be included in the sale, garage and parking within the grounds of the development.





Largs is a popular holiday destination and is becoming increasingly popular for those looking for a seaside home in a town with a good range of amenities and recreational facilities. The Largs Academy Campus (built 2018) incorporates Early Years Learning, Largs Primary and St Mary's Primary as well as the highly regarded Largs Academy. Inverclyde, Scotland's National Sports centre has also recently been refurbished. The area has excellent travel links including Largs railway station, bus routes and easy access to the major road networks. There are many restaurants and hotels in the area, with the yacht marina and seafront being an attraction for many. Prestwick and Glasgow Airport offer regular flights throughout Britain, Ireland and Europe.

LA1818 | Sat Nav: 61 Castlebay Court, Largs, KA30 8DP

For the full home report visit www.corumproperty.co.uk

* All measurements and distances are approximate Floorplans are for illustration purposes and may not be to scale.



WE'RE **SOLD** ON
YOUR FUTURE



Corum Largs
66 Main Street, Largs, KA30 8AL

Tel: 01475 675 001

Email: largs@corumproperty.co.uk

www.corumproperty.co.uk