



6 ROWANLEA DRIVE

GIFFNOCK

www.corumproperty.co.uk



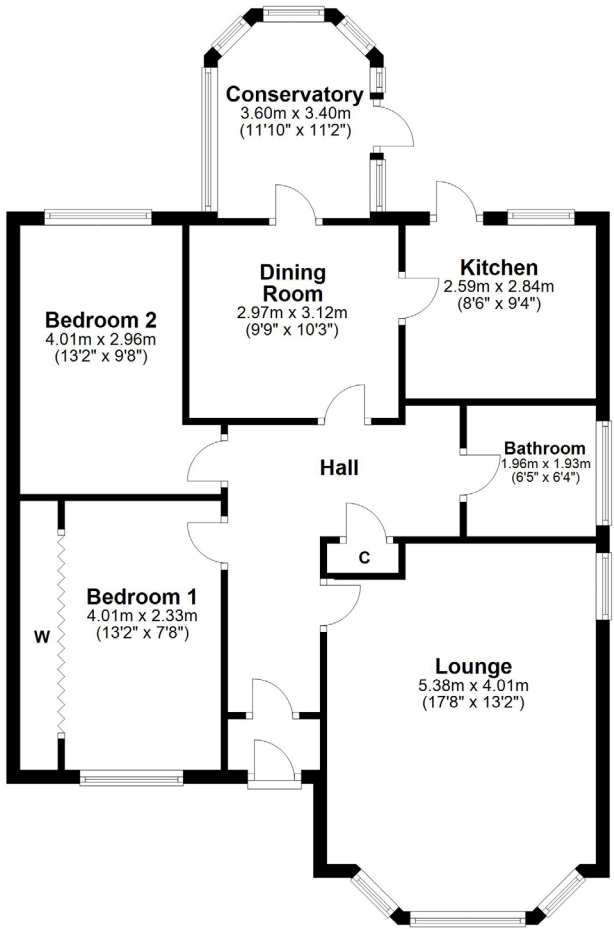
2 | BEDROOMS
1 | BATHROOM
2 | PUBLIC ROOMS

An all on the level detached bungalow set within generous level gardens.

- Fantastic opportunity.
- Flexible accommodation.
- Scope to develop and extend.
- Driveway and garage.
- Generous level garden.
- Excellent school catchment.

Amenities

Giffnock continues to be one of the most desirable residential suburbs on Glasgow's south side. A haven for young growing families, the district is synonymous with some of the best schooling in the West of Scotland. Moreover, there are excellent transport links via bus and train close at hand with Giffnock train station being in close proximity. In addition, there are local motorway links (M77/M8) providing swift access to the city centre and Ayrshire. There are numerous independent shops, restaurants and delicatessens only a short walk away. An abundance of sports and leisure facilities are available within East Renfrewshire including David Lloyd Sports Club, Nuffield Health Gym, Whitecraigs Golf Club, Giffnock and Whitecraigs Tennis Clubs and Rouken Glen Park which was voted UK's Best Park of 2016.



Sat Nav:
6 Rowanlea Drive, Giffnock, G46 6BS

NM4109

*All measurements and distances are approximate.
Floorplans are for illustration purposes and may not be to scale.

For the full home report visit
www.corumproperty.co.uk



WE'RE **SOLD** ON
YOUR FUTURE



Corum Newton Mearns
134 Ayr Road, Newton Mearns, G77 6EG

Tel: 0141 639 5888

Email: n.mearns@corumproperty.co.uk

www.corumproperty.co.uk