



**9 TURNBERRY DRIVE**

NEWTON MEARNs

[www.corumproperty.co.uk](http://www.corumproperty.co.uk)







**3/4 | BEDROOMS**

**2 | BATHROOMS**

**2/3 | PUBLIC ROOMS**

**A lovely family home enjoying a prime residential location.**

This traditional chalet style villa enjoys a popular location within this highly sought after pocket of Newton Mearns. Benefitting from enhanced accommodation by way of garage conversion and rear conservatory, the subjects are set within private mature garden grounds and present a great opportunity to the local marketplace.

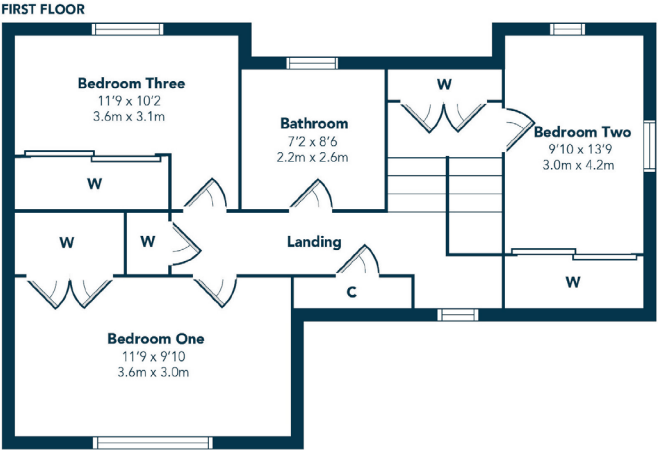
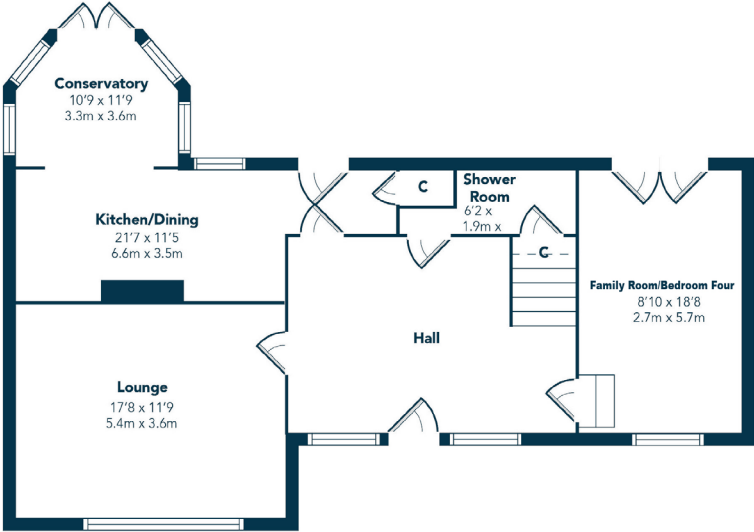
The ground floor accommodation extends to traditional reception hallway with modern shower room adjacent, generous formal lounge to front with feature fireplace, fantastic open plan dining kitchen/sitting room with a range of wall and base mounted units and access through to spacious rear facing conservatory. The ground floor is completed by a garage conversion (potential double bedroom) providing lovely family/sitting room with French doors to rear gardens. Staircase ascends to half landing with storage adjacent and access to generous double bedroom, with the bright and spacious first floor landing giving access to spacious principal bedroom with fitted storage, further good double bedroom, and modern main family bathroom. The specification includes a system of gas central heating, double glazing, modern kitchen and bathrooms, stylish co-ordinated tiling, lovely modern floor coverings and overall the subjects are beautifully presented and designed throughout.

Externally the property is set within generous level mature garden grounds which retain a high degree of privacy. Said gardens are easily maintained by virtue of lawned area, and patio areas. Lovely water feature. Driveway to front providing ample vehicular parking.









Newton Mearns is one of the most sought after suburbs within the south side of Glasgow. The property is superbly placed for a wide range of amenities and indeed nationally recognised schooling. The property is a short distance away from excellent shopping at The Avenue at Mearns Cross and Greenlaw Village. There are an abundance of sports and recreational facilities found within the district which include excellent golf courses, parks, tennis clubs and there are a variety of country pursuits found nearby at Hazeldene. Local train stations include Whitecraigs Station and Patterton Station.

**NM4143** | Sat Nav: 9 Turnberry Drive, Newton Mearns, G77 5SE

For the full home report visit [www.corumproperty.co.uk](http://www.corumproperty.co.uk)

\* All measurements and distances are approximate Floorplans are for illustration purposes and may not be to scale.





WE'RE **SOLD** ON  
YOUR FUTURE



Corum Newton Mearns  
134 Ayr Road, Newton Mearns, G77 6EG

**Tel:** 0141 639 5888

**Email:** [n.mearns@corumproperty.co.uk](mailto:n.mearns@corumproperty.co.uk)

[www.corumproperty.co.uk](http://www.corumproperty.co.uk)