



81 HARVIE AVENUE

NEWTON MEARNS

www.corumproperty.co.uk





3 | BEDROOMS

1 | BATHROOM

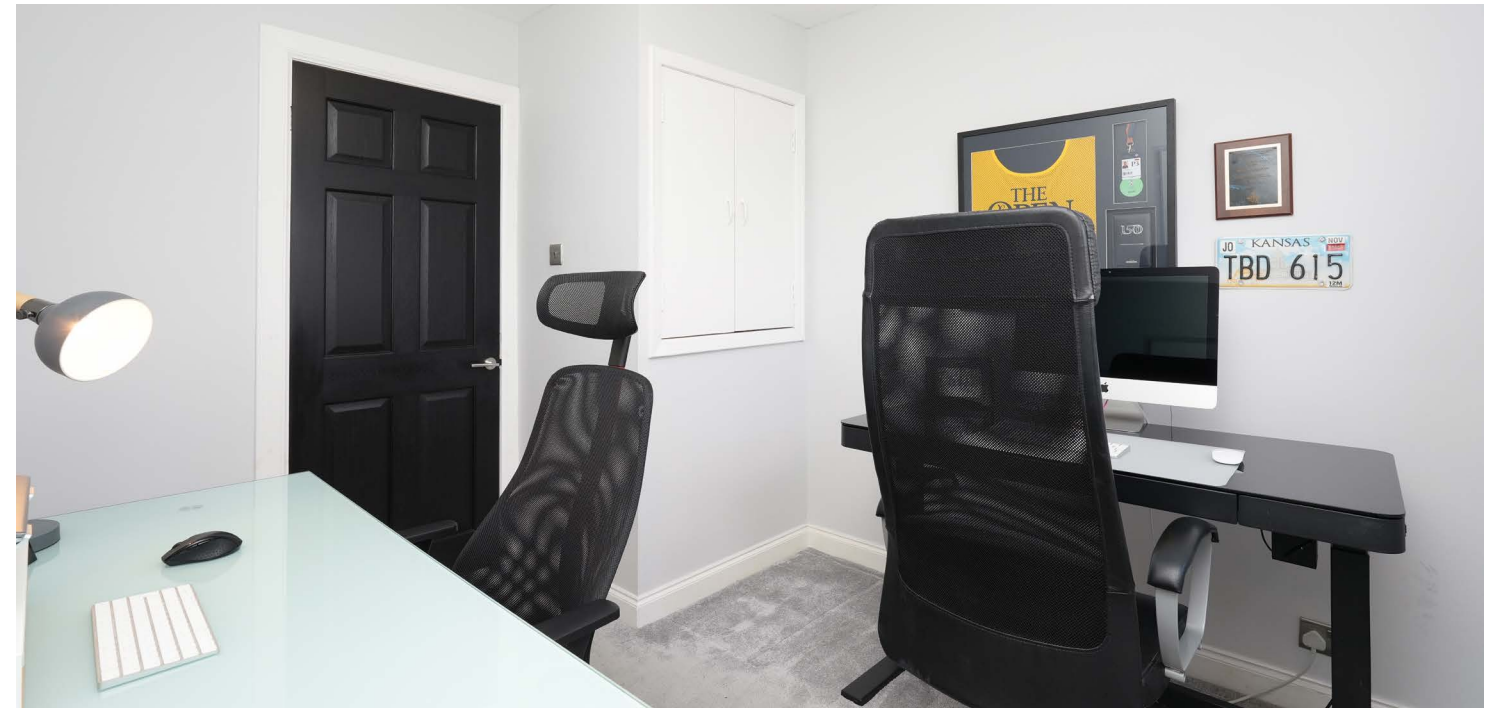
1 | PUBLIC ROOM

A lovely semi-detached villa enjoying a quiet residential setting.

This lovely family home enjoys a quiet yet convenient location within this sought after residential pocket of Newton Mearns. Set within level garden grounds, the subjects are well presented throughout and offer an easy move to the local marketplace.

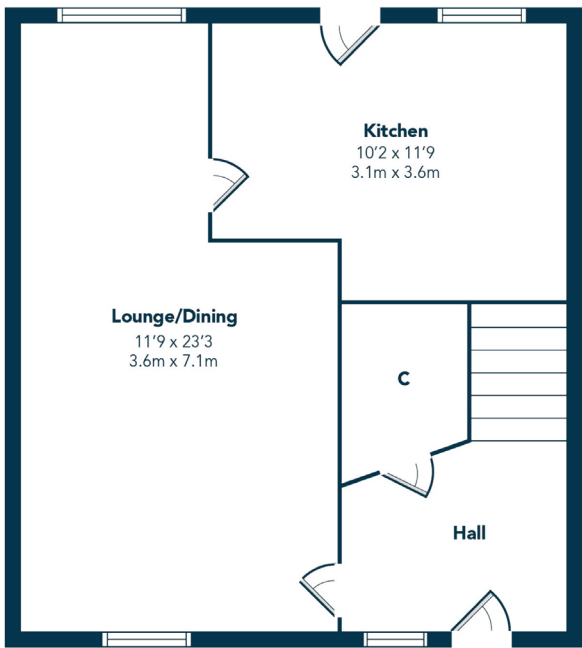
Ground floor accommodation extends to reception hallway with storage adjacent, a fantastic open plan lounge/dining room with aspects to front and rear, and modern fitted kitchen with a range of wall and base mounted units and access to gardens. Upstairs provides access to generous principal bedroom, second spacious double bedroom, good third bedroom and recently upgraded contemporary main family bathroom. Additional storage provided by way of attic space. The specification of the property includes a system of gas central heating, double glazing and the subjects are well presented, decorated and designed throughout.

Externally the property is set within level south facing rear garden grounds designed for ease of maintenance. Garage to rear fitted with power and light. Additional front area with open aspects.

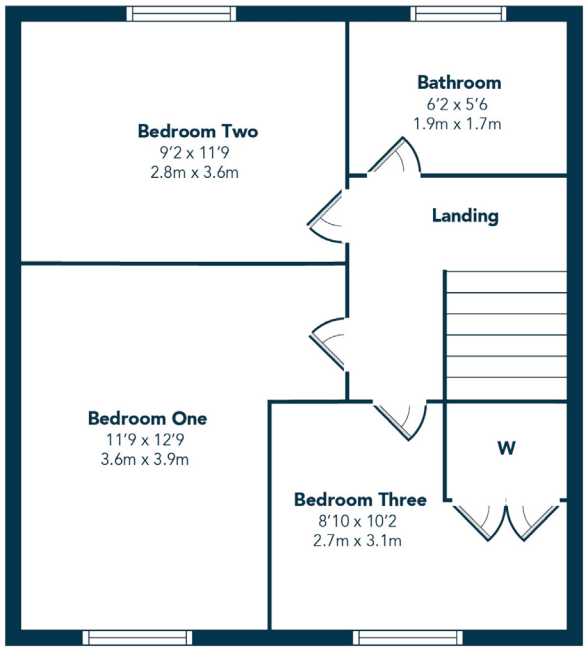




GROUND FLOOR



FIRST FLOOR



Situated within a highly sought after pocket of Newton Mearns, the property is superbly placed for a wide range of amenities and indeed nationally recognised schooling. A wide variety of restaurants, supermarkets and retailers can be found at the nearby Mearns Cross Shopping Centre and Greenlaw Village, and there are a range of sports and leisure activities found within the district including parks, health clubs, gyms and golf courses. Excellent local transport links providing swift access to the city centre and beyond are also close at hand with Whitecraigs Station being the nearest.

NM4155 | Sat Nav: 81 Harvie Avenue, Newton Mearns, G77 6LH

For the full home report visit www.corumproperty.co.uk

* All measurements and distances are approximate Floorplans are for illustration purposes and may not be to scale.



WE'RE **SOLD** ON
YOUR FUTURE



Corum Ayr
10 Beresford Terrace, Ayr, KA7 2EG

Tel: 01292 880 888

Email: ayr@corumproperty.co.uk

www.corumproperty.co.uk