



71 MAYBOLE CRESCENT

NEWTON MEARNs

www.corumproperty.co.uk



1 | BEDROOM
1 | BATHROOM
1 | PUBLIC ROOM

Fresh mid terrace duet villa with lovely established gardens

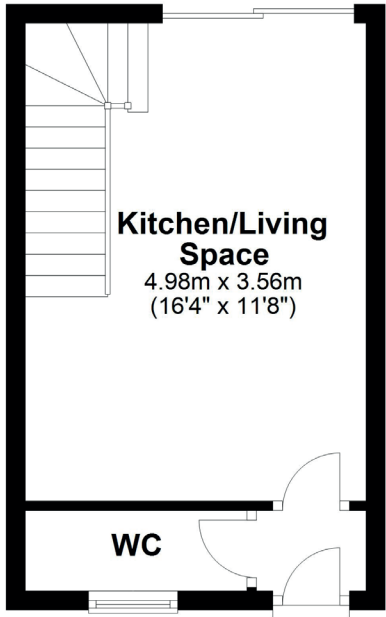
- Bright open plan living over two levels.
- Unique full en suite bathroom for this style of property
- Convenient location for Newton Mearns amenities.
- Private and level rear gardens.
- Well suited to a range of buyers.

Amenities

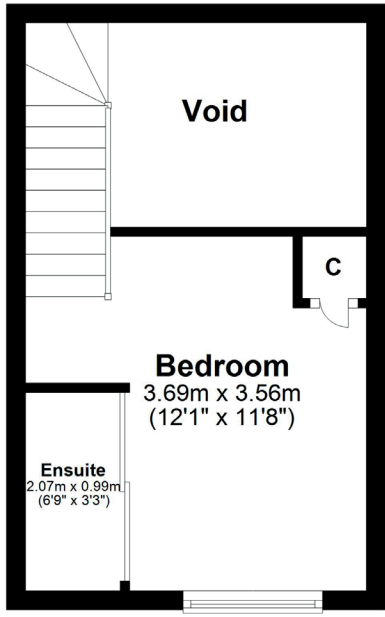
Newton Mearns is one of the most sought after suburbs within the south side of Glasgow. The property is superbly placed for a wide range of amenities and indeed nationally recognised schooling. The property is a short distance away from excellent shopping at The Avenue at Mearns Cross and Greenlaw Village. There are an abundance of sports and recreational facilities found within the district which include excellent golf courses, parks, tennis clubs and there are a variety of country pursuits found nearby at Hazeldene. Local train stations include Whitecraigs Station and Patterton Station.



Ground Floor
Approx. 21.0 sq. metres (226.2 sq. feet)



First Floor
Approx. 21.0 sq. metres (226.4 sq. feet)



Sat Nav:
71 Maybole Crescent, Newton Mearns G77 5SY

NM4165

*All measurements and distances are approximate.
Floorplans are for illustration purposes and may not be to scale.

For the full home report visit
www.corumproperty.co.uk



WE'RE **SOLD** ON
YOUR FUTURE



Corum Newton Mearns
134 Ayr Road, Newton Mearns, G77 6EG

Tel: 0141 639 5888

Email: n.mearns@corumproperty.co.uk

www.corumproperty.co.uk