



GROUND FLOOR 11 BEACONSFIELD ROAD

KELVINSIDE

www.corumproperty.co.uk





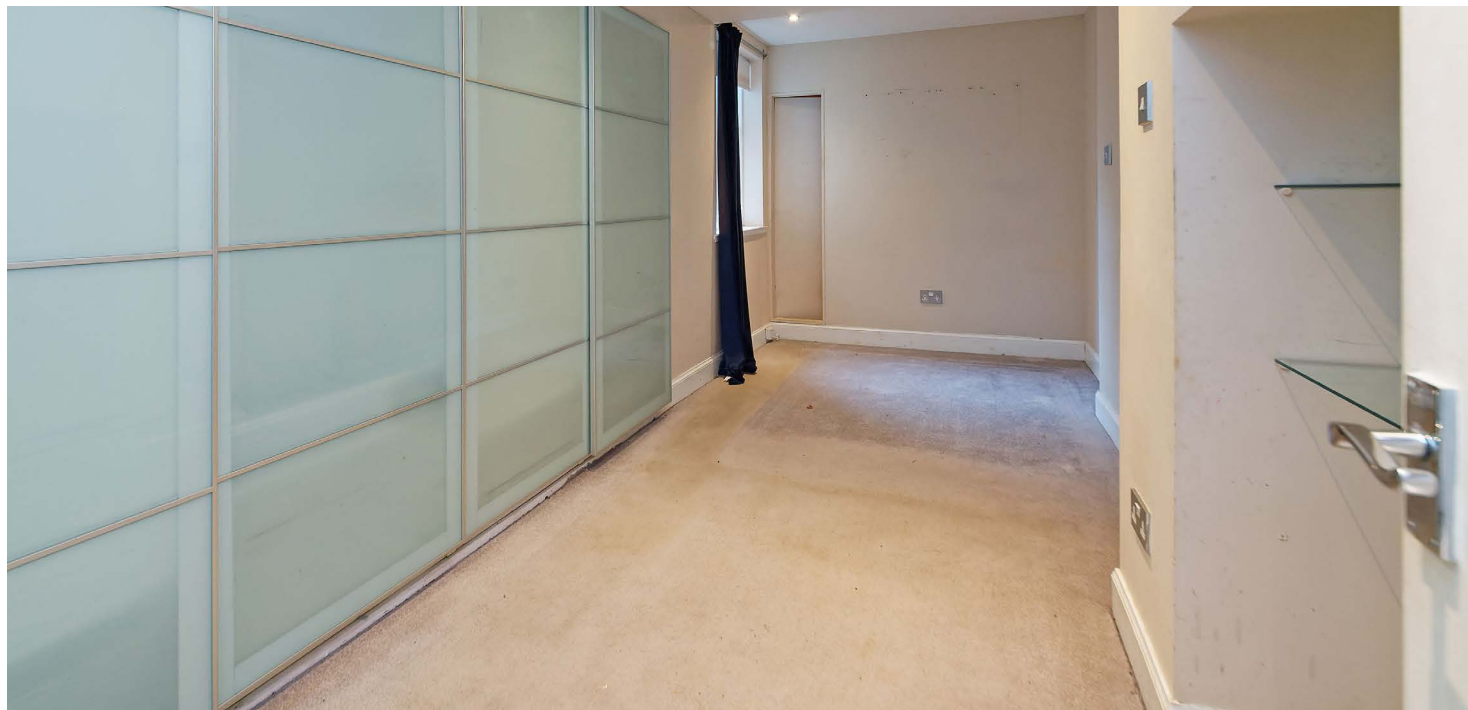
1 | BEDROOM

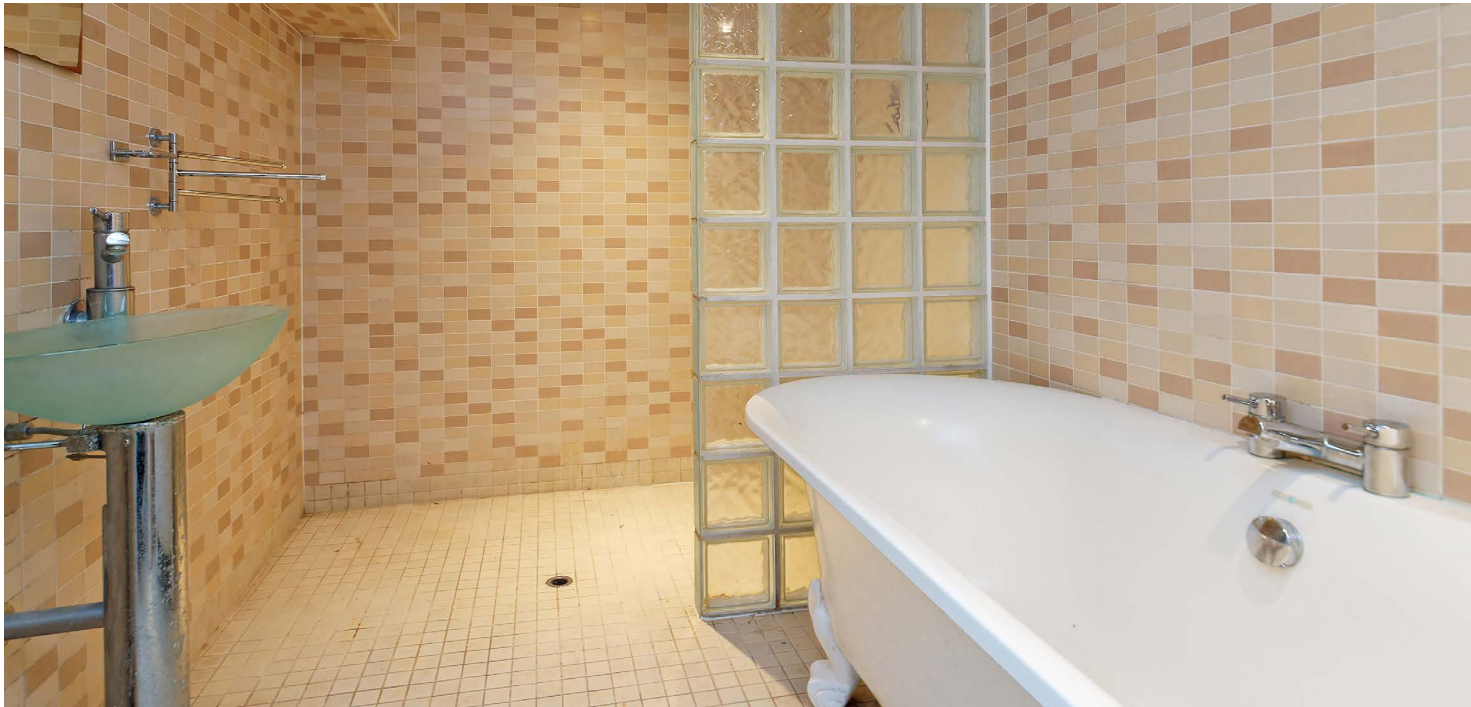
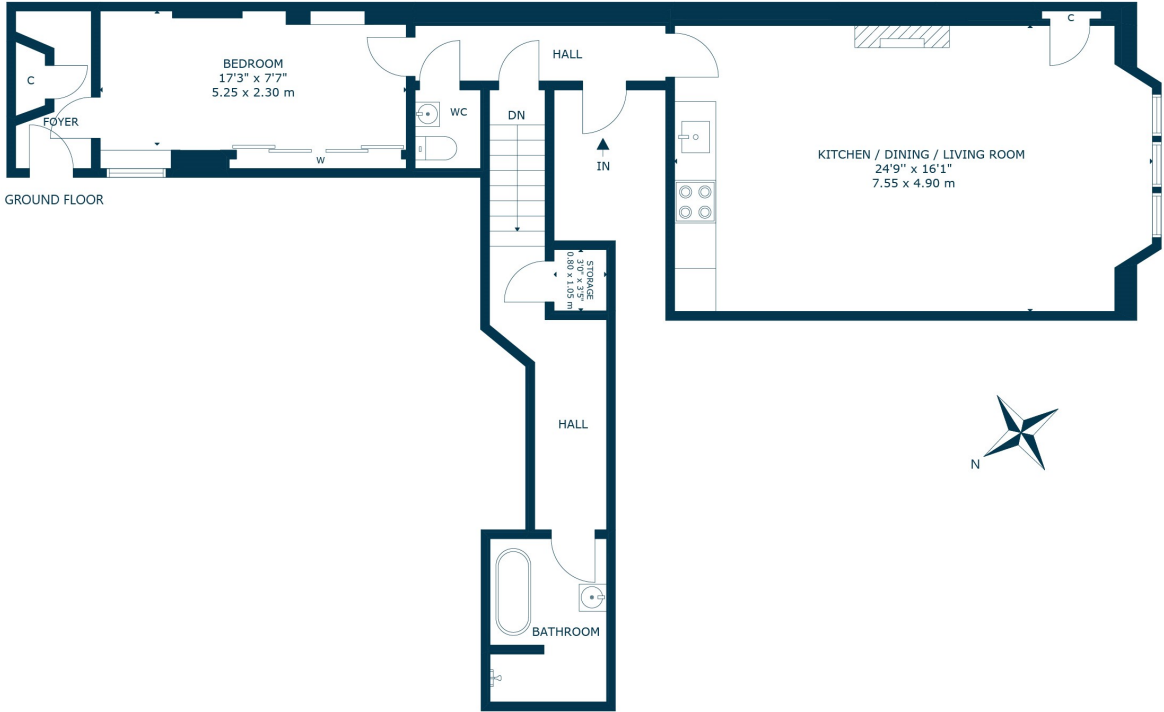
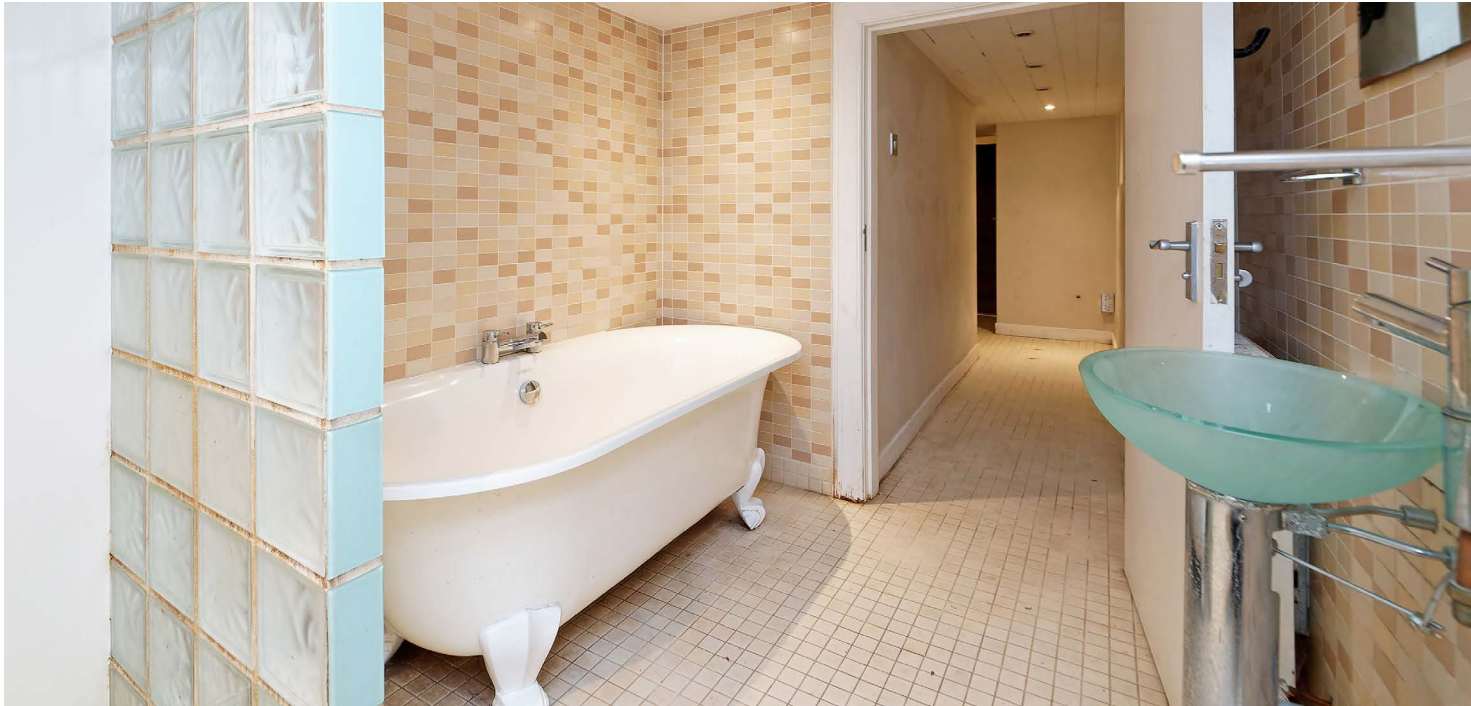
1 | BATHROOM

1 | PUBLIC ROOM

This ground floor flat at 11 Beaconsfield Road is a one bedroom conversion within a blonde sandstone, semi detached villa in the popular Kelvinside district.

The accommodation, which is entered through a well maintained communal hall, is in need of some general upgrading and comprises of: reception hallway, elegant bay window lounge with open plan kitchen, double bedroom with fitted wardrobes and a WC. A staircase off the hall leads downstairs to the bathroom. The property also benefits from secure door entry, gas central heating, communal gardens and first come first served parking in the driveway.





Kelvinside is an affluent district in the heart of the West End. It is situated north of the River Clyde and is bounded by Broomhill, Dowanhill and Hyndland to the south, with Kelvindale and the River Kelvin to the north. The district boasts some superb large Victorian villa and terraces, along with fantastic new build properties.

Kelvinside is well placed for a number of local shops and amenities, on both Hyndland Road and Byres Road, including cafes, delicatessens, restaurants and bars. The area is extremely popular with families, upsizers and downsizers alike, and there are a number of supermarkets in the area, including Marks & Spencer and Waitrose. Glasgow's Botanic Gardens are close by, offering green space and walks along the River Kelvin.

WE4820 | Sat Nav: Ground Floor 11 Beaconsfield Road, Kelvinside, Glasgow, G12 0PJ

For the full home report visit www.corumproperty.co.uk

* All measurements and distances are approximate Floorplans are for illustration purposes and may not be to scale.



WE'RE **SOLD** ON
YOUR FUTURE



Corum West End
82 Hyndland Road, Glasgow, G12 9UT

Tel: 0141 357 1888

Email: westendenq@corumproperty.co.uk

www.corumproperty.co.uk