



20 BARONALD DRIVE
KELVINDALE

www.corumproperty.co.uk





- 3 | BEDROOMS
- 1 | BATHROOM
- 2 | PUBLIC ROOMS

20 Baronald Drive is a highly sought after, three bedroom, semi-detached house with private driveway, garage and south facing garden, situated in the popular Kelvindale district.

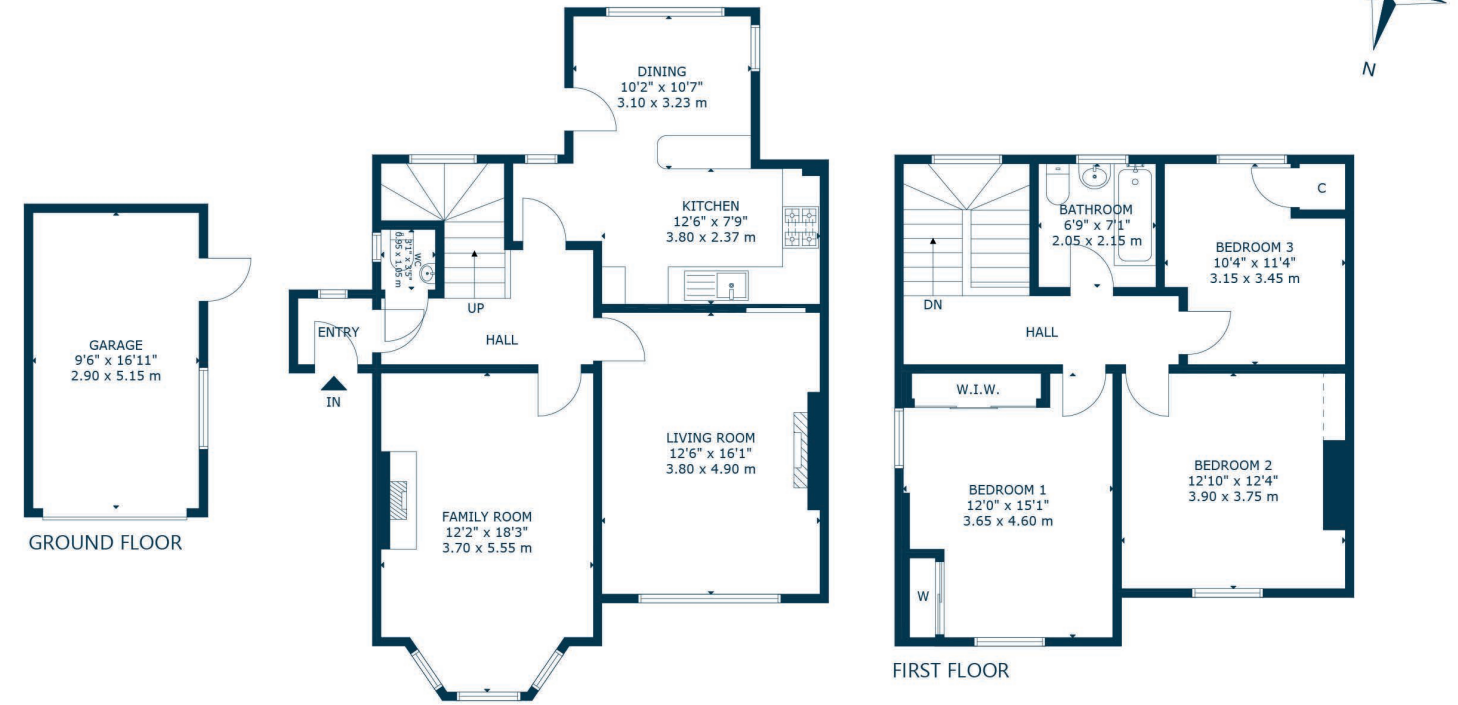
The internal accommodation comprises; welcoming reception hall with WC off, bay windowed lounge, dining room, which could be utilised as a fourth bedroom, and a fantastic, extended dining kitchen, making this the true heart of this family home. Upstairs, there are three spacious double bedrooms and a family bathroom with shower over bath.

The property has double glazing, gas central heating and fantastic south facing manicured gardens with patio area. To the front there is off-road parking with a driveway and garage.









Kelvindale is a popular district in the West End of the city. Kelvindale shares the postcode G12 with the neighbouring districts of: Kelvinside, Hillhead, Hyndland and Dowanhill. The area is characterised by traditional interwar housing, formed of tenements and semi-detached houses, and is extremely popular with young families due to excellent schooling at Kelvindale Primary and Cleveden Secondary School.

Many of the street names in the area are named after places in England. These include Colchester Drive, Beaconsfield Road, Manchester Drive, Leicester Avenue, Northampton Drive, Southampton Drive and Weymouth Drive. A few are also named after Scottish place names, including Grandtully Drive and Fortingall Avenue.

WE4849 | Sat Nav: 20 Baronald Drive, Kelvindale, Glasgow, G12 0H2

For the full home report visit www.corumproperty.co.uk

* All measurements and distances are approximate Floorplans are for illustration purposes and may not be to scale.



WE'RE **SOLD** ON
YOUR FUTURE



Corum West End
82 Hyndland Road, Glasgow, G12 9UT

Tel: 0141 357 1888

Email: westendenq@corumproperty.co.uk

www.corumproperty.co.uk