



5 THE GREEN
SUNDRUM

www.corumproperty.co.uk





4 | BEDROOMS

3 | BATHROOMS

2 | PUBLIC ROOMS

A beautifully presented and substantial detached family home set in extensive gardens within a tranquil, idyllic setting and woodland backdrop.

The Sundrum Castle Estate has a beautiful rural and parkland setting, only 10 minutes from the market town of Ayr and the A77 for commuting to Glasgow. The estate offers an interesting array of activities including swimming, fishing, tennis, and horse riding all on your immediate doorstep. The Green is an exclusive set of executive detached family home, enjoying a lovely position within the Sundrum Estate, with large plots and excellent privacy.

Number 5 is a wonderful home perfectly suited to the family market with extensive accommodation arranged over two levels. Approached via a chipped driveway, the property is presented in truly show home condition both internally and externally with a stylish, flexible layout and generous room proportions throughout. There have been a number of improvements made to the original property, with a bespoke fitted kitchen with Silestone quartz worktops, a glass balustrade in the hall, quality flooring throughout, a real open fireplace in the lounge and gorgeous decor.

In summary the accommodation extends to, on the ground floor, a broad and welcoming reception hallway with a downstairs WC, a formal lounge with an open fireplace and decorative surround, a family room which could be utilised as a downstairs bedroom if required and an open plan kitchen/dining room with French doors to the garden and a useful separate utility room. Upstairs there are four well-proportioned double bedrooms including a master suite with an en-suite bathroom and walk-in wardrobe. Bedroom 2 also features a three-piece en-suite shower room. Completing the accommodation is a three-piece family bathroom.

Externally to the front there is an area of lawn and chipped driveway providing parking space for several vehicles. To the side there is an attached garage with power and lighting. The extensive rear gardens are predominantly lawned with an initial raised deck, perfect for entertaining, a patio area, a purpose-built wood store and mature trees.

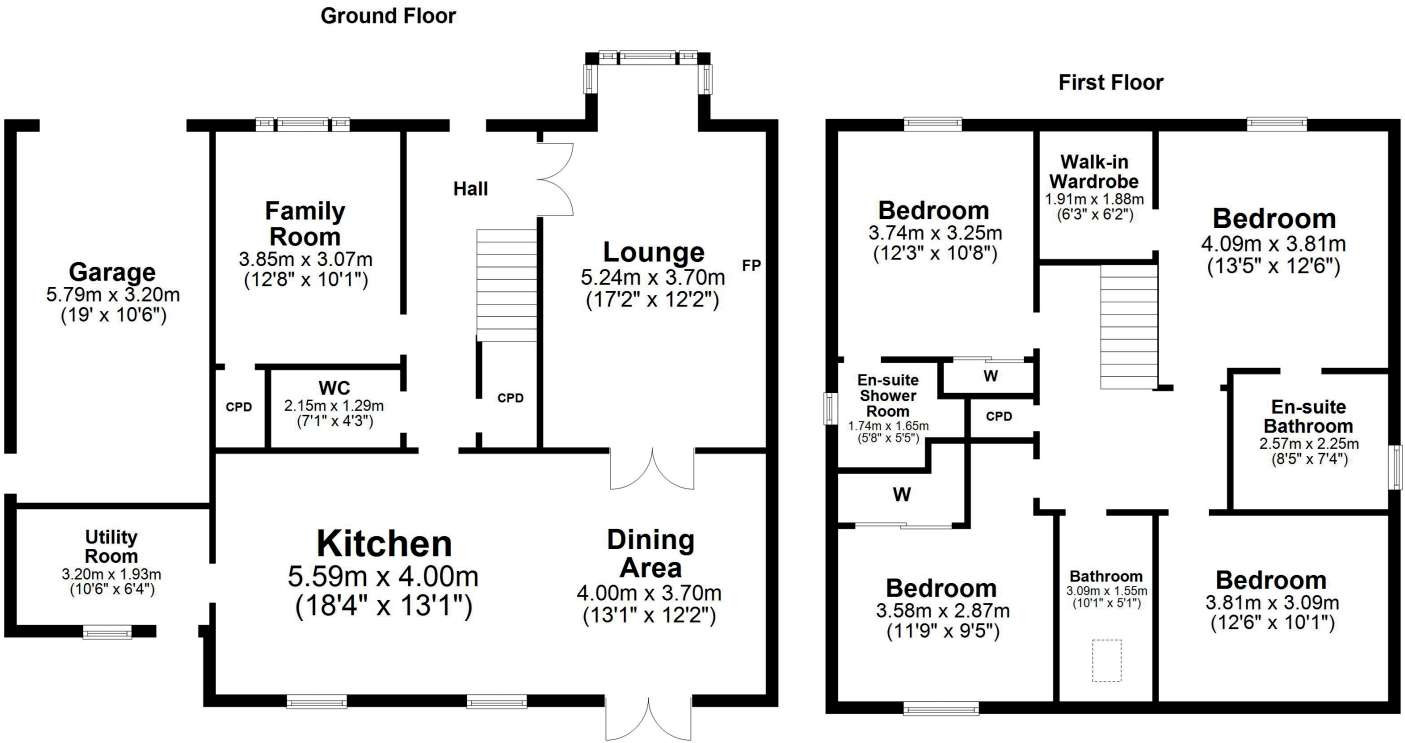












Sundrum Castle Estate is home to Sundrum Castle one of the oldest inhabited castles in Scotland and which dates back to the War of Scottish Independence. The estate is jointly owned by each of the 54 homes within the estate and covers an area of approximately 92 acres with breathtaking views, communal woodland walks, use of the private tennis court and private fishing rights to the stretch of the Water of Coyle that runs through the estate. It is situated around four miles from Ayr town centre which provides a comprehensive range of retail shopping, transport links, restaurants, and recreational facilities. The A77/M77 road network provides swift commuting to Glasgow City Centre and surrounding districts, while the nearby Prestwick International Airport offers flights to destinations throughout Europe.

AY4654 | Sat Nav: 5 The Green, Sundrum, KA6 5JG

For the full home report visit www.corumproperty.co.uk

* All measurements and distances are approximate Floorplans are for illustration purposes and may not be to scale.



WE'RE **SOLD** ON
YOUR FUTURE



Corum Ayr
10 Beresford Terrace, Ayr, KA7 2EG

Tel: 01292 880 888

Email: ayr@corumproperty.co.uk

www.corumproperty.co.uk