



# 10 SHAWFARM GARDENS

PRESTWICK

[www.corumproperty.co.uk](http://www.corumproperty.co.uk)







**2 | BEDROOMS**

**2 | BATHROOMS**

**1 | PUBLIC ROOM**

**This excellent modern first floor flat is located in this most popular Prestwick development which is in close proximity to both the town centre and airport.**

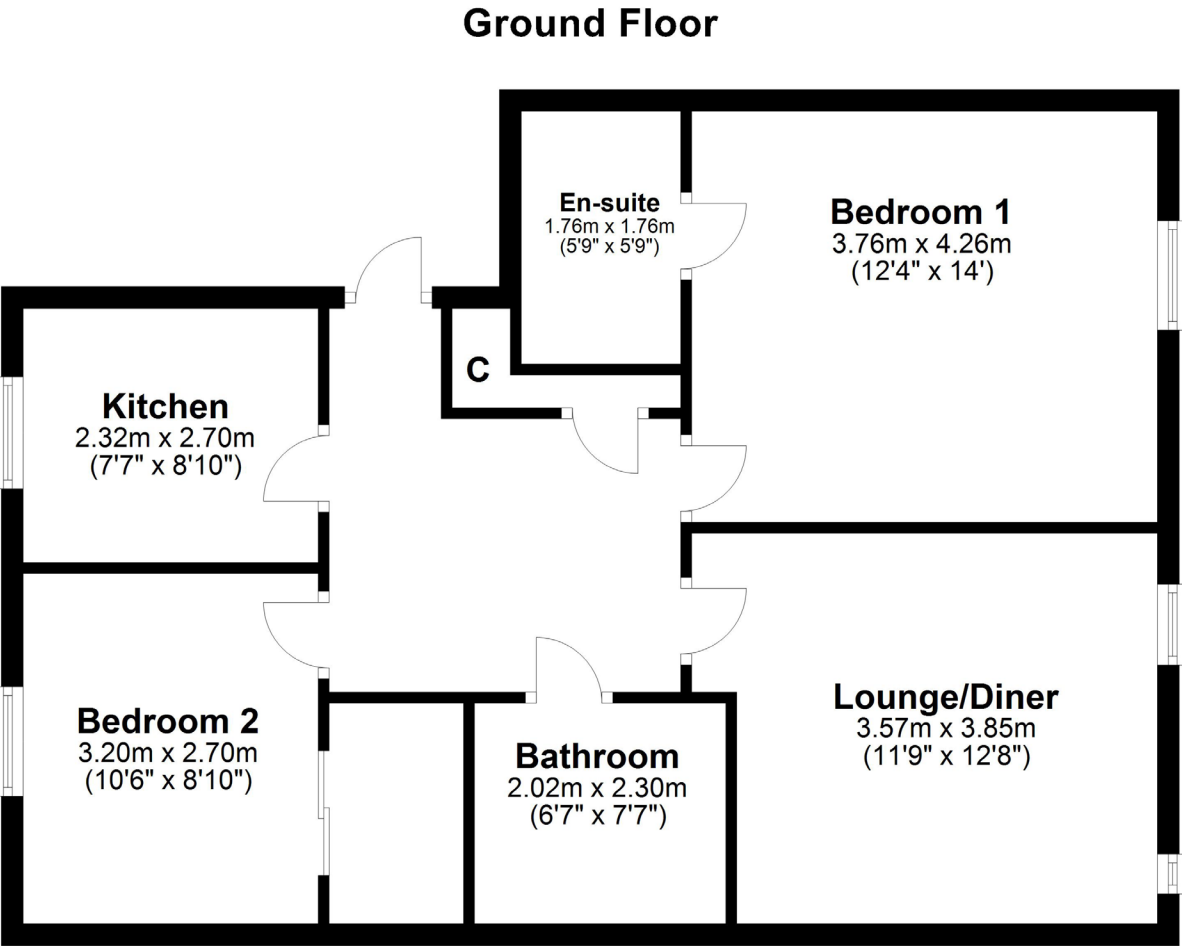
Shawfarm Gardens is a fabulous, flatted development which offers easy access to Prestwick town centre and its many amenities. Prestwick airport is just a short distance from the property. The excellent accommodation on offer extends to reception hallway, lounge which is open plan to the dining area, modern fitted kitchen, two double bedrooms, the master bedroom has an en-suite shower room and to further complement the home there is a modern bathroom. The property has gas central heating and double glazing.

There are communal areas and communal residents parking. Early viewing is highly recommended to appreciate the accommodation and location on offer.









Shawfarm Gardens is a highly sought after residential address due to its close proximity to Prestwick Main Street and Prestwick Airport. The town centre provides a plethora of boutique shops, bars and restaurants, while there are excellent road and rail links to Glasgow. Prestwick also provides a comprehensive range of sporting and recreational facilities, including golf courses, a vibrant sailing club, tennis and bowling clubs and an indoor swimming pool complex.

**AY4669** | Sat Nav: 10 Shawfarm Gardens, Prestwick, KA9 2GZ

For the full home report visit [www.corumproperty.co.uk](http://www.corumproperty.co.uk)

\* All measurements and distances are approximate Floorplans are for illustration purposes and may not be to scale.



WE'RE **SOLD** ON  
YOUR FUTURE



Corum Ayr  
14 Beresford Terrace, Ayr, KA7 2EG

**Tel:** 01292 880 888

**Email:** [ayr@corumproperty.co.uk](mailto:ayr@corumproperty.co.uk)

[www.corumproperty.co.uk](http://www.corumproperty.co.uk)