



25 NETHERPLACE ROAD

NEWTON MEARNS

www.corumproperty.co.uk



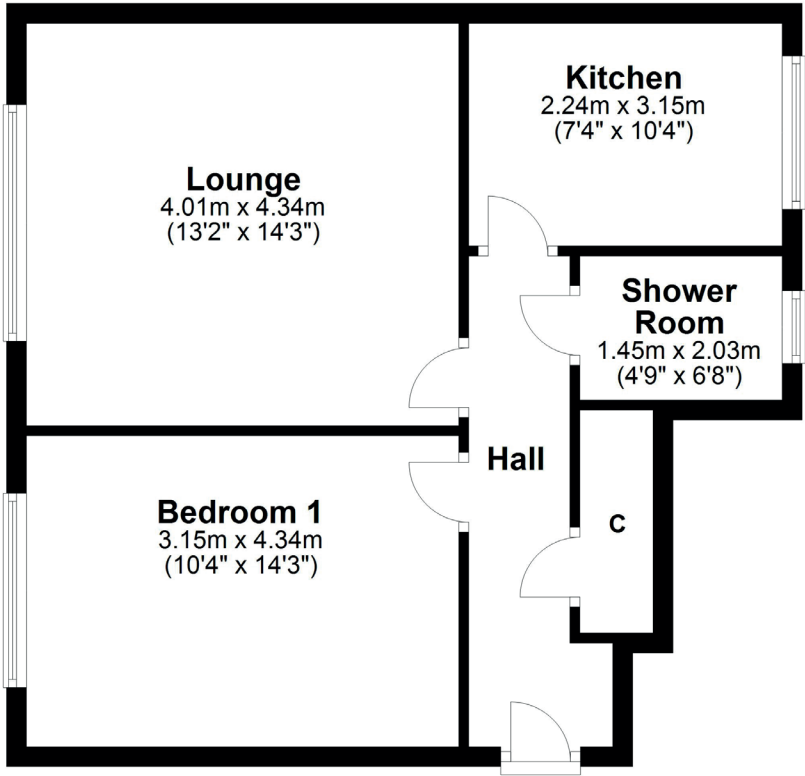
1 | BEDROOM
1 | BATHROOM
1 | PUBLIC ROOM

A lovely lower cottage flat in a popular and convenient Newton Mearns location.

- Terrific room proportions throughout.
- Spacious lounge.
- Modern bathroom.
- Fantastic gardens grounds both private and communal.
- Driveway and parking.

Amenities

The property is superbly located for nationally recognised schooling. Mearns Cross Shopping Centre and Greenlaw Village are both a short distance away, and retail outlets, motorway, road and train links (Patterton Train Station) providing swift access to the city centre are within easy reach. There is a myriad of sport and leisure facilities available within the area and the property is also a short distance away from the countryside and equestrian facilities.



Sat Nav:
25 Netherplace Road, Newton Mearns, G77 6BG
NM4178

*All measurements and distances are approximate.
Floorplans are for illustration purposes and may not be to scale.

For the full home report visit
www.corumproperty.co.uk



WE'RE **SOLD** ON
YOUR FUTURE



Corum Newton Mearns
134 Ayr Road, Newton Mearns, G77 6EG

Tel: 0141 639 5888

Email: n.mearns@corumproperty.co.uk

www.corumproperty.co.uk