



2/1, 2 FALLOCH ROAD

QUEEN'S PARK

www.corumproperty.co.uk



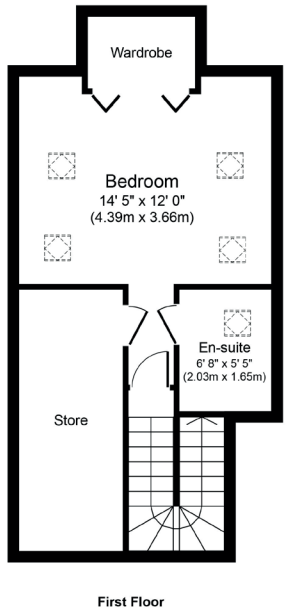
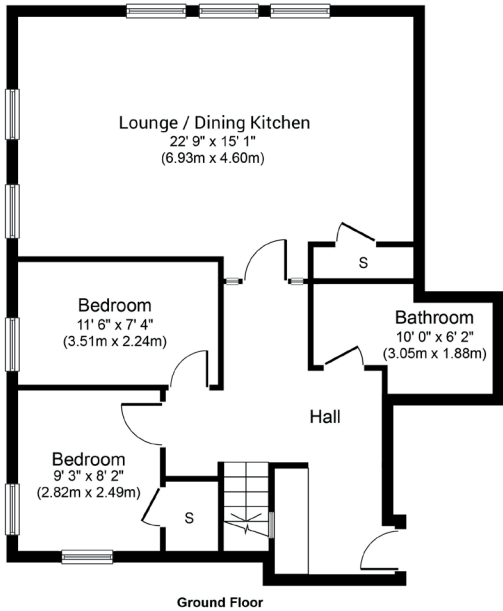
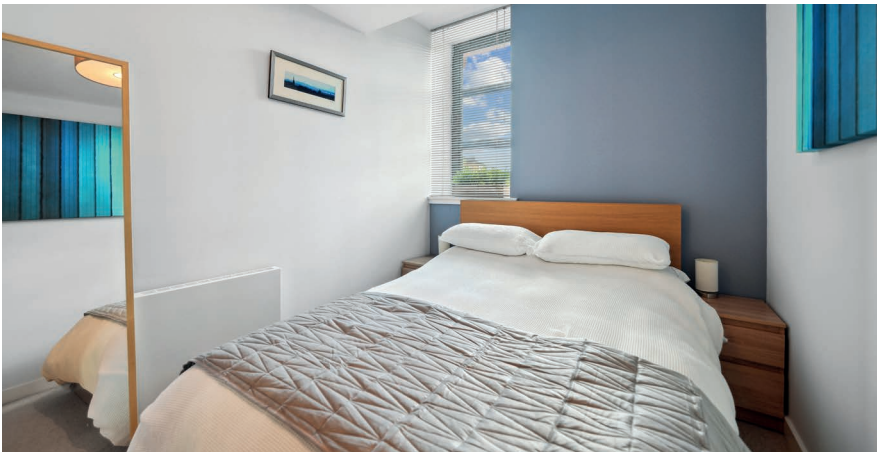
3 | BEDROOMS
2 | BATHROOMS
1 | PUBLIC ROOM

Occupying a bright duplex position over first and second floor levels, this unique property is a real triumph in style and taste. Formerly Queens Park Synagogue, the building was successfully converted 2009/2010 with 15 flats now sharing their own piece of history in contemporary surroundings.

- Unique duplex apartment in cul-de-sac address
- Sympathetic conversion of former Synagogue
- Large open plan living dining kitchen space
- Three double sized bedrooms, one with en-suite
- Designated off street parking space to front
- Turn-key condition home ready to move into

Amenities

Falloch Road is a quiet cul-de-sac less than one mile from the numerous independent coffee houses, restaurants, bars and shops in Battlefield. Recreational pursuits are available locally at Queens Park or around the corner at the Battlefield Community Garden where residents of the area regularly socialise, grow plants and host barbeques. Mount Florida train station is approximately 750 yards from the front door providing several services an hour into the city centre.



Sat Nav:
2 Falloch Road, Glasgow, G42 9QX

SS4527

*All measurements and distances are approximate.
Floorplans are for illustration purposes and may not be to scale.

For the full home report visit
www.corumproperty.co.uk



WE'RE **SOLD** ON
YOUR FUTURE



Corum Shawlands
247 Kilmarnock Road, Shawlands, G41 3JF

Tel: 0141 636 7588
Email: shawlands@corumproperty.co.uk

www.corumproperty.co.uk