



158A ALBERT ROAD

CROSSHILL

www.corumproperty.co.uk



2 | BEDROOMS
1 | BATHROOM
1 | PUBLIC ROOM

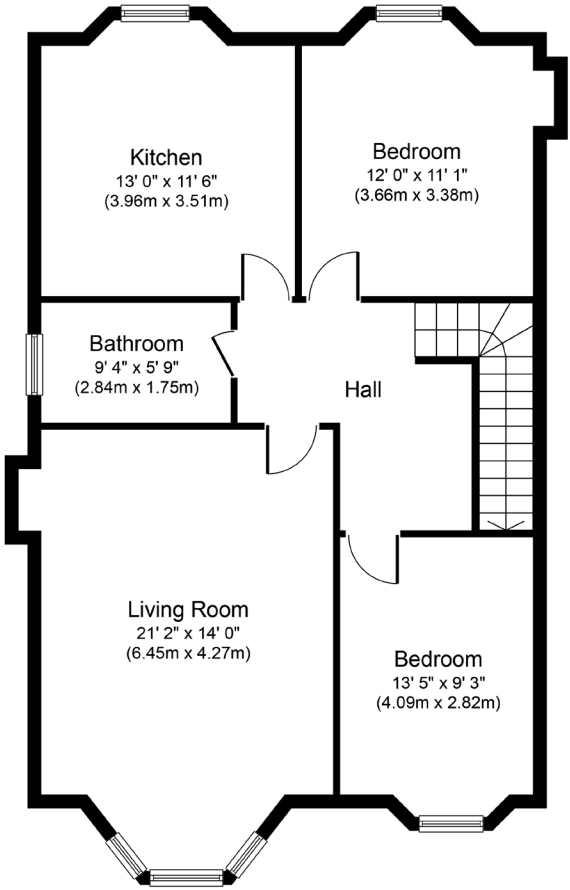
A superb main door upper conversion, presented to the market in turn-key order, with beautiful private gardens to the front.

- Traditional upper conversion
- 2 double sized bedrooms
- Impressive bay window lounge with log burner
- Dining sized kitchen and modern bathroom
- An array of period features, private gardens to the front
- Double glazing and Gas central heating

Amenities

The property is positioned within walking distance of shops and amenities upon Victoria Road, Mount Florida, Pollokshaws Road and Kilmarnock Road where thriving coffee shops, restaurants and delicatessens can be found. More extensive amenities are found at the Marks and Spencer's store at Queens Park, the Morrison's store at Crossmyloof or Newlands, Asda at Toryglen, or the shopping mall at Silverburn Pollok, a short drive to the Southwest.

Recreational pursuits are varied in nearby Queen's Park which has nature walks/trails, all-weather football pitches and tennis courts.



Sat Nav:
158a Albert Road, Crosshill, G42 8UF

SS4542

*All measurements and distances are approximate.
Floorplans are for illustration purposes and may not be to scale.

For the full home report visit
www.corumproperty.co.uk



WE'RE **SOLD** ON
YOUR FUTURE



Corum Shawlands
247 Kilmarnock Road, Shawlands, G41 3JF

Tel: 0141 636 7588

Email: shawlands@corumproperty.co.uk

www.corumproperty.co.uk