



**6 MEADOWBANK LANE**  
PRESTWICK

[www.corumproperty.co.uk](http://www.corumproperty.co.uk)







4 | BEDROOMS

2 | BATHROOMS

3 | PUBLIC ROOMS

**A simply superb four-bedroom traditional detached villa quietly positioned within Meadowbank Lane and just a short distance from the sea front and Prestwick town centre.**

This utterly charming family home is steeped in character with original, traditional cornicing and features. It sits within fabulous mature gardens that offer a high degree of privacy and is beautifully stocked with a wide variety of trees and shrubs.

The subjects offer a full seven apartment layout across two levels and retain a real sense of charm with a delightful range of traditional features combined with a modern specification and calm neutral decor. The generous room sizes and ceiling heights really accentuate the feeling of space whilst the discreet position of the house lends a genuine air of peace and tranquillity.

It is a large property therefore would ideally suit the family market however it has natural disposition for entertaining and the stunning mature gardens are a key feature. The courtyard provides private parking, a garage and two outhouses present an opportunity for further development.

In more detail the ground floor comprises entrance vestibule, grand reception hall, formal lounge with French doors to the garden. There is a separate dining room/bedroom 5 and a large family room with access to the modern fitted kitchen with French doors to the garden.

Upstairs a spacious upper landing provides access to three double bedrooms, a single bedroom/home office and a large family bathroom. The property is double glazed and has a gas fired central heating system.

Outside the gardens are simply superb. The front garden has a good size lawn with mature borders with a wide range of trees and shrubs. The rear garden has ample parking with space for multiple vehicles and a garage. There are two useful outhouses which offer excellent potential for development subject to local planning consents.













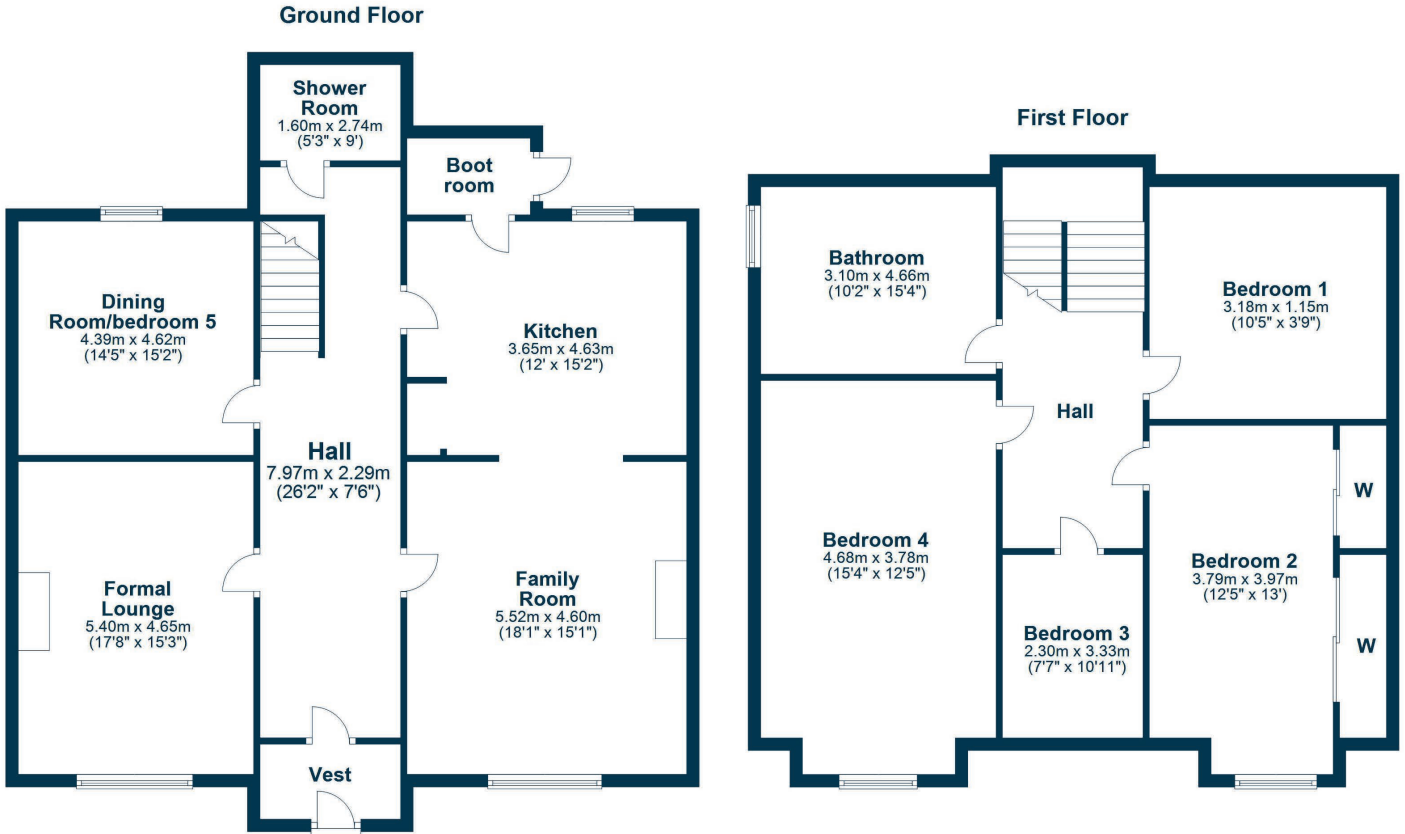












Meadowbank Lane lies a short distance from the sea front and the charming town of Prestwick which provides a plethora of boutique shops, bars, and restaurants. In addition, for the commuter there are excellent road and rail links to Glasgow. Prestwick provides a comprehensive range of sporting and recreational facilities including three golf courses, vibrant sailing club, tennis, cricket and bowling clubs and indoor swimming pool complex.

**AY4628** | Sat Nav: 6 Meadowbank Lane, Prestwick, KA9 1RX

For the full home report visit [www.corumproperty.co.uk](http://www.corumproperty.co.uk)

\* All measurements and distances are approximate Floorplans are for illustration purposes and may not be to scale.





WE'RE **SOLD** ON  
YOUR FUTURE



Corum Ayr  
10 Beresford Terrace, Ayr, KA7 2EG

**Tel:** 01292 880 888

**Email:** [ayr@corumproperty.co.uk](mailto:ayr@corumproperty.co.uk)

[www.corumproperty.co.uk](http://www.corumproperty.co.uk)