



8 GARDENROSE PATH

MAYBOLE

www.corumproperty.co.uk





3 | BEDROOMS

2 | BATHROOMS

2 | PUBLIC ROOMS

A stunning traditional semi detached villa in the heart of Maybole, with flexible extended accommodation, landscaped garden grounds and off road parking.

Gardenrose Path is a popular residential area set close to the amenities of Maybole, within walking distance of the brand new Maybole Community Campus which incorporates Carrick Academy, Culzean Primary and Early Years Nurse and St Cuthberts Primary. It has an open outlook across the rooftops of the town and rolling Ayrshire countryside in the distance.

Number 8 is a beautifully presented traditional sandstone semi detached family home, with all the character and period features lovingly retained and complimented by luxury, modern decor and fixtures. This substantial home has been extended to include a dining kitchen, a separate utility and a downstairs shower room at the rear, and there is flexible accommodation across two floors and five main apartments. The gardens have been professionally landscaped with ample off road parking to the front and level lawned gardens at the rear, highlighted by decorative aggregate and colourful shrubs. Viewing is essential to fully appreciate the wealth of living space and excellent location of this fantastic family home.

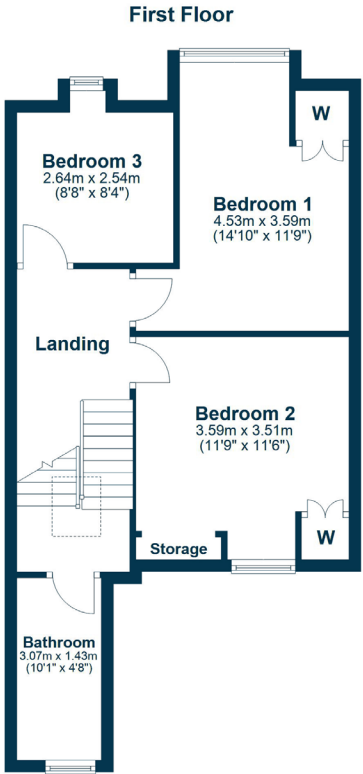
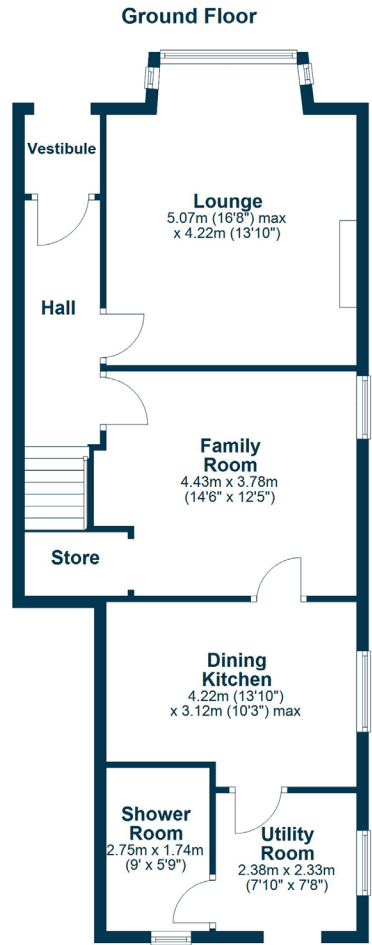
In more detail, the internal accommodation extends to an entrance vestibule, a hallway, a spacious bay-windowed lounge with a wood burning stove, a family room leading through to the modern dining kitchen, a separate utility room with a door to the garden and a shower room. On the half landing there is a modern family bathroom suite and on the upper floor there are two double bedrooms and a single bedroom.

Externally there is ample off road parking with a monoblock driveway, an elevated pathway and decorative shrubs and plants. There is gated access at the side round to the rear garden, which has a paved pathway, pebbles, a garden shed and plants. There is also an inbuilt brick store accessed at the rear.









Maybole is a popular town, with a range of local amenities, located just 7 miles from the market town of Ayr, which offers a comprehensive range of amenities including excellent schooling, retail shopping and leisure facilities. The A77 links via the M77 to Glasgow and Gardenrose Path is within walking distance of Maybole train station, which also links to Ayr, Glasgow and beyond. South Ayrshire is home to some of the world's finest golf courses and resorts, including the nearby Trump Turnberry and Royal Troon, both hosts of the Open Championship. Prestwick International Airport is only 16 miles away, with flights to many destinations throughout Europe.

AY4680 | Sat Nav: 8 Gardenrose Path, Maybole, KA19 8AG

For the full home report visit www.corumproperty.co.uk

* All measurements and distances are approximate Floorplans are for illustration purposes and may not be to scale.



WE'RE **SOLD** ON
YOUR FUTURE



Corum Ayr
14 Beresford Terrace, Ayr, KA7 2EG

Tel: 01292 880 888

Email: ayr@corumproperty.co.uk

www.corumproperty.co.uk