



53 WOODFIELD CRESCENT

AYR

www.corumproperty.co.uk





2 | BEDROOMS

1 | BATHROOM

1 | PUBLIC ROOM

A rarely available and well-presented ground floor apartment suited to a wide range of purchasers with own front and back doors, south facing garden and garage in a quiet cul-de-sac.

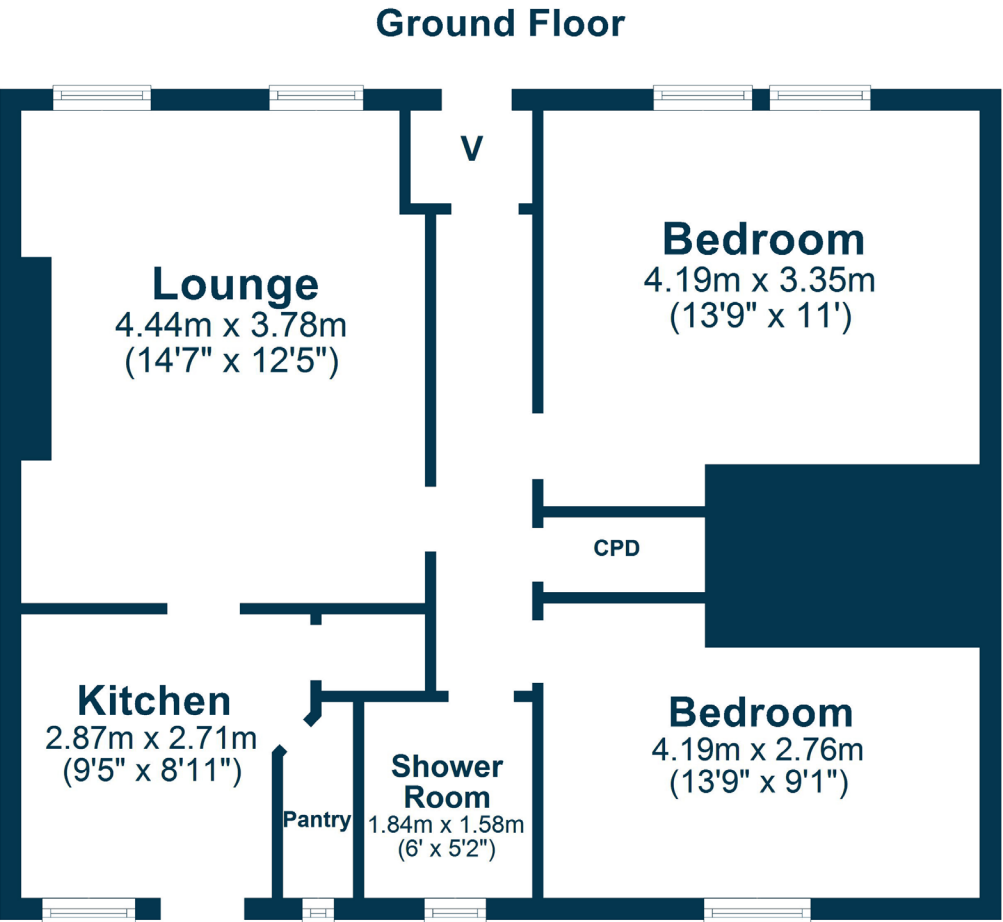
Number 53 is a ground floor apartment which provides bright and spacious accommodation suited to a variety of potential purchasers including those clients looking for all on the level living within a quiet residential cul-de-sac close to local amenities.

Features and benefits include a modern fitted kitchen, three-piece shower room with easy entry showers, gas central heating with a 'Vaillant' boiler, double glazing and neutral decoration.

In summary the accommodation extends to a vestibule, reception hallway with storage cupboard off, front facing lounge/dining room, fitted kitchen with pantry cupboard and door to the rear garden, two double bedrooms and three-piece shower room.

Externally the property enjoys front and rear gardens. The front garden is laid to decorative chips. The rear garden has a large, slabbed patio area, shrubbery border, driveway, garage, and summerhouse.





Woodfield Crescent is a popular and quiet residential locale close to a wide range of amenities. Both Ayr and Prestwick town centres are within close proximity and provide a more comprehensive range of amenities including supermarket and retail shopping, transport and recreational facilities. For the commuter there are excellent road and rail links to Glasgow and surrounding areas.

AY4684 | Sat Nav: 53 Woodfield Crescent, Ayr, KA8 8NU

For the full home report visit www.corumproperty.co.uk

* All measurements and distances are approximate Floorplans are for illustration purposes and may not be to scale.



WE'RE **SOLD** ON
YOUR FUTURE



Corum Ayr
14 Beresford Terrace, Ayr, KA7 2EG

Tel: 01292 880 888

Email: ayr@corumproperty.co.uk

www.corumproperty.co.uk