



**6D PRESTWICK ROAD**

AYR

[www.corumproperty.co.uk](http://www.corumproperty.co.uk)

  
c o r u m



**2 | BEDROOMS**

**1 | BATHROOM**

**2 | PUBLIC ROOMS**

**An impressive traditional first floor apartment with views across to the Arran skyline and providing very spacious accommodation perfectly positioned close to Ayr town centre.**

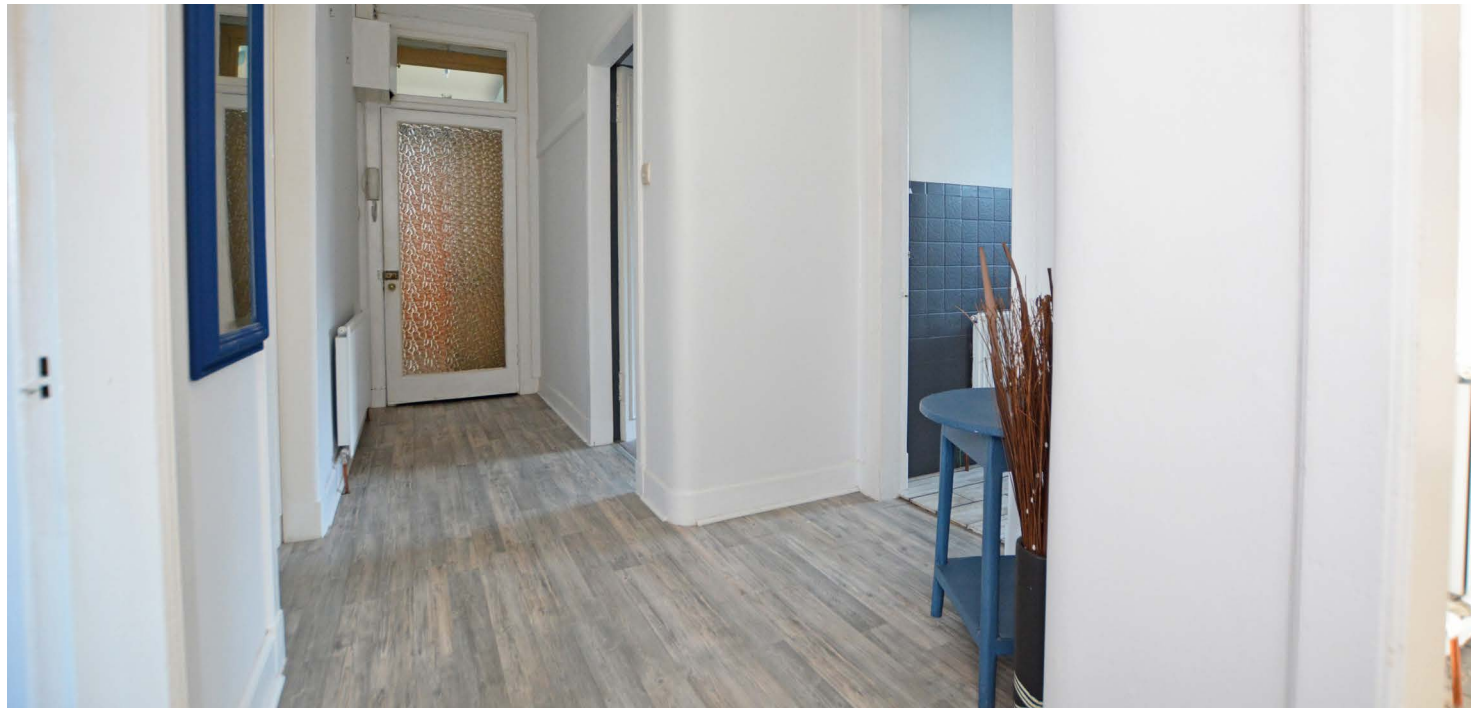
Number 6D is a traditional first floor apartment ideally suited to the first-time buyer/rental market with 4 principal apartments. The layout is flexible with the potential to be three bedrooms if required.

Features and benefits include views across to the Arran skyline from the bay window formation in the lounge and the front bedroom, fitted kitchen, double glazing (apart from a small window in the cupboard off the front bedroom) and gas central heating.

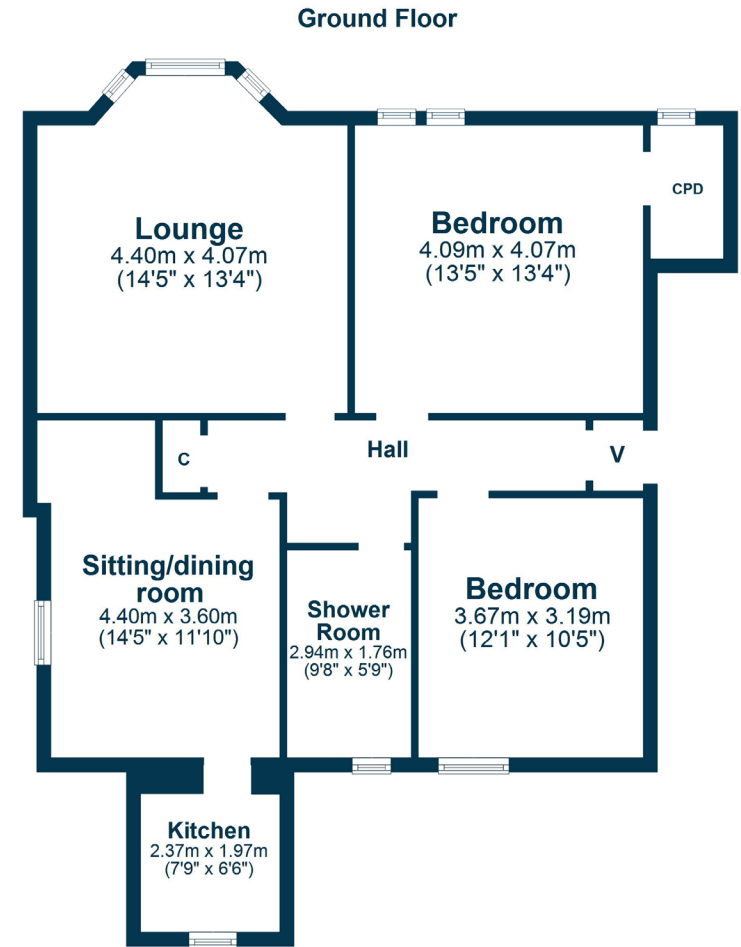
In summary the accommodation extends to, a vestibule, welcoming reception hallway, bay windowed lounge with feature fireplace, sitting/dining room, fitted kitchen, two double bedrooms and three piece shower room.

Externally to the rear there is a shared garden predominately laid to lawn with space for bins etc.









The property is perfectly placed for a wide range of amenities including Newton-on-Ayr railway station which links to Ayr and Glasgow, shops and schooling. Ayr town centre is less than one mile distant and provides a more comprehensive range of amenities including supermarket and retail shopping.

**AY4693** | Sat Nav: 6D Prestwick Road, Ayr, KA8 8LA

For the full home report visit [www.corumproperty.co.uk](http://www.corumproperty.co.uk)

\* All measurements and distances are approximate Floorplans are for illustration purposes and may not be to scale.



WE'RE **SOLD** ON  
YOUR FUTURE



Corum Ayr  
14 Beresford Terrace, Ayr, KA7 2EG

Tel: 01292 880 888

Email: [ayr@corumproperty.co.uk](mailto:ayr@corumproperty.co.uk)

[www.corumproperty.co.uk](http://www.corumproperty.co.uk)