



6 HAZELWOOD AVENUE

NEWTON MEARNS

www.corumproperty.co.uk





5 | BEDROOMS

2 | BATHROOMS

2 | PUBLIC ROOMS

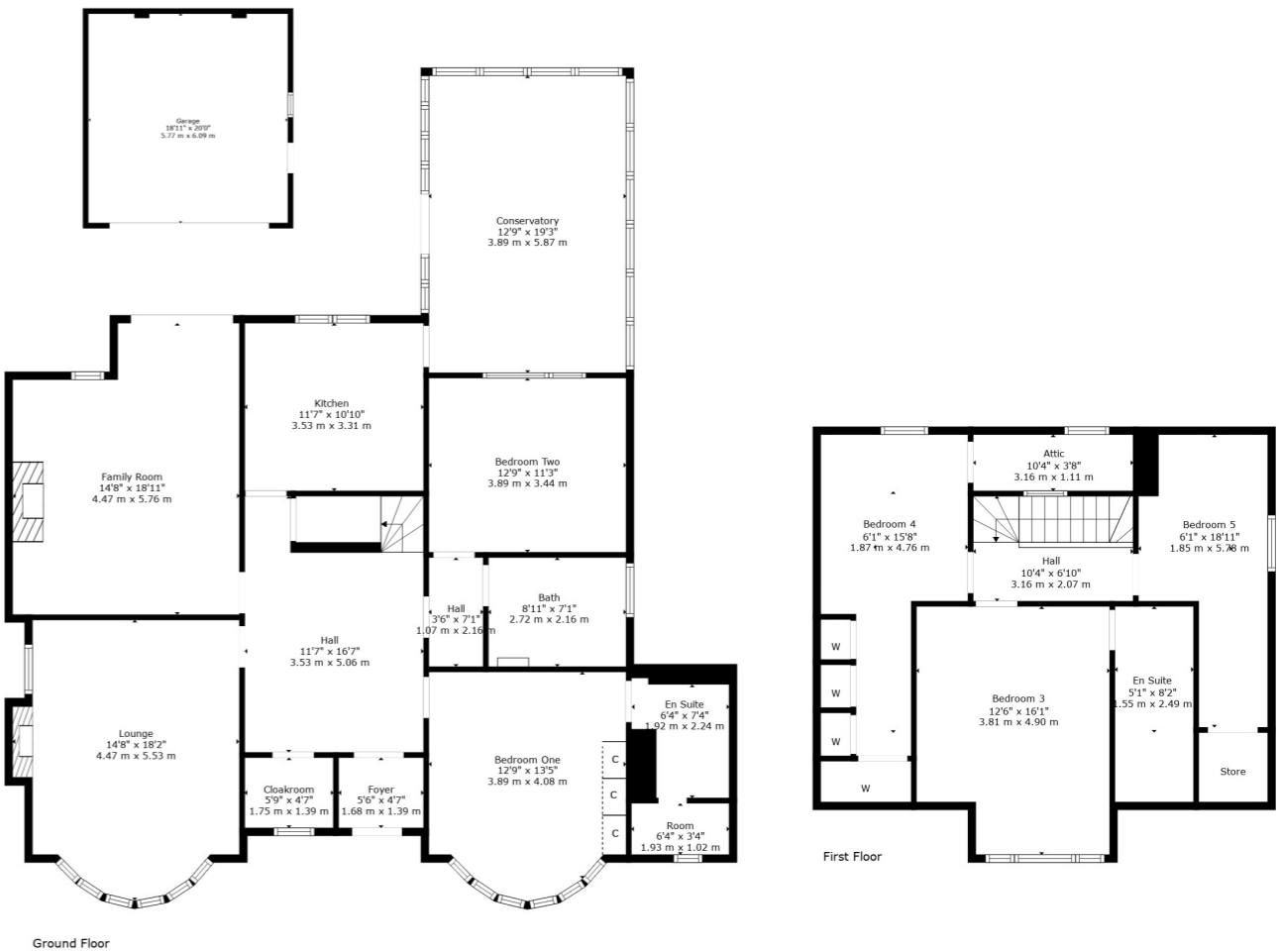
A spacious detached bungalow set within level garden grounds

Extending to approximately 2200 square feet or thereby, this traditional detached bungalow enjoys a prime residential location within the sought after pocket of Newton Mearns. Set within generous level garden grounds and displaying spacious accommodation encompassed across two levels, the subjects offer a great opportunity to the local marketplace.

Ground floor accommodation extends to entrance vestibule, traditional style reception hallway with cloaks adjacent, generous bay windowed lounge to front, lovely rear facing family room with French doors to gardens, fitted kitchen with a range of wall and base mounted units and access through to rear facing conservatory and access to gardens, spacious bay windowed double bedroom with fitted wardrobes, further good double bedroom and main family bathroom. Upstairs provides generous double bedroom with fitted wardrobes and en-suite shower room and two further good bedrooms. The specification of the property includes a system of gas central heating, double glazing, Karndean flooring, decorative gas fireplaces and overall, the property is well presented and decorated throughout.

Externally the property is set within private, level, easily maintained garden grounds laid mainly to lawn. Detached garage fitted with power and light. Long driveway providing ample vehicular parking, accessed via security gates.





Newton Mearns is one of the most sought-after suburbs within the south side of Glasgow. The property is superbly situated for a wide range of amenities and indeed nationally recognised schooling. The property is a short distance away from excellent shopping at The Avenue at Mearns Cross and Greenlaw Village. There are an abundance of sports and recreational facilities found within the district which include excellent golf courses, parks, tennis clubs and there are a variety of country pursuits. Local train stations include Whitecraigs Station and Patterton Station.

NM4191 | Sat Nav: 6 Hazelwood Avenue, Newton Mearns, G77 5PT

For the full home report visit www.corumproperty.co.uk

* All measurements and distances are approximate Floorplans are for illustration purposes and may not be to scale.



WE'RE **SOLD** ON
YOUR FUTURE



Corum Newton Mearns
134 Ayr Road, Newton Mearns, G77 6EG

Tel: 0141 639 5888

Email: n.mearns@corumproperty.co.uk

www.corumproperty.co.uk